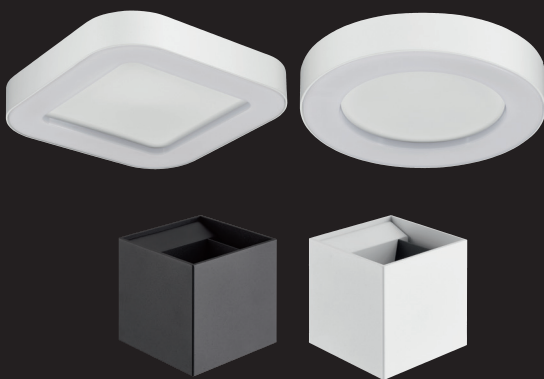




## Velite

A range of sleek and stylish outdoor luminaires



The new **Velite** range is a sleek and stylish range of outdoor luminaires. **Velite** is perfect for lighting gardens, courtyards and exterior entrances.

**Velite** consists of wall mounted fixtures: square and round - with or without an integrated sensor; an adjustable direct/indirect wall mounted luminaire in 2 colours; as well as an L shaped wall

mounted luminaire and 2 sizes of L shaped bollards.

**Velite** not only delivers high performance: up to 830lm (luminaire lumen output on square and round wall mounted luminaire); but also high efficiency: up to 71lm/W (total system efficiency on Velite L range).

## Velite

### A range of sleek and stylish outdoor luminaires

#### FEATURES:

- Velite is perfect for lighting courtyards, gardens and exterior entrances
- Design meets IK05 requirements
- Various shapes of die cast aluminium wall mounted luminaires
- Available with or without an integrated sensor
- High efficient thermal design: ta -20°C to +45°C
- High performance: delivers up to 830 lm (luminaire lumen output), and up to 69lm/W (total system efficiency)
- Available in warm white (3,000K)
- Energy class: A++, A+, A
- Lifetime: 25,000 hours life at 70% of the original output L70

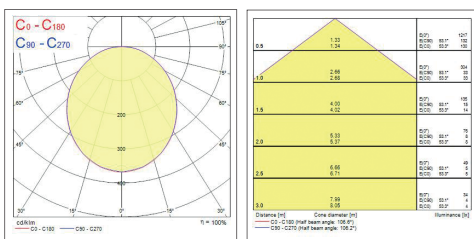


Item code	Description	Driver	Body colour	Colour Temperature (K)	Energy Class	Voltage (V)	Drive current (mA)	System power consumption (W)	Lumen output (lm)	Efficacy (lm/W)	Lifetime (H)	Weight (Kg)
<b>Wall Light</b>												
0047815	VELITE WALL ROUND WH 3000K	Electronic	RAL9016	3000	A++, A+, A	220-240	300	12	830	69	25,000	0.9
0047816	VELITE WALL SQUARE WH 3000K	Electronic	RAL9016	3000	A++, A+, A	220-240	300	13	830	64	25,000	1.05
0047817	VELITE WALL ROUND SENSOR WH 3000K	Electronic	RAL9016	3000	A++, A+, A	220-240	300	12	830	69	25,000	0.88
0047818	VELITE WALL SQUARE SENSOR WH 3000K	Electronic	RAL9016	3000	A++, A+, A	220-240	300	13	830	64	25,000	1.02

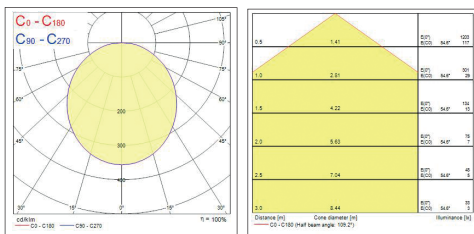
Legend: 3000K = 3,000K Warm White; WH = White

#### Photometric data

##### Wall - Square

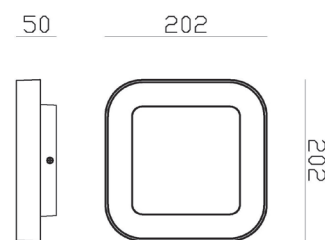


##### Wall - Round

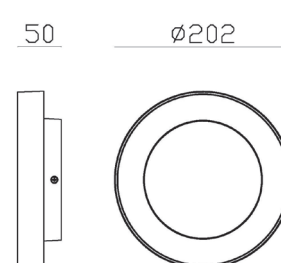


#### Dimensions (mm)

##### Wall - Square



##### Wall - Round





## Velite

### A range of sleek and stylish outdoor luminaires

#### FEATURES:

- Velite is perfect for lighting courtyards, gardens and exterior entrances
- Design meets IK05 requirements
- Various shapes, sizes and colours of die cast aluminium wall mounted luminaires
- Range includes bollards and various wall mounted direct and direct/indirect luminaires
- High efficient thermal design: ta -20°C to +45°C
- High performance: delivers up to 570 lm (luminaire lumen output), and up to 71lm/W (total system efficiency)
- Available in warm white (3,000K)
- Energy class: A++, A+, A
- Lifetime: 25,000 hours life at 70% of the original output L70

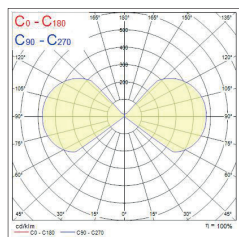


Item code	Description	Driver	Body colour	Colour Temperature (K)	Energy Class	Voltage (V)	Drive current (mA)	System power consumption (W)	Lumen output (lm)	Efficacy (lm/W)	Lifetime (H)	Weight (Kg)
<b>Adjustable up and down wall light</b>												
0047813	VELITE WALL ADJUST BK UP AND DOWN 3000K	Electronic	RAL9005	3000	A++, A+, A	220-240	700	5	290	58	25,000	0.787
0047814	VELITE WALL ADJUST WH UP AND DOWN 3000K	Electronic	RAL9016	3000	A++, A+, A	220-240	700	5	290	58	25,000	0.787
<b>L Range</b>												
0047810	VELITE L WALL BK 3000K	Electronic	RAL9005	3000	A++, A+, A	220-240	200	8	570	71	25,000	0.68
0047811	VELITE L BOLLARD 0.5M BK 3000K	Electronic	RAL9005	3000	A++, A+, A	220-240	200	8	570	71	25,000	1.54
0047812	VELITE L BOLLARD 0.8M BK 3000K	Electronic	RAL9005	3000	A++, A+, A	220-240	200	8	570	71	25,000	2.07

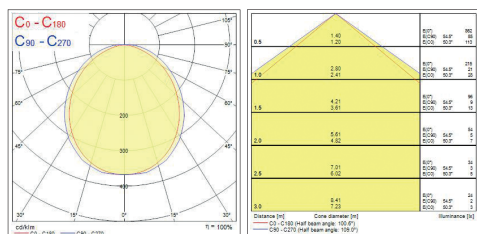
Legend: 3000K = 3,000K Warm White; ADJUST = Adjustable; WH = White; BK = Black

#### Photometric data

##### Adjustable

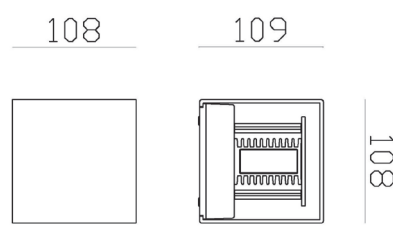


##### L Range

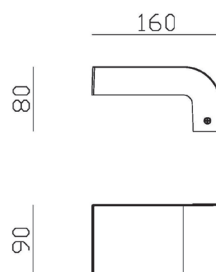


#### Dimensions (mm)

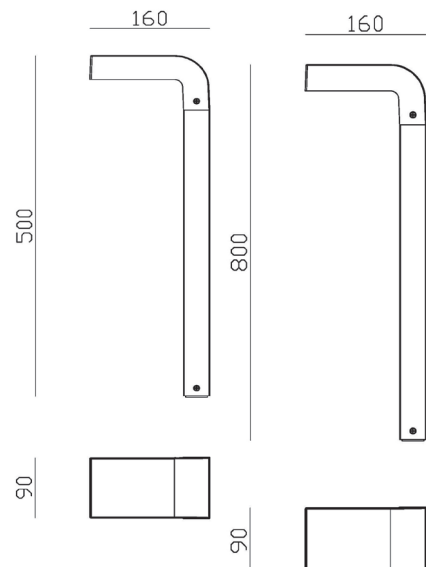
##### Adjustable



##### L Range - Wall



##### L Range - Bollard



## EUROPE

### Head Office

London  
T. +44 (0) 20 7011 9700  
info.eu@feilosylvania.com

### Belgium

Antwerp  
T. +32 (0)3 610 44 44  
F. +32 (0)3 610 44 57  
info.be@feilosylvania.com

### Croatia, Slovenia, BiH, Serbia and Montenegro

Zagreb  
T. +385 98 251969  
info.hr@feilosylvania.com

### Czech Republic and Slovakia

Bratislava  
T. +421 911 236 435  
info.cz@feilosylvania.com

### Estonia, Latvia, Lithuania

Budapest  
T. +36 1 888 0639  
info.bal@feilosylvania.com

### Denmark

Copenhagen  
T. +46 8 556 322 00  
F. +46 8 556 322 10  
info.se@feilosylvania.com

### Finland

Helsinki  
T. +358 (0)9 5421 2100  
info.fi@feilosylvania.com

### France

Paris  
T. +33 (0)1 55 51 11 00  
F. +33 (0)1 55 51 11 08  
info.fr@feilosylvania.com

### Germany and Austria

Erlangen  
T. +49 9131 793 0  
F. +49 9131 793 345  
info.de@feilosylvania.com

### Greece

Athens  
T. +30 210 996 65 61  
F. +30 210 996 90 29  
info.gr@feilosylvania.com

### Hungary

Budapest  
T. +36 1 888 0639  
info.hu@feilosylvania.com

### Italy

Milan  
T. +39 02 24 12 58 11  
F. +39 02 24 12 58 80  
info.it@feilosylvania.com

### Netherlands

Breda  
T. +31 (0)76 750 44 44  
info.nl@feilosylvania.com

### Norway

Oslo  
T. +46 8 556 322 00  
F. +46 8 556 322 10  
info.no@feilosylvania.com

### Poland

Warsaw  
T. +48 728 888 277  
info.pl@feilosylvania.com

### Portugal

Lisbon  
T. +351 21 793 77 36/37  
F. +351 21 793 77 38  
info.pt@feilosylvania.com

### Romania / Bulgaria

Bucharest  
T. +40 (0) 720 724 647  
info.ro@feilosylvania.com

### Russia

Moscow  
T. +7 495 935 70 48  
F. +7 495 937 70 08  
info.ru@feilosylvania.com

### Spain

Madrid  
T. +34 91 669 90 00  
F. +34 91 673 73 64  
info.es@feilosylvania.com

### Sweden

Stockholm  
T. +46 8 556 322 00  
F. +46 8 556 322 10  
info.se@feilosylvania.com

### Switzerland

Zurich  
T. +41 44305 31 80  
F. +41 44305 31 81  
info.ch@feilosylvania.com

### UK

Newhaven  
T. +44 (0) 800 440 2478  
F. +44 (0) 1273 512688  
info.uk@feilosylvania.com

## MIDDLE EAST

### United Arab Emirates

Dubai  
T. +971 4 2998141  
F. +971 4 2998142  
info.ae@feilosylvania.com

## AFRICA

### South Africa

Johannesburg  
T. +27 (0)11 462 0251  
F. +27 (0)11 462 7399  
sales.sa@feilosylvania.com

## ASIA

### China

Guangzhou  
T. +86 20 3815 1138  
F. +86 20 3869 7572  
info.cn@feilosylvania.com

### Malaysia

Kuala Lumpur  
T. +603 2031 8788  
F. +603 2031 4788  
info.my@feilosylvania.com

### Vietnam

Hanoi  
T. +844 37 151 604  
F. +844 37 151 605  
info.vn@feilosylvania.com

## AMERICAS

### Argentina, Bolivia, Chile, Paraguay, Peru, Uruguay

Buenos Aires  
T. +54 11 4546 4200  
F. +54 11 4546 4228  
info.ar@feilosylvania.com

### Caribbean

### Honduras, Nicaragua

San José  
T. +506 22 107 678  
F. +506 22 328 723  
info.cr@feilosylvania.com

### Colombia

Santafé de Bogotá  
T. +57 1 782 5200  
F. +57 1 719 9621  
info.co@feilosylvania.com

### Costa Rica

T. +506 22 107 678  
F. +506 22 200 338  
info.cr@feilosylvania.com

### Ecuador

Quito  
T. +593 2 281 0773  
F. +593 2 281 0007  
info.ec@feilosylvania.com

### El Salvador

San Salvador  
T. +503 2239 2239  
F. +503 2284 9670  
info.sv@feilosylvania.com

### Guatemala

Guatemala City  
T. +502 2387 5300  
F. +502 2387 5301  
info.gt@feilosylvania.com

### Mexico

Mexico D.F.  
T. +52 55 4627 5500  
F. +52 55 5387 7671  
marketing@feilo-sli.com.mx

### Panama

Panama City  
T. +507 236 1000  
F. +507 236 1315  
info.pa@feilosylvania.com

### Venezuela

Caracas  
T. +58 212 381 0452  
F. +58 212 381 0350  
info.ve@feilosylvania.com

Although every effort is made to ensure accuracy in the compilation of the technical detail within this publication, specifications and performance data are constantly changing. Current details should therefore be checked with Feilo Sylvania Europe Ltd.