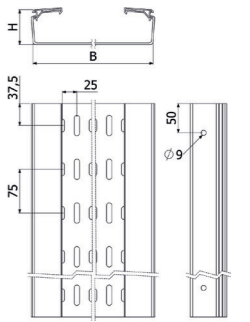


BASORPLAST BPE-P / H60



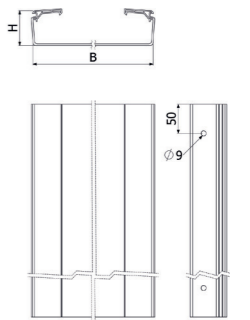
| 3m (10ft) | mm | | inch | | PVC UVM1 |
|------------|----|--------|------|------|----------|
| | mm | inch | mm | inch | |
| BPE 60X100 | 60 | 2 3/8" | 100 | 4" | 210070 |
| BPE 60X150 | 60 | 2 3/8" | 150 | 6" | 210071 |
| BPE 60X200 | 60 | 2 3/8" | 200 | 8" | 210072 |
| BPE 60X300 | 60 | 2 3/8" | 300 | 12" | 210073 |



BASORPLAST BPE-C / H60



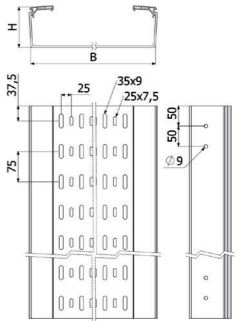
| 3m (10ft) | mm | | inch | | PVC UVM1 |
|--------------|----|--------|------|------|----------|
| | mm | inch | mm | inch | |
| BPE-C 60X100 | 60 | 2 3/8" | 100 | 4" | 210062 |
| BPE-C 60X150 | 60 | 2 3/8" | 150 | 6" | 210063 |
| BPE-C 60X200 | 60 | 2 3/8" | 200 | 8" | 210064 |
| BPE-C 60X300 | 60 | 2 3/8" | 300 | 12" | 210065 |



BASORPLAST BPE-P / H100



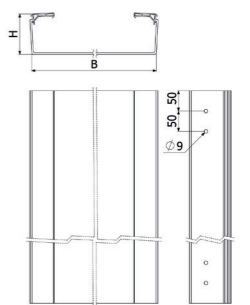
| 3m (10ft) | mm | | inch | | PVC UVM1 |
|-------------|-----|------|------|------|----------|
| | mm | inch | mm | inch | |
| BPE 100X200 | 100 | 4" | 200 | 8" | 210074 |
| BPE 100X300 | 100 | 4" | 300 | 12" | 210075 |
| BPE 100X400 | 100 | 4" | 400 | 16" | 210076 |
| BPE 100X600 | 100 | 4" | 600 | 24" | 210077 |



BASORPLAST BPE-C / H100



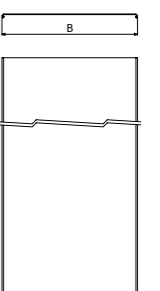
| 3m (10ft) | mm | | inch | | PVC UVM1 |
|---------------|-----|------|------|------|----------|
| | mm | inch | mm | inch | |
| BPE-C 100X200 | 100 | 4" | 200 | 8" | 210066 |
| BPE-C 100X300 | 100 | 4" | 300 | 12" | 210067 |
| BPE-C 100X400 | 100 | 4" | 400 | 16" | 210068 |
| BPE-C 100X600 | 100 | 4" | 600 | 24" | 210069 |



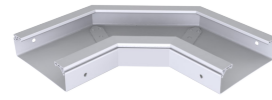
COVER - TAPA TBPE



| 3m (10ft) | mm | | inch | | PVC UVM1 |
|-----------|-----|------|------|------|----------|
| | mm | inch | mm | inch | |
| TBPE 100 | 100 | 4" | | | 210078 |
| TBPE 150 | 150 | 6" | | | 210079 |
| TBPE 200 | 200 | 8" | | | 210080 |
| TBPE 300 | 300 | 12" | | | 210081 |
| TBPE 400 | 400 | 16" | | | 210082 |
| TBPE 600 | 600 | 24" | | | 210083 |

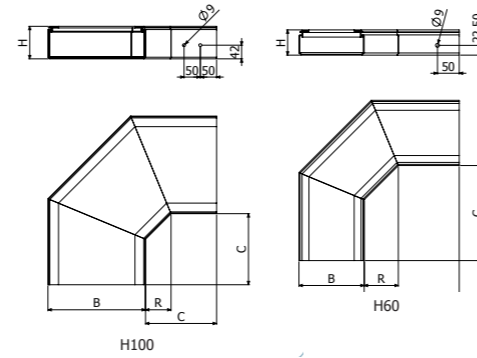


BEND-CURVA CPBPE 90°



| CPBPE | mm | | inch | | PVC UVM1 |
|---------------|-----|--------|------|------|----------|
| | mm | inch | mm | inch | |
| CPBPE 60X100 | 60 | 2 3/8" | 100 | 4" | 210089 |
| CPBPE 60X150 | 60 | 2 3/8" | 150 | 6" | 210090 |
| CPBPE 60X200 | 60 | 2 3/8" | 200 | 8" | 210091 |
| CPBPE 60X300 | 60 | 2 3/8" | 300 | 12" | 210092 |
| CPBPE 100X200 | 100 | 4" | 200 | 8" | 210093 |
| CPBPE 100X300 | 100 | 4" | 300 | 12" | 210094 |
| CPBPE 100X400 | 100 | 4" | 400 | 16" | 210095 |
| CPBPE 100X600 | 100 | 4" | 600 | 24" | 210096 |

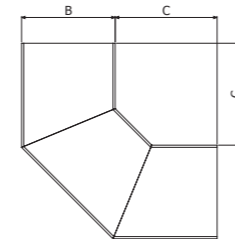
2x +4/8



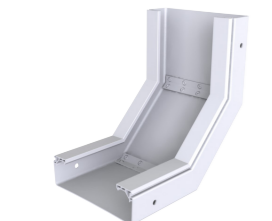
COVER-TAPA TCPBPE 90°



| TCPBPE | B | | C | | PVC UVM1 |
|------------|-----|------|-----|--------|----------|
| | mm | inch | mm | inch | |
| TCPBPE 100 | 100 | 4" | 220 | 8 1/2" | 210097 |
| TCPBPE 150 | 150 | 6" | 220 | 8 1/2" | 210098 |
| TCPBPE 200 | 200 | 8" | 220 | 8 1/2" | 210099 |
| TCPBPE 300 | 300 | 12" | 220 | 8 1/2" | 210100 |
| TCPBPE 400 | 400 | 16" | 220 | 8 1/2" | 210101 |
| TCPBPE 600 | 600 | 24" | 240 | 9 1/2" | 210102 |

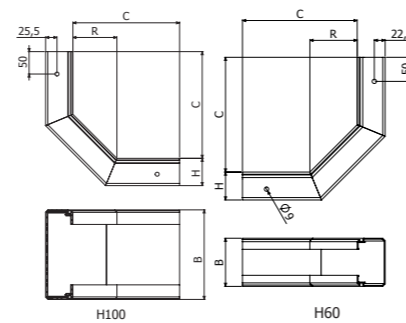


BEND-CURVA CCBPE



| CCBPE | mm | | inch | | PVC UVM1 |
|---------------|-----|--------|------|------|----------|
| | mm | inch | mm | inch | |
| CCBPE 60X100 | 60 | 2 3/8" | 100 | 4" | 210103 |
| CCBPE 60X150 | 60 | 2 3/8" | 150 | 6" | 210104 |
| CCBPE 60X200 | 60 | 2 3/8" | 200 | 8" | 210105 |
| CCBPE 60X300 | 60 | 2 3/8" | 300 | 12" | 210106 |
| CCBPE 100X200 | 100 | 4" | 200 | 8" | 210107 |
| CCBPE 100X300 | 100 | 4" | 300 | 12" | 210108 |
| CCBPE 100X400 | 100 | 4" | 400 | 16" | 210109 |
| CCBPE 100X600 | 100 | 4" | 600 | 24" | 210110 |

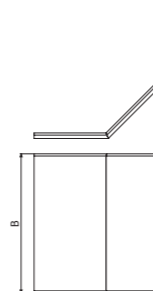
2x +4/8



COVER-TAPA TCCBPE



| TCCBPE | B | | PVC UVM1 |
|----------------|-----|------|----------|
| | mm | inch | |
| TCCBPE 60X100 | 100 | 4" | 210111 |
| TCCBPE 60X150 | 150 | 6" | 210112 |
| TCCBPE 60X200 | 200 | 8" | 210113 |
| TCCBPE 60X300 | 300 | 12" | 210114 |
| TCCBPE 100X200 | 200 | 16" | 210115 |
| TCCBPE 100X300 | 300 | 12" | 210116 |
| TCCBPE 100X400 | 400 | 16" | 210117 |
| TCCBPE 100X600 | 600 | 24" | 210118 |

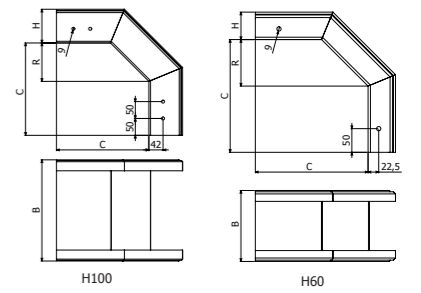


BEND-CURVA CXBPE



| CXBPE | mm | | inch | | PVC UVM1 |
|---------------|-----|--------|------|------|----------|
| | mm | inch | mm | inch | |
| CXBPE 60X100 | 60 | 2 3/8" | 100 | 4" | 210119 |
| CXBPE 60X150 | 60 | 2 3/8" | 150 | 6" | 210120 |
| CXBPE 60X200 | 60 | 2 3/8" | 200 | 8" | 210121 |
| CXBPE 60X300 | 60 | 2 3/8" | 300 | 12" | 210122 |
| CXBPE 100X200 | 100 | 4" | 200 | 8" | 210123 |
| CXBPE 100X300 | 100 | 4" | 300 | 12" | 210124 |
| CXBPE 100X400 | 100 | 4" | 400 | 16" | 210125 |
| CXBPE 100X600 | 100 | 4" | 600 | 24" | 210126 |

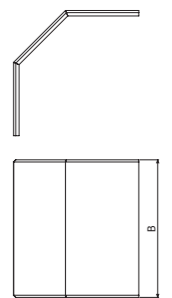
2x +4/8



COVER-TAPA TCXBPE



| TCXBPE | B | | PVC UVM1 |
|----------------|-----|------|----------|
| | mm | inch | |
| TCXBPE 60X100 | 100 | 4" | 210127 |
| TCXBPE 60X150 | 150 | 6" | 210128 |
| TCXBPE 60X200 | 200 | 8" | 210129 |
| TCXBPE 60X300 | 300 | 12" | 210130 |
| TCXBPE 100X200 | 200 | 16" | 210131 |
| TCXBPE 100X300 | 300 | 12" | 210132 |
| TCXBPE 100X400 | 400 | 16" | 210133 |
| TCXBPE 100X600 | 600 | 24" | 210134 |

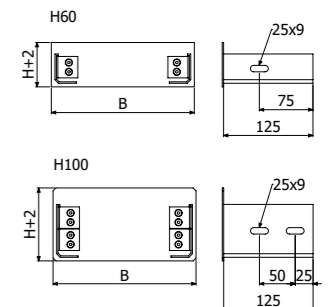


END COVER TFBPE



| TFBPE | mm | | inch | | PVC UVM1 |
|---------------|-----|--------|------|------|----------|
| | mm | inch | mm | inch | |
| TFBPE 60X100 | 60 | 2 3/8" | 100 | 4" | 223023 |
| TFBPE 60X150 | 60 | 2 3/8" | 150 | 6" | 223024 |
| TFBPE 60X200 | 60 | 2 3/8" | 200 | 8" | 223025 |
| TFBPE 60X300 | 60 | 2 3/8" | 300 | 12" | 223026 |
| TFBPE 100X200 | 100 | 4" | 200 | 8" | 223027 |
| TFBPE 100X300 | 100 | 4" | 300 | 12" | 223028 |
| TFBPE 100X400 | 100 | 4" | 400 | 16" | 223029 |
| TFBPE 100X600 | 100 | 4" | 600 | 24" | 223030 |

2/4

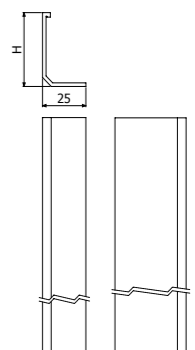


DIVIDER PSBPE



| PSBPE | H | | PVC UVM1 |
|------------|-----|--------|----------|
| | mm | inch | |
| PSBPE 60 | 60 | 2 3/8" | 210144 |
| TPSBPE 100 | 100 | 4" | 210145 |

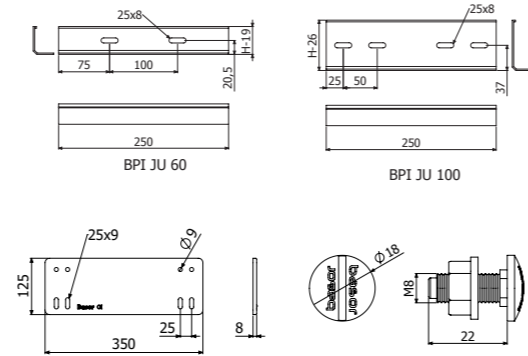
4



UNION JUBPE



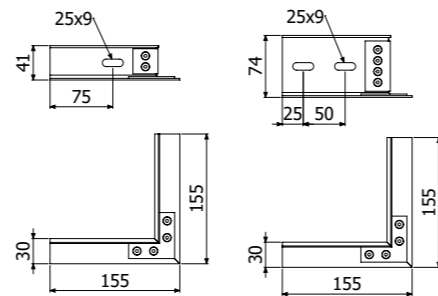
| JUBPE | mm | inch | PVC UVM1 |
|-----------------|-----|--------|----------|
| JUBPE 60 | 60 | 2 3/8" | 210084 |
| JUBPE 100 | 100 | 4" | 210085 |
| JUBPE-C 400-600 | - | - | 218797 |
| CTBP | - | - | 210017 |



DERIVATION PDBPE



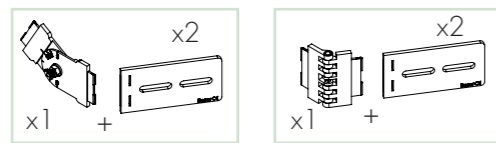
| PDBPE | PVC UVM1 |
|-------------------|----------|
| PDBPE 60 (2 3/8") | 223021 |
| PDBPE 100 (4") | 223022 |



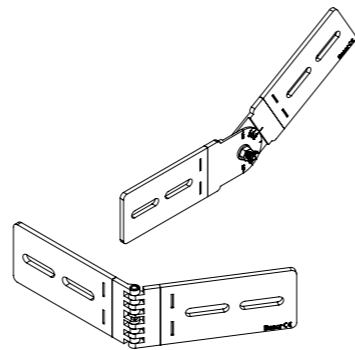
ARTICULATED JUBPE-AB



| JUBPE-AB | mm | inch | PVC UVM1 |
|--------------|-----|--------|----------|
| JUBPE-AB 60 | 60 | 2 3/8" | 223613 |
| JUBPE-AB 100 | 100 | 4" | 223614 |



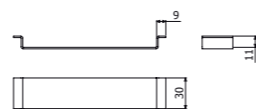
H60 H100



CLAMP BIK10-BPE



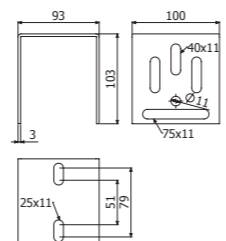
| BIK10-BPE | e mm | Mod HxB | PVC UVM1 | |
|----------------------|---------|------------|----------|--------|
| | | | 304 | 316 |
| BIK10-BPE 60X100 | 1.5 | 60x100 | 217340 | 217347 |
| BIK10-BPE 60X150 | 1.5 | 60x150 | 217341 | 217348 |
| BIK10-BPE 60/100X200 | 1.5 | 60/100x200 | 217342 | 217349 |
| BIK10-BPE 60/100X300 | 1.5 | 60/100x300 | 217343 | 217350 |
| BIK10-BPE 100X400 | 2 | 100x400 | 217345 | 217352 |
| BIK10-BPE 100X600 | 2 | 100x600 | 217346 | 217353 |



HEAD - KSHGR



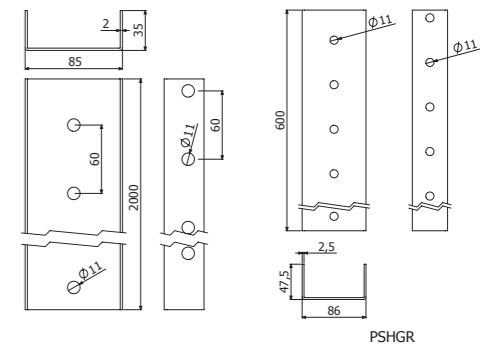
| KSHGR | PVC UVM1 |
|-------|----------|
| KSHGR | 217282 |



U-PROFILE PSHG-PSHGR



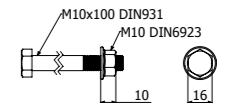
| PSHG-PSHGR | PVC UVM1 |
|------------|----------|
| PSHG 2M | 217281 |
| PSHGR 600 | 217283 |
| TFSHGR PVC | 212112 |



SCREW CT2



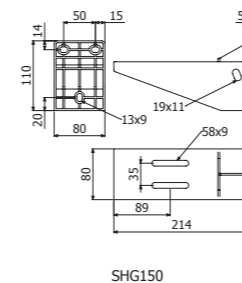
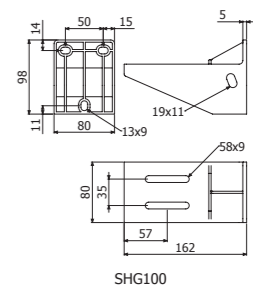
| CT2 | PVC UVM1 |
|-------------|----------|
| CT2 M10X100 | 207228 |



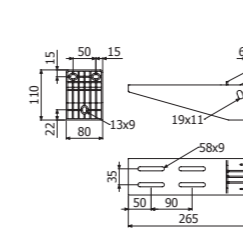
WALL SUPPORT SHG



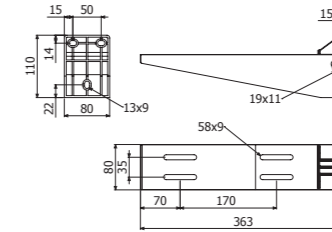
| SHG | mm | | PVC UVM1 |
|---------|-----|------|----------|
| | mm | inch | |
| SHG 100 | 100 | 4" | 210011 |
| SHG 150 | 150 | 6" | 210012 |
| SHG 200 | 200 | 8" | 210013 |
| SHG 300 | 300 | 12" | 210014 |
| SHG 400 | 400 | 16" | 210015 |
| SHG 600 | 600 | 24" | 210016 |



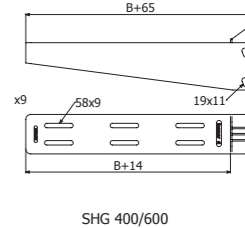
SHG150



SHG200

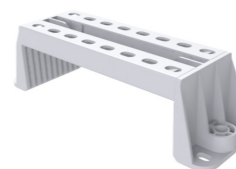


SHG300

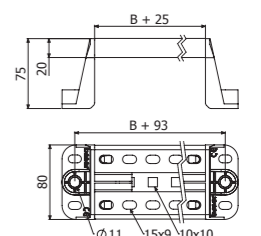


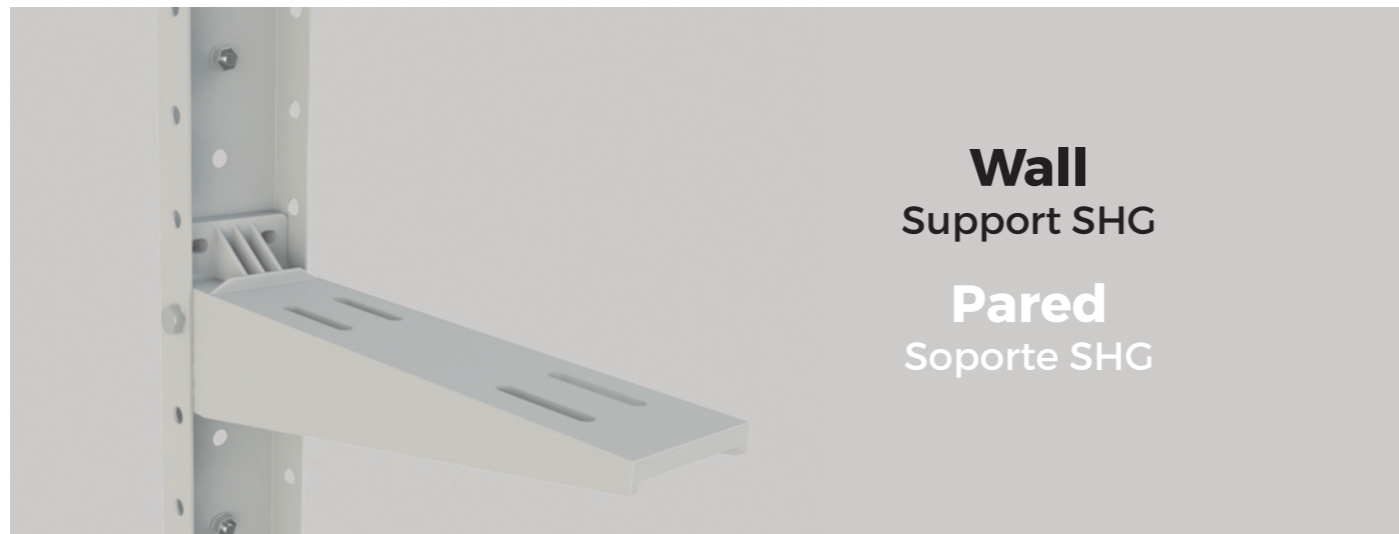
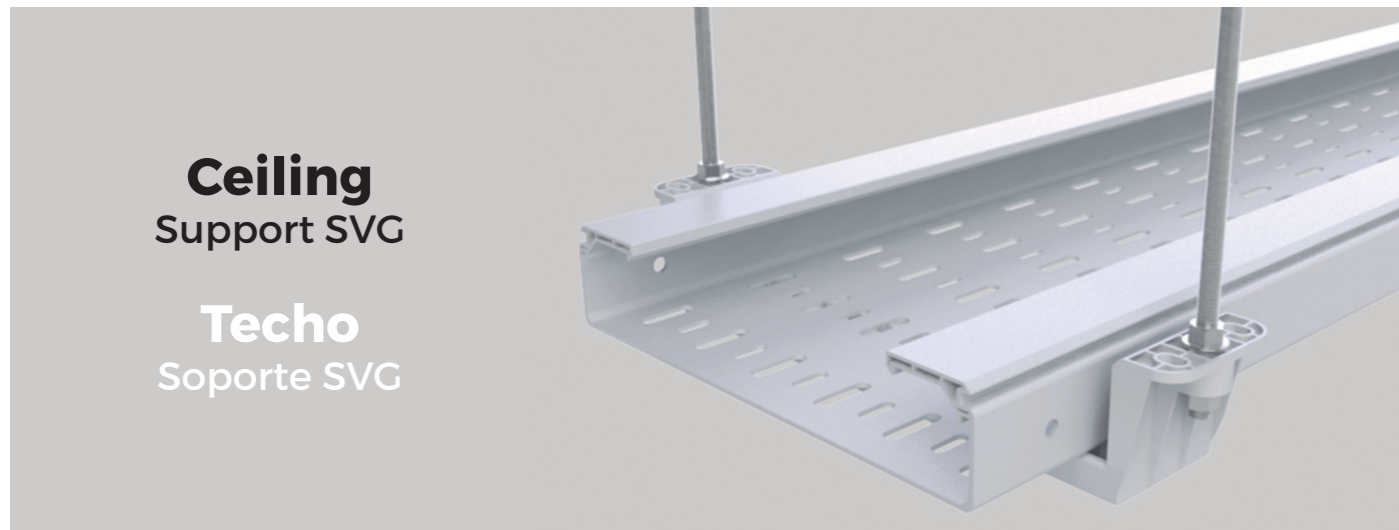
SHG 400/600

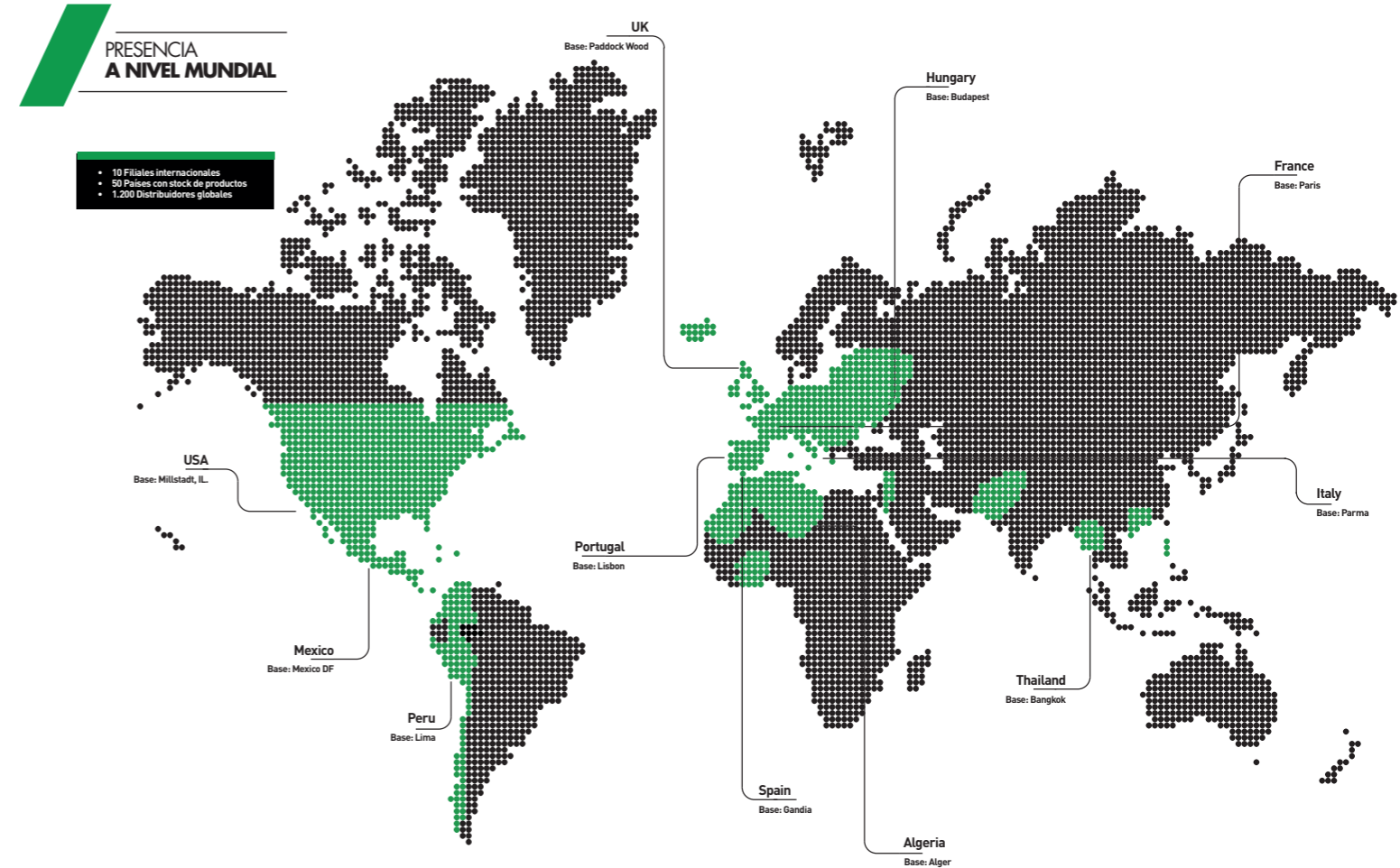
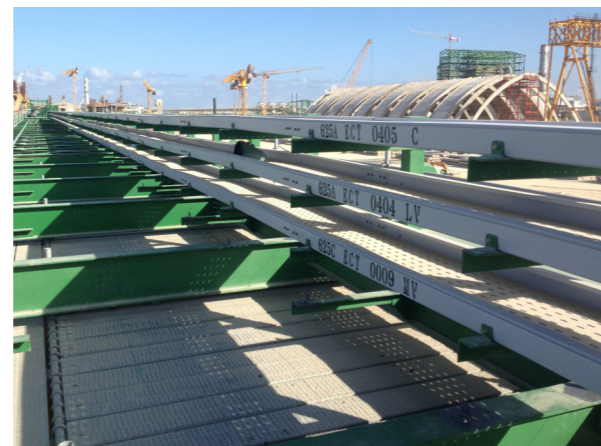
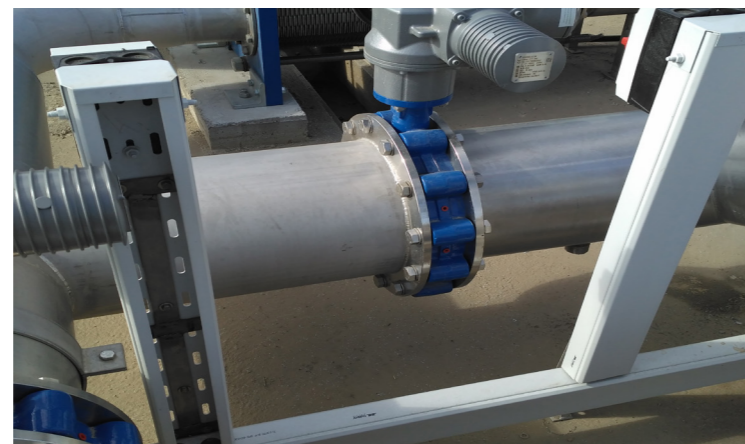
FLOOR SUPPORT SVG



| SVG | mm | | PVC UVM1 |
|---------|-----|------|----------|
| | mm | inch | |
| SVG 100 | 100 | 4" | 210050 |
| SVG 150 | 150 | 6" | 210051 |
| SVG 200 | 200 | 8" | 210052 |
| SVG 300 | 300 | 12" | 210053 |
| SVG 400 | 400 | 16" | 210054 |
| SVG 600 | 600 | 24" | 210055 |



Application on brackets
Aplicación en soporte**Floor**
Support SVG**Suelo**
Soporte SVG**Wall**
Support SHG**Pared**
Soporte SHG**Ceiling**
Support SVG**Techo**
Soporte SVG Notes/Notas



SPAIN HEADQUARTERS

Avenida Alcodar 45-47
46701 Gandia SPAIN
T. +34.962.876.695
basor@basor.com

PERU Basor Perú S.A.C

Calle Venancio Ávila 1988
Lima (Perú)
T. +51.1.759.8367
peru@basor.com

USA Basor Electric Inc.

604 Mulberry Street Millstadt
Illinois 62260, USA
T. 844 393 3985
customer.service@basor.com

ITALY Basor Electric SRL

Via B. Franklin, 31
43122 Parma
T. +39.0521.798.360
commerciale@basor.com

MEXICO Basor México SAPI

Carretera México-Cuautitlán km31.5 - b.33
54800, Cuautitlán, Edo. México, MX
T. +52.55.5546.9092
atencionmx@basor.com

THAILAND Basor THAI

166/26 soi Charoenporn Charansani-
twong rd., Baanchanglor
Bangkoknoi, Bangkok 10500
T. +66 0 2 9152300

HUNGARY Basor Elektro KFT

Grassalkovic U.255
H-1239 Budapest
T. +361.297.0204
basorelektro@basor.com

FRANCE Basor France

200 Chaussée Jules César Bat
A4 95250, BEAUCHAMP (France)
T. +33 01 3978 4982
basorelectric@basor.com

PORTUGAL Basor Caminho de Cabos

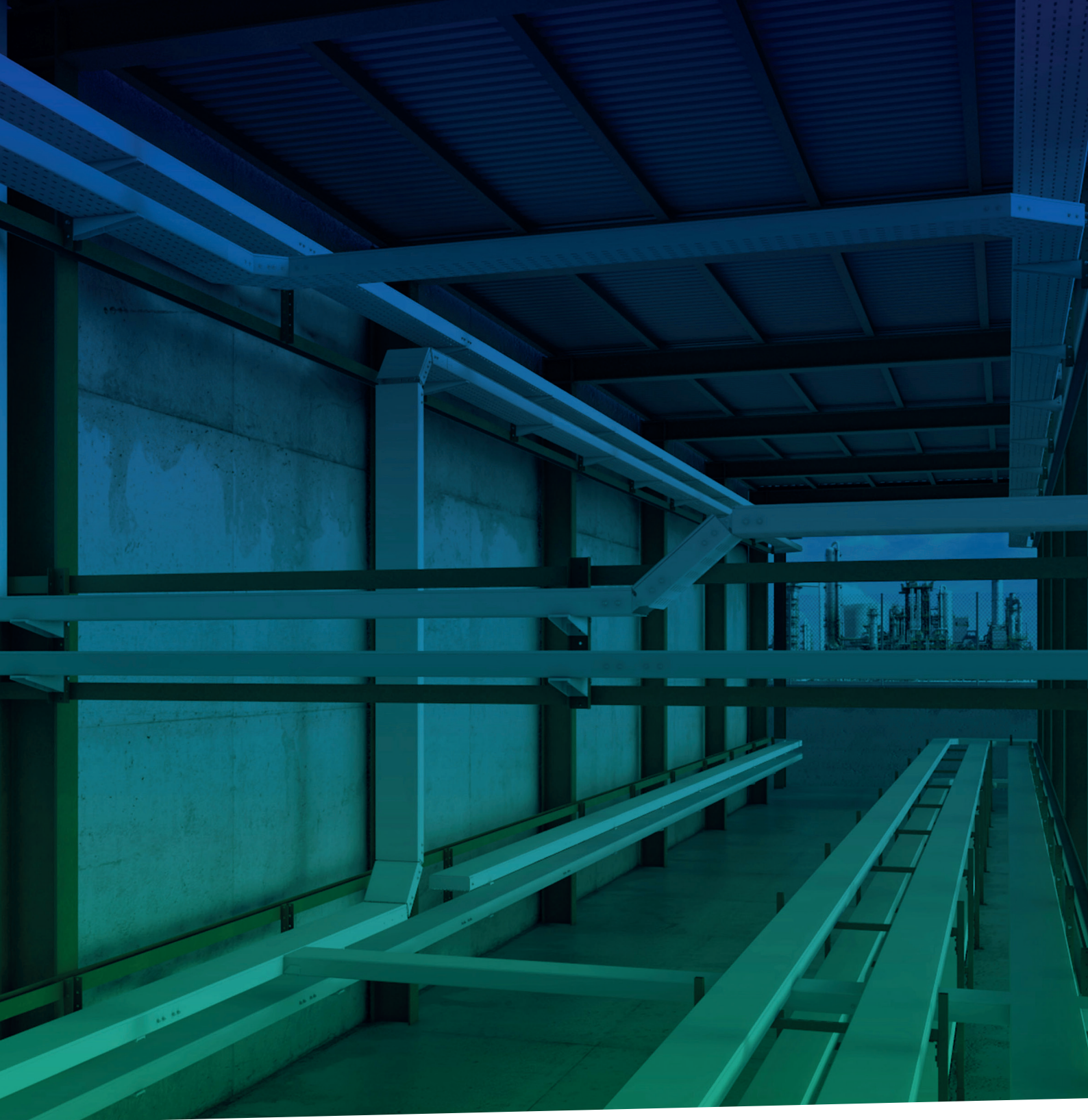
Parque Empresarial Quimiparque
Edif. 153, rua nº42, 21
2830 Barreiro (Lisboa)
T. +351.21.2071.165
armazem@basor.com

ARGELIA Basor SARL M.N.A Equipis

28, Avenue Colonel Bougara
Velle-vue, El-Harrach
T. +213.2152.6234
algerie@basor.com

UNITED KINGDOM Basor Electric LTD

Unit 23, Eldon Way Industrial Estate
Paddock Wod, TN12 6BE, Kent
T. +44.1892.833.500
basoruk@basor.com



BE Basor

CABLE TRAY SPECIALIST



Basor Electric SA



@Basorelectric



/Basorelectric



www.basor.com