



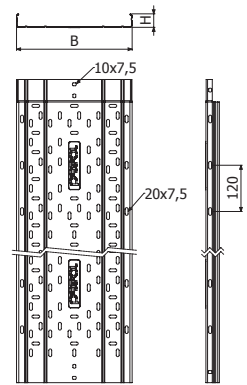
ERE H35



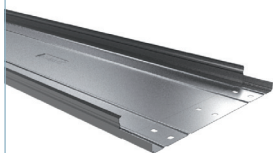
L = 3 m (10 ft)

	B		H		GS		GC		i	i
	mm	inch	mm	inch	REF.	kg/m	REF.	kg/m		
ERE 100X35	100	4"	35	1 3/8"	2/1192	0,74	2/1222	1,10	3	3
ERE 150X35	150	6"	35	1 3/8"	2/1193	0,95	2/1223	1,42	0	1
ERE 200X35	200	8"	35	1 3/8"	2/1194	1,12	2/1224	1,67	4	6
ERE 300X35	300	12"	35	1 3/8"	2/1195	1,64	2/1225	2,24		

4/100 x B1 - (2/4356-EZ // 2/6826-GC // 2/4925-i304)



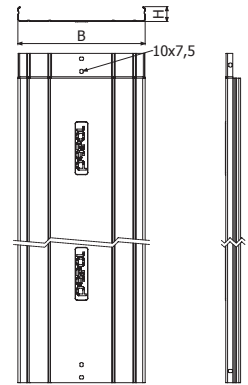
ERE-C H35



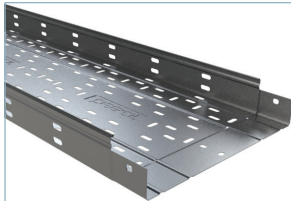
L = 3 m (10 ft)

	B		H		GS		GC		i	i
	mm	inch	mm	inch	REF.	kg/m	REF.	kg/m		
ERE-C 100X35	100	4"	35	1 3/8"	2/1252	0,76	2/1282	1,14	3	3
ERE-C 150X35	150	6"	35	1 3/8"	2/1253	0,98	2/1283	1,46	0	1
ERE-C 200X35	200	8"	35	1 3/8"	2/1254	1,20	2/1284	1,78	4	6
ERE-C 300X35	300	12"	35	1 3/8"	2/1255	1,77	2/1285	2,42		

4/100 x B1 - (2/4356-EZ // 2/6826-GC // 2/4925-i304)



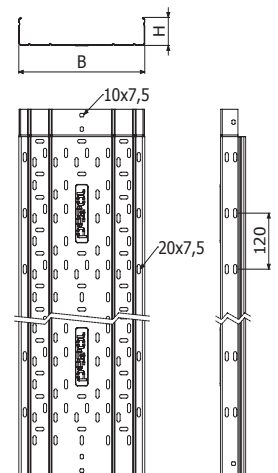
ERE H60



L = 3 m (10 ft)

	B		H		GS		GC		i304	
	mm	inch	mm	inch	REF.	kg/m	REF.	kg/m	REF.	kg/m
ERE 100X60	100	4"	60	2 3/8"	2/1197	0,95	2/1227	1,42	2/4795	1,25
ERE 150X60	150	6"	60	2 3/8"	2/1198	1,17	2/1228	1,35	2/4319	1,53
ERE 200X60	200	8"	60	2 3/8"	2/1199	1,46	2/1229	1,99	2/4688	1,80
ERE 300X60	300	12"	60	2 3/8"	2/1201	2,03	2/1231	2,56	2/4317	2,69
ERE 400X60	400	16"	60	2 3/8"	2/1202	2,86	2/1232	3,54	2/4933	3,37
ERE 500X60	500	20"	60	2 3/8"	2/1203	3,38	2/1233	4,19	2/5030	4,05
ERE 600X60	600	24"	60	2 3/8"	2/1204	3,91	2/1234	4,83	2/4373	4,65

4/100 x B1 - (2/4356-EZ // 2/6826-GC // 2/4925 - i304)





ERE-C H60

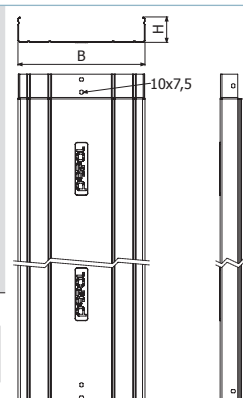


L = 3 m (10 ft)

	B		H		GS		GC		i304	
	mm	inch	mm	inch	REF.	kg/m	REF.	kg/m	REF.	kg/m
ERE-C 100X60	100	4"	60	2 3/8"	2/1257	0,98	2/1287	1,46	2/4907	0,92
ERE-C 150X60	150	6"	60	2 3/8"	2/1258	1,20	2/1288	1,78	2/5028	1,13
ERE-C 200X60	200	8"	60	2 3/8"	2/1259	1,54	2/1289	2,10	2/5029	2,11
ERE-C 300X60	300	12"	60	2 3/8"	2/1261	2,18	2/1291	2,75	2/4306	3,37
ERE-C 400X60	400	16"	60	2 3/8"	2/1262	3,10	2/1292	3,84	2/5196	3,65
ERE-C 500X60	500	20"	60	2 3/8"	2/1263	3,69	2/1293	4,57	2/18555	4,05
ERE-C 600X60	600	24"	60	2 3/8"	2/1264	4,28	2/1294	5,30	2/5197	4,65



4/100 x B1 - (2/4356 - EZ // 2/6826 - GC // 2/4925 - i304)



ERE H80

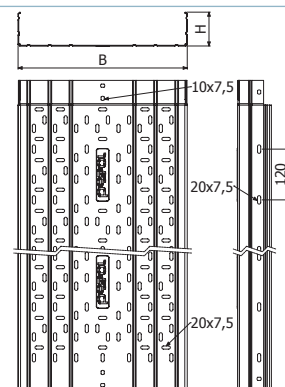


L = 3 m (10 ft)

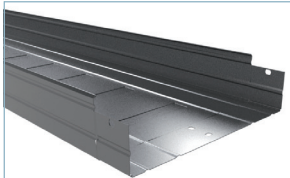
	B		H		GS		GC		i	i
	mm	inch	mm	inch	REF.	kg/m	REF.	kg/m		
ERE 100X80	100	4"	80	3 1/7"	2/1205	1,12	2/1235	1,68	304	316
ERE 150X80	150	6"	80	3 1/7"	2/1206	1,34	2/1236	2,00		
ERE 200X80	200	8"	80	3 1/7"	2/1207	1,64	2/1237	2,24		
ERE 300X80	300	12"	80	3 1/7"	2/1209	2,23	2/1239	3,19		
ERE 400X80	400	16"	80	3 1/7"	2/1210	3,10	2/1240	3,83		
ERE 500X80	500	20"	80	3 1/7"	2/1211	3,86	2/1241	5,50		
ERE 600X80	600	24"	80	3 1/7"	2/1212	5,52	2/1242	6,29		



4/100 x B1 - (2/4356 - EZ // 2/6826 - GC // 2/4925 - i304)



ERE-C H80

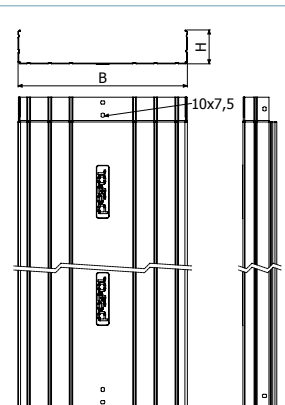


L = 3 m (10 ft)

	B		H		GS		GC		i	i
	mm	inch	mm	inch	REF.	kg/m	REF.	kg/m		
ERE-C 100X80	100	4"	80	3 1/7"	2/1265	1,15	2/1295	1,72	304	316
ERE-C 150X80	150	6"	80	3 1/7"	2/1266	1,37	2/1296	2,03		
ERE-C 200X80	200	8"	80	3 1/7"	2/1267	1,73	2/1297	2,36		
ERE-C 300X80	300	12"	80	3 1/7"	2/1269	2,38	2/1299	3,40		
ERE-C 400X80	400	16"	80	3 1/7"	2/1270	3,34	2/1300	4,13		
ERE-C 500X80	500	20"	80	3 1/7"	2/1271	4,19	2/1301	5,97		
ERE-C 600X80	600	24"	80	3 1/7"	2/1272	6,02	2/1302	6,86		



4/100 x B1 - (2/4356 - EZ // 2/6826 - GC // 2/4925 - i304)



ERE H100



L = 3 m (10 ft)

	B		H		GS		GC		i	i
	mm	inch	mm	inch	REF.	kg/m	REF.	kg/m		
ERE 100X100	100	4"	100	4"	2/1213	1,30	2/1243	1,93	304	316
ERE 150X100	150	6"	100	4"	2/1214	1,51	2/1244	2,25		
ERE 200X100	200	8"	100	4"	2/1215	1,83	2/1245	2,50		
ERE 300X100	300	12"	100	4"	2/1217	2,44	2/1247	3,48		
ERE 400X100	400	16"	100	4"	2/1218	3,33	2/1248	4,13		
ERE 500X100	500	20"	100	4"	2/1219	4,11	2/1249	5,86		
ERE 600X100	600	24"	100	4"	2/1220	5,84	2/1250	6,65		



4/100 x B1 - (2/4356 - EZ // 2/6826 - GC // 2/4925 - i304)

