

MODULAR SOLUTIONS


BasorSUPPORT

 C-PC / KPC / KLPC GS



 PC / KAPC GC



 P41-3S GS



 I8 GC



C-PC



L = 3 m (10 ft)
C-PC



TFPC

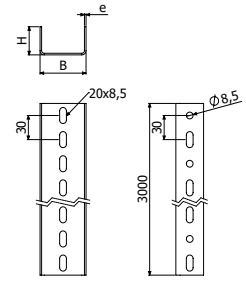
	B		H		L		e	GS	i304	i316
	mm	inch	mm	inch	mm	inch		REF	REF	REF
C-PC 3000	58	2 1/4"	35	1 3/8"	3000	10ft	2	207269	205701	218389

TFPC PVC (214809)

C-PC + KPC --> 2 x CT2 M8X75 (206793 - EZ / 214307 - i304) + 2 x DIN125 M8 (217544-i304)

C-PC + KLPC --> 2/100 x B2 (206792-GC / 205392-i304 / 218443-i316)

C-SR + 2 x CT2 M8X75 (206793-EZ / 214307 - i304)



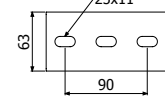
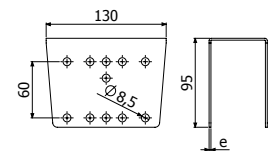
C-PC

KPC



	e	GS	i304	i316
		REF	REF	REF
KPC	2	207270	218390	218391

C-PC ---> KPC: 2 x CT2 M8X75 (206793 - EZ / 214307 - i304) + 2 x DIN125 M8 (217544-i304)



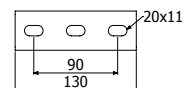
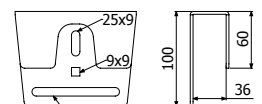
KPC

KLPC



	e	GS	GC	e	i304	i316
		REF	REF		REF	REF
KLPC	3	206786	206787	2	201121	218392

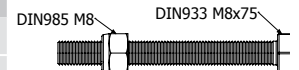
C-PC ---> KLPC: 2/100 x B2 (204926-EZ / 206792-GC / 205392-i304 / 218443-i316)



CT2



	EZ	i304
	REF	REF
CT2 M8X55	210088	
CT2 M8X75	206793	214307



13

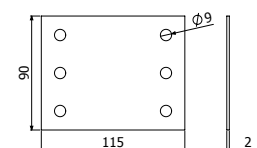
PDPC



	GS
	REF
PDPC	207281

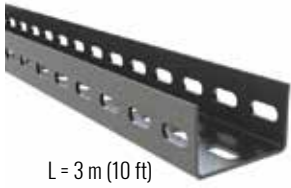
C-PC ---> C-PC: 4 X CT2 M8X75 (206793 - EZ)

C-PC ---> KLPC : 2/100 x B2 (204926 - EZ)



PDPC

PC



L = 3 m (10 ft)



PC+TFPC

	B		H		e	GC
	mm	inch	mm	inch	mm	REF
PC 3000	58	2 1/4"	35	1 3/8"	2	200229

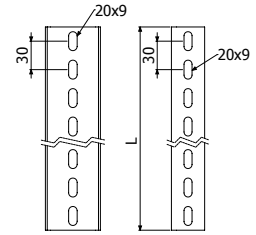
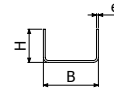
TFPC PVC (214809)

PC + KAPC ---> 2 x CT2 M8X75 (214307 - i304)

C-SR + 2 x CT2 M8X75 (214307 - i304)



TFPC



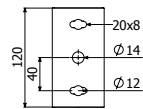
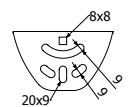
C-PC (GC)

KAPC



	e	GS	GC	i304	i316
	mm	REF	REF	REF	REF
KAPC	2	201116	201117	218063	218393

PC/C-PC + KAPC ---> 2 x CT2 M8X75 (206793 - EZ / 214307 - i304)

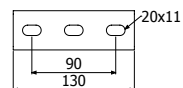
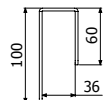
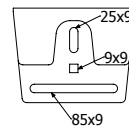


KLPC



	e	GS	GS	e	i304	i316
	mm	REF	REF	mm	REF	REF
KLPC	3	206786	206787	2	201121	218392

C-PC ---> KLPC: 2/100 x B2 (204926-EZ / 206792-GC / 205392-i304 / 218443-i316)



C-SR

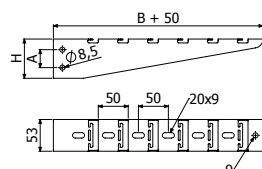


C-SR



	B		e	H		A		SWL		GS	GC	i304	i316
	mm	inch	mm	kg	lb	kg	lb	kg	lb	REF	REF	REF	REF
C-SR 100	100	4"	1,5	67	2 2/3"	30	1 1/6"	102	225	218543	218545	217815	218541
C-SR 150	150	6"	1,5	67	2 2/3"	30	1 1/6"	102	225	218544	218546	217816	218542
C-SR 200	200	8"	1,5	67	2 2/3"	30	1 1/6"	102	225	207264	203460	217817	218409
C-SR 300	300	12"	1,5	67	2 2/3"	30	1 1/6"	90	198	207265	201032	217818	218410
C-SR 400	400	16"	1,5	100	4"	60	2 3/8"	159	351	207266	201033	217819	218411
C-SR 500	500	20"	1,5	100	4"	60	2 3/8"	134	295	207267	201034	217820	218412
C-SR 600	600	24"	1,5	100	4"	60	2 3/8"	117	258	207268	201035	217821	218413

C-SR ---> C-PC: 2 x CT2 M8X75 (206793-EZ / 214307 - i304)





P41-3S 41X41



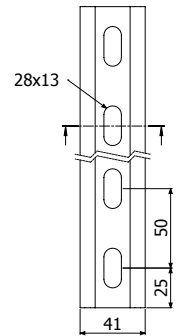
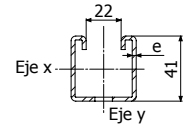
L = 3 m (10 ft)

P41-3S 41X41X2
TF41 PVC (205627)



TF41

e	GS	GC
mm	REF	REF
2	217313	217312

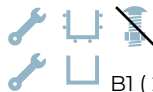
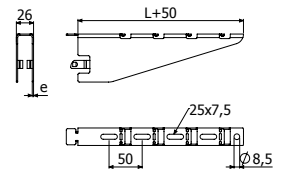


SHST

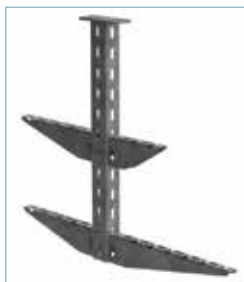
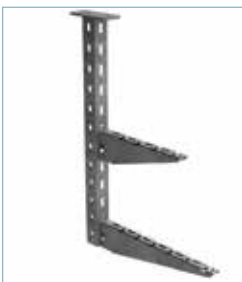


CLICK

	L		e	SWL		GS
	mm	inch		kg	lb	REF
SHST 100	100	4"	1,5	160	352	214489
SHST 150	150	6"	1,5	160	352	214490
SHST 200	200	8"	1,5	146	321	214491
SHST 300	300	12"	2	157	346	214492
SHST 400	400	16"	2	124	273	214493
SHST 500	500	20"	2	111	244	214494
SHST 600	600	24"	2	106	233	214495



B1 (204356-EZ)



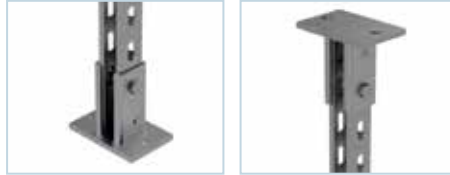


K41-3S

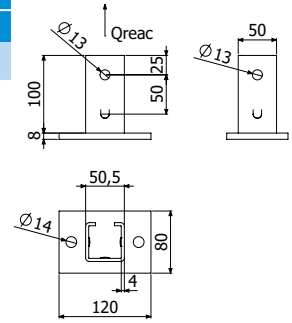


K41-3S

2 x CT2 M10X65 (218704-EZ)



EZ
REF
2118656



SBL41-3S

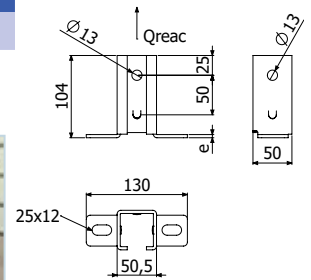


SBL41-3S

2 x CT2 M10X65 (218704-EZ)



e	GS
mm	REF
4	218657



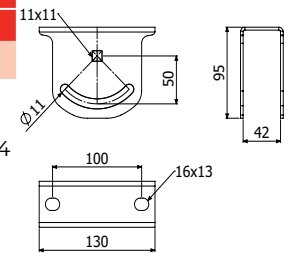
KA41-S



KA41-3S

2/50 x B3 (2/208827-GC / 212096-i304) + DIN933 M10x65 (225505-EZ / 225506-i304) + DIN125 M10 (217561-EZ / 217542-i304) + DIN6023 M10 (225507-EZ / 218802-i304)

e	GS	GC
mm	REF	REF
3	225500	225501



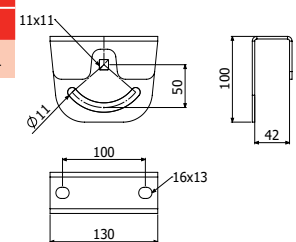
KL41-S



KAL1-3S

2/50 x B3 (2/208827-GC / 212096-i304)

e	GS	GC
mm	REF	REF
3	225503	225504



CT2



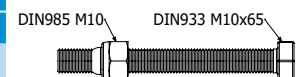
CT2 M8X75

CT2 M10X65

13 CT2 M8X75

17 CT2 M10X65

EZ
REF
206793
218704





18 3M



18 3M

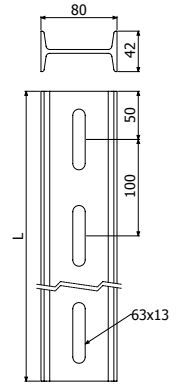
	L		GC
	m	ft	REF
18 3M	3	10	206350

18 3M
TF18 PVC (206947)

18 + K18 + 2/100 x CT1 M10X30 (206320-i304) + 2 x DIN125 M10 (217542-i304 / 218741-i316)



TF18

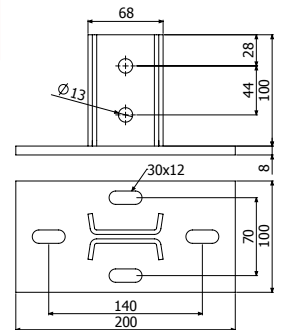


K18



	GC
	REF
K18	206056

K18 + 2/100 x CT1 M10X30 (206320-i304) + 2 x DIN125 M10 (217542-i304 / 218741-i316)

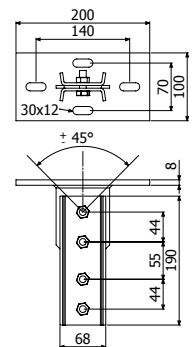


KAI8



	GC
	REF
KAI8	207052

4 x DIN933 M12x35 (218671-i304) + 4 x DIN934 M12 (217604) + 8 x DIN125 M12 (217560-i304)

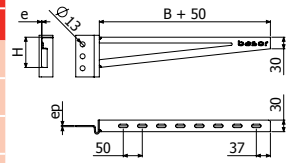




SHV



	H		B		e	ep	GC
	mm	inch	mm	inch			REF
SHV 200	58	2 2/7"	200	8"	2,5	3	206058
SHV 300	68	2 2/3"	300	12"	2,5	3	206271
SHV 400	79	3 1/9"	400	16"	2,5	3	206259
SHV 500	89	3 1/2"	500	20"	2,5	3	206057
SHV 600	100	4"	600	24"	2,5	3	206275
SHV 700	110	4 1/3"	700	28"	2,5	3	206276
SHV 800	120	4 5/7"	800	32"	2,5	3	206277

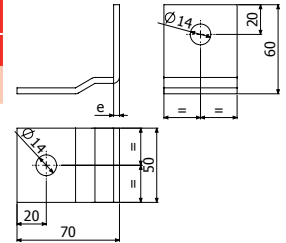


SHV → I8: 2/100 x CT1 M10X30 (206320 - i304)
+ 2 x DIN125 M10 (217542-i304 / 218741-i316)

BI8



GC
REF
206342

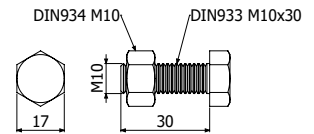


SHV → I8: 2/100 x CT1 M10X30 (206320 - i304)
+ 2 x DIN125 M10 (217542-i304 / 218741-i316)

CT1



EZ	i304
REF	REF
206319	206320



17

C-SHO 400 + C-SHO



SP3S+SHST



SP4+SP4



KPC+C-PC+C-SR



KLPC+C-PC+2xSCR



KAPC+C-PC+2xC-SR



SP4D+SHR



KI8+I8+SHV



BRP+P41 41x21+SP4D+SHR



SZ+SCR



SU+SCR



SU+SHL



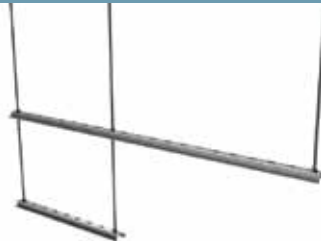
KPC+2xC-PC+4xSRB-N



B18+I8+SHV



C-SVO+VR8



SP4+P41 41x41+4182C



SP4D+SCR



KI8+I8+SHV+TFI8



SP4D+P41 41x41+4182D



SP4D+K82+SHR



KI8+I8+SHV



PC+KAPC+C-SR

