

**SWL kg (lb)**



B mm (inch)

		50 (2")	100 (4")	150 (6")	200 (8")	300 (12")	400 (16")	500 (20")	600 (24")	700 (28")	800 (32")	1000 (40")
C-SHOT	 <b>3 6</b>	-	100 (220)	100 (220)	85 (187)	45 (99)	-	-	-	-	-	-
	<b>9A 9B</b>	-	75 (165)	48 (105)	42 (92)	24 (52)	-	-	-	-	-	-
C-SVO + 2 VR8	 <b>3 6 9A 9B</b>	-	250 (552)	200 (441)	294 (649)	235 (519)	161 (355)	115 (254)	87 (192)	-	-	-
C-SHO 400	 <b>3 6</b>	-	43 (94)	36 (79)	34 (74)	24 (52)	19 (41)	-	-	-	-	-
	<b>9A 9B</b>	-	36 (79)	30 (66)	25 (55)	19 (41)	16 (35)	-	-	-	-	-
C-SHO 400 + C-SHO 100	 <b>3 6</b>	-	71 (156)	59 (130)	50 (110)	39 (85)	-	-	-	-	-	-
	<b>9A 9B</b>	-	60 (132)	50 (110)	42 (92)	33 (72)	-	-	-	-	-	-
SUL	 <b>6</b>	315 (695)	267 (589)	232 (512)	205 (452)	166 (366)	140 (309)	121 (267)	106 (234)	-	-	-
SZ	 <b>7</b>	429 (946)	375 (827)	333 (735)	300 (662)	250 (552)	214 (472)	188 (415)	167 (369)	-	-	-
SU	 <b>6 9C 9D</b>	431 (951)	431 (951)	368 (812)	321 (708)	255 (563)	212 (468)	182 (402)	160 (353)	-	-	-
SUR	 <b>6 9C 9D</b>	-	-	-	705 (1555)	582 (1284)	495 (1092)	431 (951)	382 (843)	342 (754)	310 (684)	-
SU + R450	 <b>6</b>	-	-	-	489 (1079)	349 (770)	272 (600)	222 (490)	188 (415)	163 (360)	144 (318)	-
SUR + R450	 <b>7</b>	-	-	-	813 (1793)	670 (1478)	570 (1257)	495 (1092)	438 (966)	393 (867)	356 (785)	300 (662)
SP3S	 <b>3 6</b>	-	377 (831)	301 (663)	250 (551)	187 (412)	149 (328)	124 (273)	106 (233)	-	-	-
SP4	 <b>3 6 9C 9D</b>	470 (1037)	470 (1037)	400 (882)	347 (766)	275 (607)	228 (503)	195 (430)	170 (375)	-	-	-
SP4 + R450	 <b>6</b>	-	-	-	-	486 (1072)	378 (834)	309 (682)	262 (578)	227 (501)	200 (441)	162 (358)
SP4D	 <b>6</b>	837 (1846)	837 (1846)	748 (1650)	675 (1489)	566 (1248)	487 (1074)	428 (944)	381 (840)	344 (759)	313 (691)	-
	<b>9C 9D</b>	875 (1929)	875 (1929)	783 (1726)	708 (1560)	594 (1309)	512 (1128)	450 (992)	401 (884)	362 (798)	329 (725)	-
SP4D + R450	 <b>6</b>	-	-	-	-	810 (1786)	630 (1389)	515 (1136)	436 (962)	378 (834)	333 (735)	270 (596)

### C-SHOT



C-SHOT



PSHO



	B		SWL		e	GS	GC	e	i304	i316
	mm	inch	kg	lb	mm	REF	REF	mm	REF	REF
C-SHOT 100	100	4"	105	232	1,5	207235	207244	1,5	207495	218417
C-SHOT 150	150	6"	75	166	2	207236	207245	1,5	207496	218418
C-SHOT 200	200	8"	70	155	2	207237	207246	1,5	207497	218419
C-SHOT 300	300	12"	37	82	2	207238	207247	1,5	207498	218420
PSHO	-	-	-	-	2	206240	206318	2	218139	218479

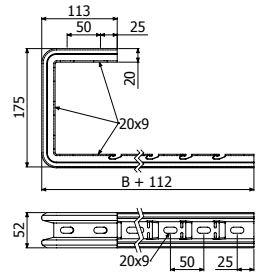
1 PSHO ( 206240-GS / 206318-GC / 218139-I304 / 218479-I316)



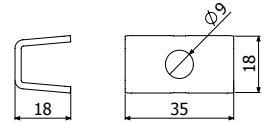
B1 ( 204356-EZ / 206826-GC / 204925-I304 / 218388-I316)



TFSSO



C-SHOT



PSHO

### C-SVO



TFSSO

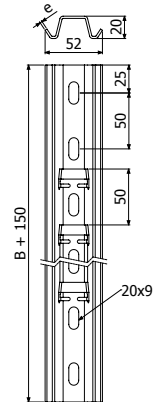
	B		e	SWL		GS	GC	e	i304	i316
	mm	inch	mm	kg	lb	REF	REF	mm	REF	REF
C-SVO 100	100	4"	1,5	250	552	203630	206280	1,5	206285	218421
C-SVO 150	150	6"	1,5	200	441	201073	201078	1,5	201087	218422
C-SVO 200	200	8"	2	294	649	201074	201079	1,5	201088	218423
C-SVO 300	300	12"	2	235	519	201076	201081	1,5	201090	218424
C-SVO 400	400	16"	2	161	355	203629	205719	1,5	206286	218425
C-SVO 450	450	18"	2	115	254	201075	-	-	-	-
C-SVO 500	500	20"	2	115	254	201077	201082	1,5	206287	218426
C-SVO 600	600	24"	2	87	192	205941	205720	1,5	206288	218427

TFSSO (200894)

2 x DIN976 M8x1000 ( 203397-EZ / 206852-I304 ) +  
4 x DIN6923 M8 ( 217553-EZ / 217555-I304 )



B1 ( 204356-EZ / 206826-GC / 204925-I304 / 218388-I316)



### C-SHO



C-SHO 400



PSHO

	L		e	Fmáx	Mmáx	Cd	GS	GC	Fmáx	Mmáx	Cd	i304	i316
	mm	inch	mm	kg	kg-m	mm/kg-m	REF	REF	kg	kg-m	mm/kg-m	REF	REF
C-SHO 400	400	16"	2	200	5,4	3,05	207234	207243	185	4,4	5,8	207494	218416
C-SHO 400+C-SHO 100	400	16"	2	341	8,8	2,35	-	-	318	7,3	3,5	-	-
PSHO	-	-	2	-	-	-	206240	206318	-	-	-	218139	218479



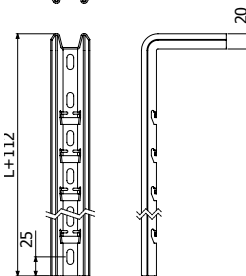
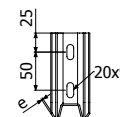
C-SHO 400 + C-SHO 100

C-SHO 100 ( 207230-GS / 207249-GC / 207490-I304 / 218424-I316 ) + CT2 M8x55 ( 210088-EZ )

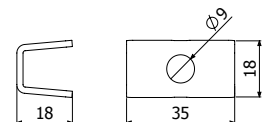


C-SHO 400 + C-SHO 200

C-SHO + DIN933 ( 217545-EZ ) + DIN6923 M8 ( 217553-EZ / 217555-I304 / 218679-I316 )



C-SHO



PSHO

## SUL



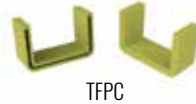
SUL+SCR

	L		e	ep	Fmáx	Mmáx	GC
	mm	inch	mm	mm	kg	kg-m	REF
SUL 210	210	8 1/4"	2	4	383	34,44	204518
SUL 300	300	12"	2	4	383	34,44	204519
SUL 600	600	24"	2	4	383	34,44	207280

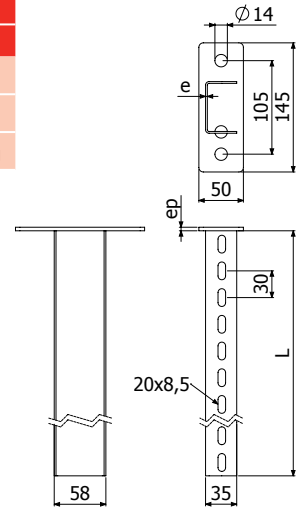
TFPC PVC (214809)

SCR/SRB/SHL/SHR + 2/100 x B2 ( 204926-EZ / 206792-GC / 205392-i304 / 218443-i316)

C-SR + 2 x CT2 ( 214307 - i304)



TFPC



## SU



SU



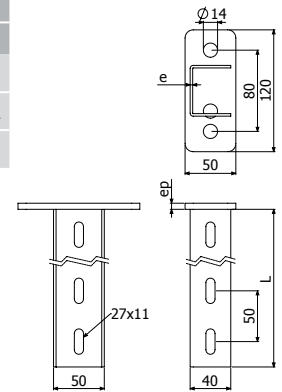
	L		e	ep	Fmáx	Mmáx	Cd	GC	i304	i316
	mm	inch	mm	mm	kg	kg-m	mm/kg-m	REF	REF	REF
SU400	400	16"	2,5	6	656	51,55	0,191	207142	217148	218473
SU600	600	24"	2,5	6	656	51,55	0,287	207143	217149	218474
SU800	800	32"	2,5	6	656	51,55	0,398	207144	217150	218475

TFSU PVC ( 212114)

SCR/SRB/SHL/SHR + 2/100 x B2 ( 204926-EZ / 206792-GC / 205392-i304 / 218443-i316)



TFSU



## SUR



SUR



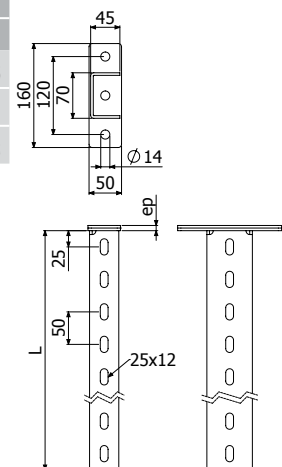
	L		e	ep	Fmáx	Mmáx	Cd	GC	i304	i316
	mm	inch	mm	mm	kg	kg-m	mm/kg-m	REF	REF	REF
SUR600	600	24"	4	8	1100	145	0,08	207487	217598	218476
SUR800	800	32"	4	8	1100	145	0,131	207488	217599	218477
SUR1000	1000	40"	4	8	1100	145	0,204	207489	209881	218478

TFSUR PVC (214254)

SHL / SHR / SP4 / SP4 D+2/50xB3 (208827-GC / 212096-i304 / 215575-i316)



TFSUR



**SP3S**

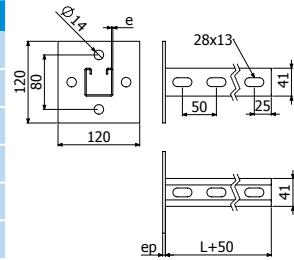


SP3S



SP3S+SHST

	L		e	ep	Fmáx	Mmáx	Cd	GC	EZ
	mm	inch	mm	mm	kg	kg·m	mm/kg·m	REF	REF
SP3S 400	400	16"	2	4	800	34,5	0,195	217308	218658
SP3S 500	500	20"	2	4	800	34,5	-	217309	218659
SP3S 600	600	24"	2	6	800	34,5	0,325	217310	218660
SP3S 800	800	32"	2	6	800	34,5	0,514	217311	218661
SP3S 1000	1000	40"	2	6	800	34,5	0,811	218664	218662
SP3S 1200	1200	48"	2	6	800	34,5	-	218665	218663



TF41 PVC ( 205627)

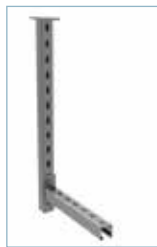


TF41

**SP4**



SP4



SP4+SP4



TF41

	L		ep	Fmáx	Mmáx	Cd	EZ	GC	e	i304	i316
	mm	inch	mm	kg	kg·m	mm/kg·m	REF	REF	mm	REF	REF
SP4 400	400	16"	4	725	55,15	0,203	206832	201036	2	218132	218466
SP4 500	500	20"	6	725	55,15	0,265	206833	201037	2	218666	218669
SP4 600	600	24"	6	725	55,15	0,326	206834	204938	2	218667	218669
SP4 800	800	32"	6	725	55,15	0,509	206835	201038	-	-	-
SP4 1000	1000	40"	6	725	55,15	0,721	-	205086	-	-	-

TF41 PVC ( 205627)



SCR/SRB(GC)+2xTEPM10x30(217567-EZ)/  
SCR/SRB+2xTM41M8(217583-GC/218524-i304/217611-i316)  
+2xDIN933M8x30(205964-i304)+2xDIN125M8(217544-i304)  
+2x4182K(218515-GC/218758-i304)



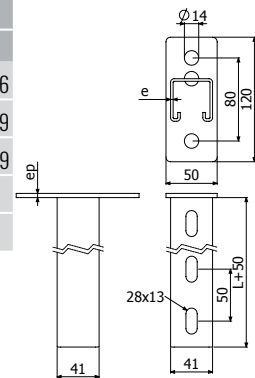
SHL/SP/SHR+2xDIN933M10x30(217547-i304/217600-i316)  
+2xTM41M10(217584-GC/218525-i304/217612-i316)+2xDIN125M10(217542-i304/218741-i316)



SCR/SRB+2/100xB2(206792-GC/205392-i304/218443-i316)



SHL+2/50xB3(208827-GC/212096-i304/215575-i316)



## SP4D



SP4D



SP4D+SHR



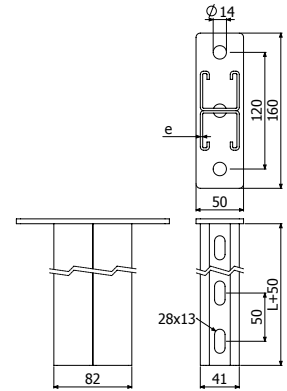
TF41

	L		e	ep	Fmáx	Mmáx	Cd	GC	e	Fmáx	Mmáx	Cd	i304	i316
	mm	inch	mm	mm	kg	kg-m	mm/kg-m	REF	mm	kg	kg-m	mm/kg-m	REF	REF
SP4D 500	500	20"	2,5	8	1100	133	0,147	206272	2	1144	141	0,139	218134	218468
SP4D 600	600	24"	2,5	8	1100	133	0,179	205621	2	1144	141	0,17	218135	218469
SP4D 700	700	28"	2,5	8	1100	133	0,211	206273	2	1144	141	0,2	218136	218470
SP4D 800	800	32"	2,5	8	1100	133	0,263	206274	2	1144	141	0,249	218137	218471
SP4D 1000	1000	40"	2,5	8	1100	133	0,316	204641	2	1144	141	0,299	218138	218472
SP4D 1500	1500	59"	2,5	8	1100	133	-	204642	-	-	-	-	-	-
SP4D 2000	2000	79"	2,5	8	1100	133	-	218740	-	-	-	-	-	-

### TF41 PVC ( 205627)

SCR/SRB GC + 2 x TEP M10x30 ( 217567-EZ ) / 2 x TM41 M8 ( 217583-GC / 218524-i304 / 217611-i316 ) + 2 x DIN933 M8x30 ( 205964-i304 ) + 2 x DIN125 M8 ( 217544-i304 ) + 2 x 4182K ( 218515-GC / 218758-i304 )

SHL/SHR/SP4/SP4D + 2 x DIN933 M10x30 ( 217547-i304 ) ( 217600-i316 ) + 2 x TM41 M10 ( 217584-GC / 218525-i304 / 217612-i316 ) + 2 x DIN125 M10 ( 217542-i304 / 218741-i316 )



## R450

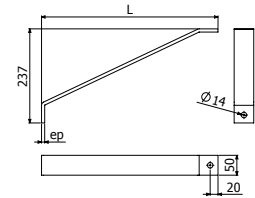


SP4D+R450

	L		e	GC
	mm	inch	mm	REF
R450	450	18"	8	207325

SU/SUR/SP4/SP3S/SP8 + 1/50 x B3 ( 208827-GC / 212096-i304 / 215575-i316 )

SP/SP4D + DIN933 M10x30 ( 217547-i304 ) + TM41 M10 ( 217584-GC ) + DIN125 M10 ( 217542-i304 / 218741-i316 )



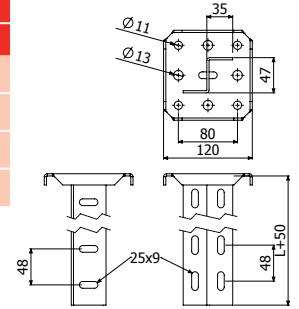
## SZ



SZ+2xSCR

	L		e	Fmáx	Mmáx	Cd	GC
	mm	inch					REF
SZ 300	300	12"	3	556	54,1	0,224	201069
SZ 400	400	16"	3	556	54,1	0,259	201070
SZ 500	500	20"	3	556	54,1	0,345	201071
SZ 600	600	24"	3	556	54,1	0,483	201072

SCR/SRB/SHL + 2/100 x B2 (206792-GC)



## KI8 + I8



KI8+I8



KI8



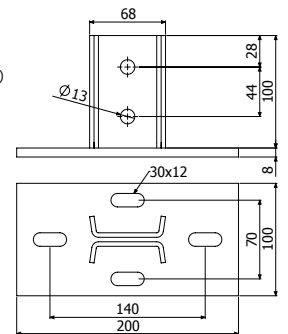
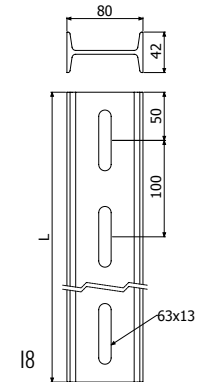
TFI8

	L		Fmáx	Mmáx	Cd	GC
	mm	inch				REF
I8 600	600	24"	1337	165	0,069	206345
I8 1000	1000	40"	1337	165	0,092	206346
I8 1300	1300	51"	1337	165	0,117	206347
I8 1500	1500	59"	1337	165	0,138	206348
I8 2000	2000	79"	1337	165	0,172	206349
I8 3000	3000	118"	1337	165	0,275	206350
KI8	-	-	-	-	-	206056

TFI8 PVC (206947)

SHV+I8: 2/100 x CT1 M10X30 (206320-i304) + 2 x DIN125 M10 (217542-i304 / 218741-i316)

KI8+I8: 2/100 x CT1 M10X30 (206320-i304) + 2 x DIN125 M10 (217542-i304 / 218741-i316)



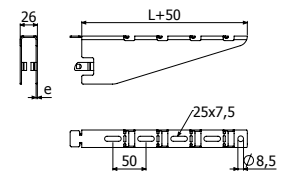
## SHST



CLICK

	L		e	SWL		GS
	mm	inch		kg	lb	REF
SHST 100	100	4"	1,5	160	352	214489
SHST 150	150	6"	1,5	160	352	214490
SHST 200	200	8"	1,5	146	321	214491
SHST 300	300	12"	2	157	346	214492
SHST 400	400	16"	2	124	273	214493
SHST 500	500	20"	2	111	244	214494
SHST 600	600	24"	2	106	233	214495

B1 (204356-EZ)



SP3S+2xSHST



SP3S+4xSHST



1



2



3