

BasorTrav^F



BasorTRAV



B		Filling Area		H100				
				Max. Filling				
mm	inch	cm ²	in ²	1,5m	2m	2,5m	3m	4m
100	4	83	12,9	100%	100%	100%	100%	100%
150	6	125	19,4	100%	100%	100%	100%	100%
200	8	166	25,7	100%	100%	100%	100%	100%
300	12	249	38,6	100%	100%	100%	100%	100%
400	16	332	51,5	100%	100%	100%	100%	79%
500	20	415	64,3	100%	100%	100%	100%	63%
600	24	498	77,2	100%	100%	100%	96%	52%

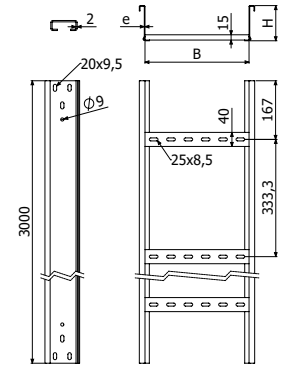
F



L = 3 m (10 ft)

	B		H		e	AL
	mm	inch	mm	inch		
F 100x100x2-333 3M	100	4"	100	4"	2	204523
F 150x100x2-333 3M	150	6"	100	4"	2	204524
F 200x100x2-333 3M	200	8"	100	4"	2	205960
F 300x100x2-333 3M	300	12"	100	4"	2	204525
F 400x100x2-333 3M	400	16"	100	4"	2	214938
F 500x100x2-333 3M	500	20"	100	4"	2	214939
F 600x100x2-333 3M	600	24"	100	4"	2	214940

2 x JUF 100 (204322 - AL)

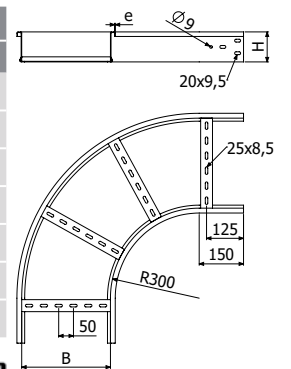


CPF-300



	B		H		R		e	AL
	mm	inch	mm	inch	mm	inch		
CPF-300 100x100x2	100	4"	100	4"	300	12"	2	206254
CPF-300 150x100x2	150	6"	100	4"	300	12"	2	204530
CPF-300 200x100x2	200	8"	100	4"	300	12"	2	206344
CPF-300 300x100x2	300	12"	100	4"	300	12"	2	204531
CPF-300 400x100x2	400	16"	100	4"	300	12"	2	217151
CPF-300 500x100x2	500	20"	100	4"	300	12"	2	217152
CPF-300 600x100x2	600	24"	100	4"	300	12"	2	217153

2 x JUF 100 (204322 - AL)

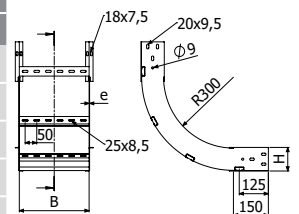


CCF-300



	B		H		R		e	AL
	mm	inch	mm	inch	mm	inch		
CCF-300 100x100x2	100	4"	100	4"	300	12"	2	204535
CCF-300 150x100x2	150	6"	100	4"	300	12"	2	204536
CCF-300 200x100x2	200	8"	100	4"	300	12"	2	206207
CCF-300 300x100x2	300	12"	100	4"	300	12"	2	204537
CCF-300 400x100x2	400	16"	100	4"	300	12"	2	217154
CCF-300 500x100x2	500	20"	100	4"	300	12"	2	217155
CCF-300 600x100x2	600	24"	100	4"	300	12"	2	217156

2 x JUF 100 (204322 - AL)

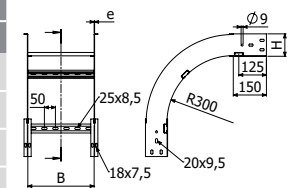


CXF-300



	B		H		R		e	AL
	mm	inch	mm	inch	mm	inch		
CXF-300 100x100x2	100	4"	100	4"	300	12"	2	204541
CXF-300 150x100x2	150	6"	100	4"	300	12"	2	204542
CXF-300 200x100x2	200	8"	100	4"	300	12"	2	204543
CXF-300 300x100x2	300	12"	100	4"	300	12"	2	204709
CXF-300 400x100x2	400	16"	100	4"	300	12"	2	217157
CXF-300 500x100x2	500	20"	100	4"	300	12"	2	217158
CXF-300 600x100x2	600	24"	100	4"	300	12"	2	217159

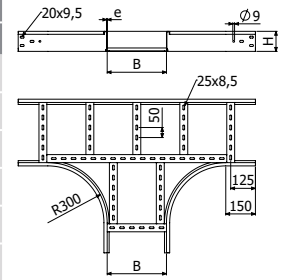
2 x JUF 100 (204322 - AL)



TEF-300



	B		H		R		e	AL
	mm	inch	mm	inch	mm	inch	mm	REF
TEF-300 100x100x2	100	4"	100	4"	300	12"	2	206024
TEF-300 150x100x2	150	6"	100	4"	300	12"	2	217160
TEF-300 200x100x2	200	8"	100	4"	300	12"	2	217161
TEF-300 300x100x2	300	12"	100	4"	300	12"	2	217162
TEF-300 400x100x2	400	16"	100	4"	300	12"	2	217163
TEF-300 500x100x2	500	20"	100	4"	300	12"	2	217164
TEF-300 600x100x2	600	24"	100	4"	300	12"	2	217165



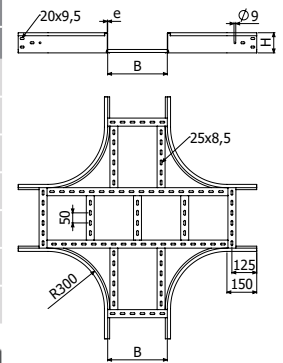
2 x JUF 100 (204322 - AL)



CRF-300



	B		H		R		e	AL
	mm	inch	mm	inch	mm	inch	mm	REF
CRF-300 100x100x2	100	4"	100	4"	300	12"	2	217166
CRF-300 150x100x2	150	6"	100	4"	300	12"	2	217167
CRF-300 200x100x2	200	8"	100	4"	300	12"	2	217168
CRF-300 300x100x2	300	12"	100	4"	300	12"	2	217169
CRF-300 400x100x2	400	16"	100	4"	300	12"	2	217170
CRF-300 500x100x2	500	20"	100	4"	300	12"	2	217171
CRF-300 600x100x2	600	24"	100	4"	300	12"	2	217172



2 x JUF 100 (204322 - AL)

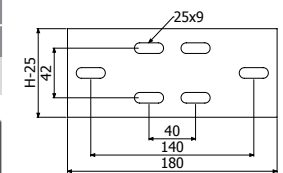


JUF



JUF 100	H		e	AL
	mm	inch	mm	REF
	100	4"	2,5	204322

6 /100 B2 (205392-i304)

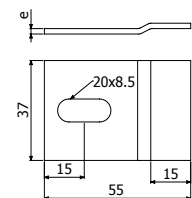


BFE

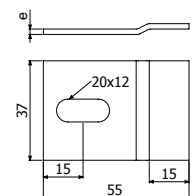


	e	AL
	mm	REF
BFE 8	3	204289
BFE 10	3	205411

SHL-SHR --> B2 (205392 - i304)
 SP4/SP4D + BFE 8 --> ISO7380-2 M8X30 (218823 - i304)
 + TM41 M8 (218524-i304)
 SP4/SP4D + BFE 10 --> DIN933 M10X30 (217547 - i304)
 + TM41 M10 (218525-i304)



BFE 8



BFE 10

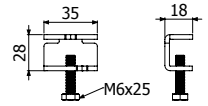
BEV



BEV



	H		i304
	inch	mm	REF
BEV	6	150	214473



B2



B2-100



	Pap	i304
	N-m	REF
B2-100	15	205392

