

BasorTrav FE60



BasorTRAV



B		Filling Area		H60				
mm	inch	cm ²	in ²	Max. Filling				
				2	3	4	5	6
100	4	45	7,0	100%	100%	100%	100%	100%
150	6	67	10,4	100%	100%	100%	100%	100%
200	8	89	13,8	100%	100%	100%	100%	100%
300	12	134	20,8	100%	100%	100%	100%	81%
400	16	178	27,6	100%	100%	100%	78%	61%
500	20	223	36,1	100%	100%	100%	62%	49%
600	24	267	41,4	100%	100%	90%	52%	41%

*Maximum filling depending on support span (m) considering a cable load of 0,23 kg/(m·cm²)

FE H60

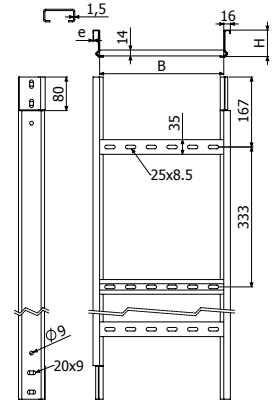


L = 3 m (10 ft)



	B		H		e	GC
	mm	inch	mm	inch	mm	REF
FE 100x60x1,5-333 3M	100	4"	63	2 1/2"	1,5	200749
FE 150x60x1,5-333 3M	150	6"	63	2 1/2"	1,5	200750
FE 200x60x1,5-333 3M	200	8"	63	2 1/2"	1,5	200751
FE 300x60x1,5-333 3M	300	12"	63	2 1/2"	1,5	200752
FE 400x60x1,5-333 3M	400	16"	63	2 1/2"	1,5	200753
FE 500x60x1,5-333 3M	500	20"	63	2 1/2"	1,5	200754
FE 600x60x1,5-333 3M	600	24"	63	2 1/2"	1,5	200755

4/100 x B2 (206792 - GC)



TFE

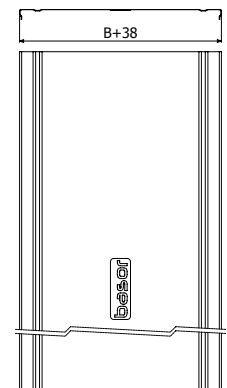


L = 3 m (10 ft)
400/500/600 - L = 2 m (6,56 ft)

	B		e	GC
	mm	inch	mm	REF
TFE 100x1,5 3M	100	4"	1,5	204937
TFE 150x1,5 3M	150	6"	1,5	204472
TFE 200x1,5 3M	200	8"	1,5	204473
TFE 300x1,5 3M	300	12"	1,5	203579
TFE 400x1,5 2M	400	16"	1,5	204430
TFE 500x1,5 2M	500	20"	1,5	204509
TFE 600x1,5 2M	600	24"	1,5	204494



4 x PTFE/PTFE-E60 -> 1 x TFE



TFEL

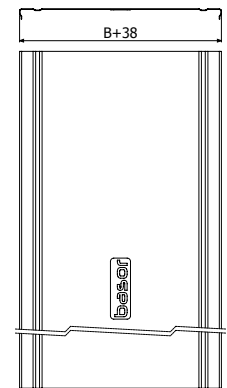


L = 3 m (10 ft)
400/500/600 - L = 2 m (6,56 ft)

	B		e	GC
	mm	inch	mm	REF
TFEL 100x0,8 3M	100	4"	0,8	210000
TFEL 150x0,8 3M	150	6"	0,8	210001
TFEL 200x0,8 3M	200	8"	0,8	210002
TFEL 300x0,8 3M	300	12"	0,8	210003
TFEL 400x1 2M	400	16"	1	210004
TFEL 500x1 2M	500	20"	1	210005
TFEL 600x1 2M	600	24"	1	210006



4 x PTFE/PTFE-E60 -> 1 x TFEL



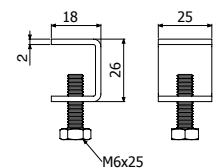
PTFE



PTFE	Pap	e	i304	i316
	N·m	mm	REF	REF
	6	2	207054	218568



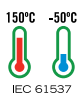
4 x PTFE => 1 x TFE / TFEL



BasorTrav *FE60*

ACCESSORIES

BasorTRAV



TFE



CPFE



CCFE



CXFE



TEFE



CRFE



REFE



BFE



PTFE



JUFE-A



JUFE



JUFE-B



PS



BJCFE



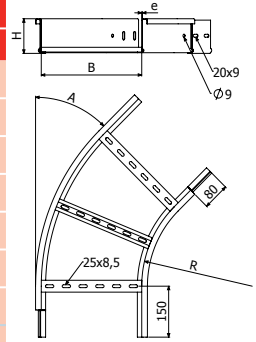
B2



CPFE



	B		H		e	GC			
	mm	inch	mm	inch		30°	45°	60°	90°
CPFE-300 100X60X1.5	100	4"	63	2 1/2"	1,5	217613	217620	217627	217634
CPFE-300 150X60X1.5	150	6"	63	2 1/2"	1,5	217614	217621	217628	217635
CPFE-300 200X60X1.5	200	8"	63	2 1/2"	1,5	217615	217622	217629	217636
CPFE-300 300X60X1.5	300	12"	63	2 1/2"	1,5	217616	217623	217630	217637
CPFE-300 400X60X1.5	400	16"	63	2 1/2"	1,5	217617	217624	217631	217638
CPFE-300 500X60X1.5	500	20"	63	2 1/2"	1,5	217618	217625	217632	217639
CPFE-300 600X60X1.5	600	24"	63	2 1/2"	1,5	217619	217626	217633	217640
CPFE-600 100X60X1.5	100	4"	63	2 1/2"	1,5	217641	217648	217655	217662
CPFE-600 150X60X1.5	150	6"	63	2 1/2"	1,5	217642	217649	217656	217663
CPFE-600 200X60X1.5	200	8"	63	2 1/2"	1,5	217643	217650	217657	217664
CPFE-600 300X60X1.5	300	12"	63	2 1/2"	1,5	217644	217651	217658	217665
CPFE-600 400X60X1.5	400	16"	63	2 1/2"	1,5	217645	217652	217659	217666
CPFE-600 500X60X1.5	500	20"	63	2 1/2"	1,5	217646	217653	217660	217667
CPFE-600 600X60X1.5	600	24"	63	2 1/2"	1,5	217647	217654	217661	217668



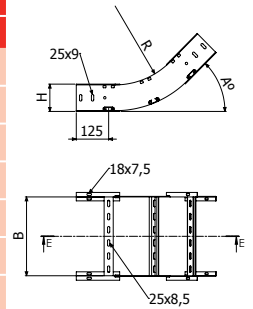
4/100 x B2 (206792 - GC)



CCFE



	B		H		e	GC			
	mm	inch	mm	inch		30°	45°	60°	90°
CCFE-300 100X60X1.5	100	4"	63	2 1/2"	1,5	217669	217676	217683	217690
CCFE-300 150X60X1.5	150	6"	63	2 1/2"	1,5	217670	217677	217684	217691
CCFE-300 200X60X1.5	200	8"	63	2 1/2"	1,5	217671	217678	217685	217692
CCFE-300 300X60X1.5	300	12"	63	2 1/2"	1,5	217672	217679	217686	217693
CCFE-300 400X60X1.5	400	16"	63	2 1/2"	1,5	217673	217680	217687	217694
CCFE-300 500X60X1.5	500	20"	63	2 1/2"	1,5	217674	217681	217688	217695
CCFE-300 600X60X1.5	600	24"	63	2 1/2"	1,5	217675	217682	217689	217696
CCFE-600 100X60X1.5	100	4"	63	2 1/2"	1,5	217697	217704	217711	217718
CCFE-600 150X60X1.5	150	6"	63	2 1/2"	1,5	217698	217705	217712	217719
CCFE-600 200X60X1.5	200	8"	63	2 1/2"	1,5	217699	217706	217713	217720
CCFE-600 300X60X1.5	300	12"	63	2 1/2"	1,5	217700	217707	217714	217721
CCFE-600 400X60X1.5	400	16"	63	2 1/2"	1,5	217701	217708	217715	217722
CCFE-600 500X60X1.5	500	20"	63	2 1/2"	1,5	217702	217709	217716	217723
CCFE-600 600X60X1.5	600	24"	63	2 1/2"	1,5	217703	217710	217717	217724



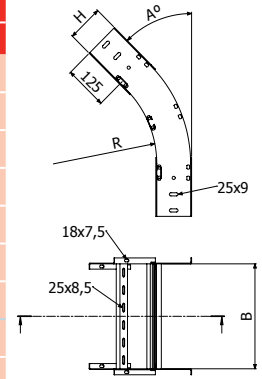
2 x JUFE



CXFE



	B		H		e	GC			
	mm	inch	mm	inch		30°	45°	60°	90°
CXFE-300 100X60X1.5	100	4"	63	2 1/2"	1,5	217725	217732	217739	217746
CXFE-300 150X60X1.5	150	6"	63	2 1/2"	1,5	217726	217733	217740	217747
CXFE-300 200X60X1.5	200	8"	63	2 1/2"	1,5	217727	217734	217741	217748
CXFE-300 300X60X1.5	300	12"	63	2 1/2"	1,5	217728	217735	217742	217749
CXFE-300 400X60X1.5	400	16"	63	2 1/2"	1,5	217729	217736	217743	217750
CXFE-300 500X60X1.5	500	20"	63	2 1/2"	1,5	217730	217737	217744	217751
CXFE-300 600X60X1.5	600	24"	63	2 1/2"	1,5	217731	217738	217745	217752
CXFE-600 100X60X1.5	100	4"	63	2 1/2"	1,5	217753	217760	217767	217774
CXFE-600 150X60X1.5	150	6"	63	2 1/2"	1,5	217754	217761	217768	217775
CXFE-600 200X60X1.5	200	8"	63	2 1/2"	1,5	217755	217762	217769	217776
CXFE-600 300X60X1.5	300	12"	63	2 1/2"	1,5	217756	217763	217770	217777
CXFE-600 400X60X1.5	400	16"	63	2 1/2"	1,5	217757	217764	217771	217778
CXFE-600 500X60X1.5	500	20"	63	2 1/2"	1,5	217758	217765	217772	217779
CXFE-600 600X60X1.5	600	24"	63	2 1/2"	1,5	217759	217766	217773	217780



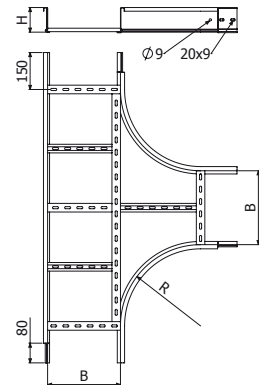
2 x JUFE



TEFE



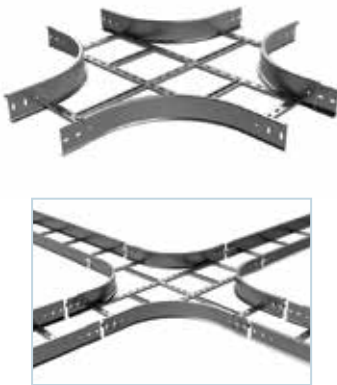
	R		B		H		e	GC
	mm	inch	mm	inch	mm	inch		REF
TEFE-300 100X60X1.5	300	12"	100	4"	63	2 1/2"	1,5	217781
TEFE-300 150X60X1.5	300	12"	150	6"	63	2 1/2"	1,5	217782
TEFE-300 200X60X1.5	300	12"	200	8"	63	2 1/2"	1,5	217783
TEFE-300 300X60X1.5	300	12"	300	12"	63	2 1/2"	1,5	217784
TEFE-300 400X60X1.5	300	12"	400	16"	63	2 1/2"	1,5	217785
TEFE-300 500X60X1.5	300	12"	500	20"	63	2 1/2"	1,5	217786
TEFE-300 600X60X1.5	300	12"	630	24"	63	2 1/2"	1,5	217787
TEFE-600 100X60X1,5	600	24"	100	4"	63	2 1/2"	1,5	217788
TEFE-600 150X60X1,5	600	24"	150	6"	63	2 1/2"	1,5	217789
TEFE-600 200X60X1,5	600	24"	200	8"	63	2 1/2"	1,5	217790
TEFE-600 300X60X1,5	600	24"	300	12"	63	2 1/2"	1,5	217791
TEFE-600 400X60X1,5	600	24"	400	16"	63	2 1/2"	1,5	217792
TEFE-600 500X60X1,5	600	24"	500	20"	63	2 1/2"	1,5	217793
TEFE-600 600X60X1,5	600	24"	630	24"	63	2 1/2"	1,5	217794



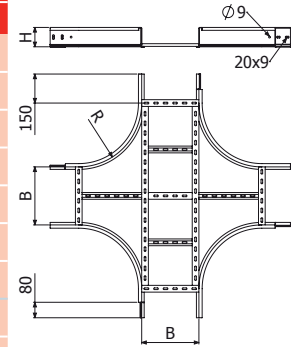
4/100 x B2 (206792 - GC)



CRFE



	R		B		H		e	GC
	mm	inch	mm	inch	mm	inch	mm	REF
CRFE-300 100X60X1,5	300	12"	100	4"	63	2 1/2"	1,5	217795
CRFE-300 150X60X1,5	300	12"	150	6"	63	2 1/2"	1,5	217796
CRFE-300 200X60X1,5	300	12"	200	8"	63	2 1/2"	1,5	217797
CRFE-300 300X60X1,5	300	12"	300	12"	63	2 1/2"	1,5	217798
CRFE-300 400X60X1,5	300	12"	400	16"	63	2 1/2"	1,5	217799
CRFE-300 500X60X1,5	300	12"	500	20"	63	2 1/2"	1,5	217800
CRFE-300 600X60X1,5	300	12"	630	24"	63	2 1/2"	1,5	217801
CRFE-600 100X60X1,5	600	24"	100	4"	63	2 1/2"	1,5	217802
CRFE-600 150X60X1,5	600	24"	150	6"	63	2 1/2"	1,5	217803
CRFE-600 200X60X1,5	600	24"	200	8"	63	2 1/2"	1,5	217804
CRFE-600 300X60X1,5	600	24"	300	12"	63	2 1/2"	1,5	217805
CRFE-600 400X60X1,5	600	24"	400	16"	63	2 1/2"	1,5	217806
CRFE-600 500X60X1,5	600	24"	500	20"	63	2 1/2"	1,5	217807
CRFE-600 600X60X1,5	600	24"	630	24"	63	2 1/2"	1,5	217808



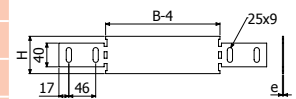
4/100 x B2 (206792 - GC)



REFE H60



	B		H		e	GC
	mm	inch	mm	inch	mm	REF
REFE 50x60x2	50	2"	63	2 1/2"	2	206799
REFE 100x60x2	100	4"	63	2 1/2"	2	206800
REFE 150x60x2	150	6"	63	2 1/2"	2	206801
REFE 200x60x2	200	8"	63	2 1/2"	2	206802



4/100 x B2 (206792 - GC)



BFE



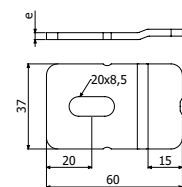
	e	GC	e	i304	i316
	mm	REF	mm	REF	REF
BFE 6/8	3	200863	1,5	203293	-
BFE 10	3	200864	1,5	218531	218532



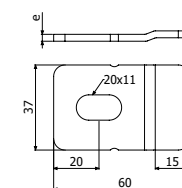
BFE 6/8 --> SHL --> B2 (206792 - GC)



SP4/SP4D + BFE 10 --> DIN933 10X30 (217547- i304)
+ TM41 M10 (217584 - GC / 218524 - i304) + DIN125 M10 (217542- i304)



BFE 6/8



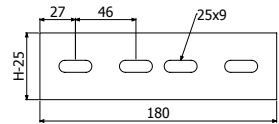
BFE 10

JUFE H60

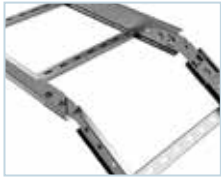


	H		e	GC
	mm	inch	mm	REF
JUFE 60/75	75	3"	2	200854

4/100 x B2 (206792 - GC)

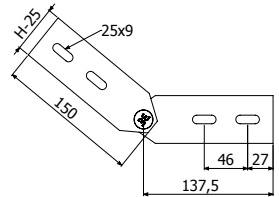


JUFE-A H60



	H		e	GC
	mm	inch	mm	REF
JUFE-A 60/75	75	3"	2	200857

4/100 x B2 (206792 - GC)

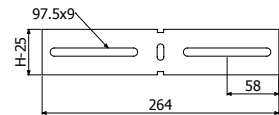


JUFE-B H60



	H		e	GC
	mm	inch	mm	REF
JUFE-BB 60/75	75	3"	2	200860

4/100 x B2 (206792 - GC)



PS

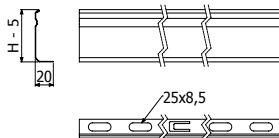


L = 3 m (10 ft)

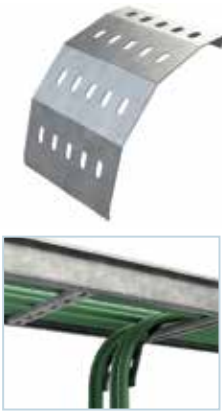
	H		GC
	mm	inch	REF
PS 35	35	1 3/8"	203479

3 x (ISO7380-2 M8x30 (218823-i304) + DIN934 M8 (217603-i304))

PS 35→ H60.

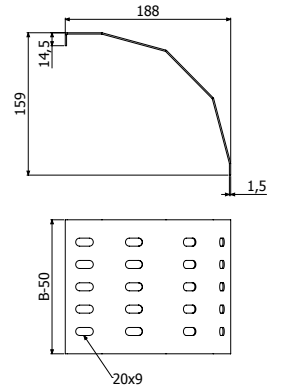


BJCFE



	e	GC
	mm	REF
BJCFE 100	1,5	210021
BJCFE 150	1,5	210022
BJCFE 200	1,5	210023
BJCFE 300	1,5	210024
BJCFE 400	1,5	210025
BJCFE 500	1,5	210026
BJCFE 600	1,5	210027

2/100 x B2 (206792 - GC)

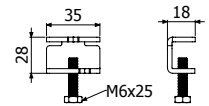


BEV



	GC	i304	i316
	REF	REF	REF
BEV	211805	214473	218574

10

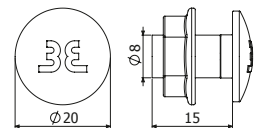


B2



	Pap	GC	i304
	N-m	REF	REF
B2-100	15	206792	205392

13



BasorTRAV