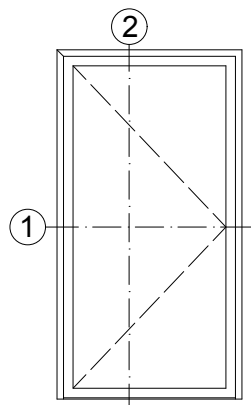
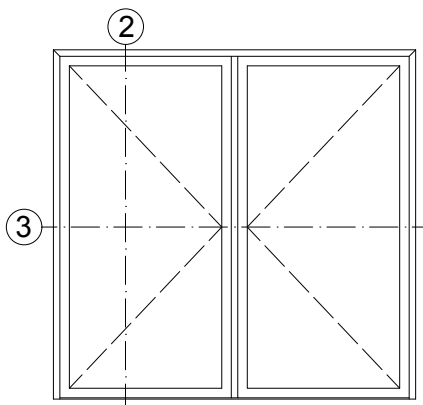


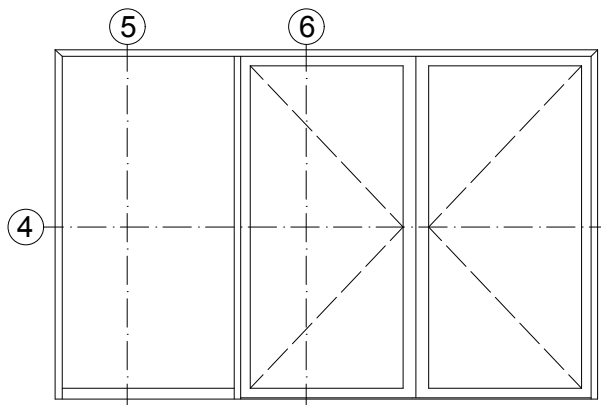
Einflügelige Tür
Single-leaf door



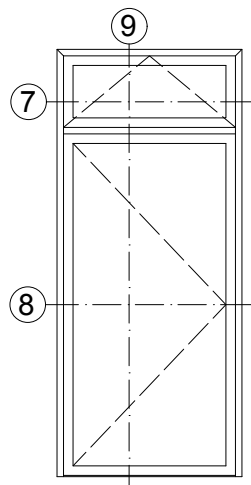
Zweiflügelige Tür
Double-leaf door



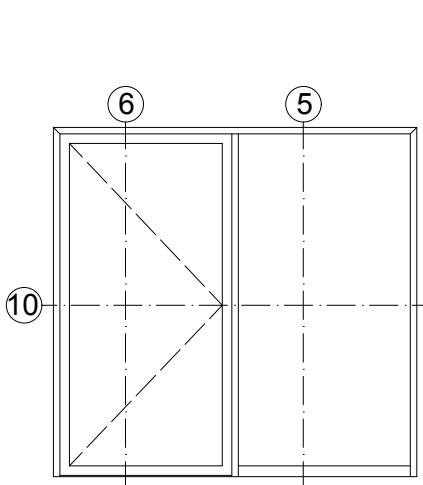
Zweiflügelige Tür mit Festfeld
Double-leaf door with fixed light



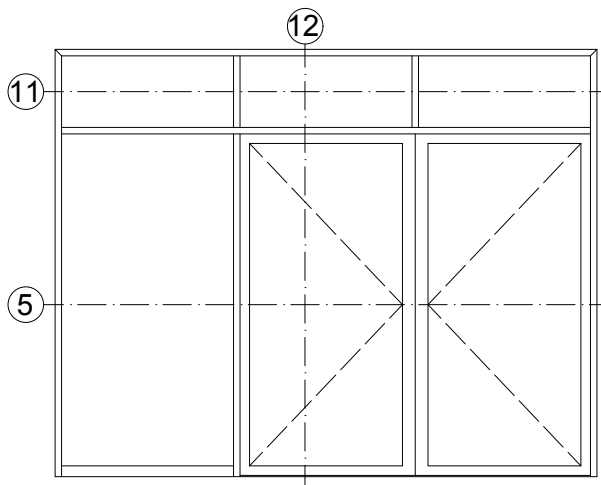
Einflügelige Tür mit Oberlicht
Single-leaf door with toplight



Einflügelige Tür mit Festfeld
Single-leaf door with fixed light



Zweiflügelige Tür mit Festfeld und Oberlicht
Double-leaf door with fixed light and toplight



Technische Informationen

Technical information

Prüfungen und Normen *	
Tests and standards	
Wärmedämmung nach DIN EN ISO 1077-2	Uf = 2,21 W/(m²K)
Thermal insulation in accordance with DIN EN ISO 1077-2	
Schalldämmung nach DIN EN ISO 140-3	bis Rw 43 dB
Sound reduction in accordance with DIN EN ISO 140-3	Up to Rw 43 dB
Einbruchhemmung nach DIN V ENV 1627	Klasse WK3
Burglar resistance in accordance with DIN V ENV 1627	Class WK3
Luftdurchlässigkeit nach DIN EN 12207	Klasse 2
Air permeability in accordance with DIN EN 12207	Class 2
Schlagregendichtheit nach DIN EN 12208	Klasse 5A
Watertightness in accordance with DIN EN 12208	Class 5A
Windlastwiderstand nach DIN EN 12210	Klasse 2
Wind load resistance in accordance with DIN EN 12210	Class 2
Mechanische Beanspruchung nach DIN EN 13115	Klasse 2
Mechanical loading in accordance with DIN EN 13115	Class 2
Dauerfunktion nach DIN EN 12400	Klasse 6
Durability in accordance with DIN EN 12400	Class 6

* Die Angaben beschreiben die Bestwerte des Gesamtsystems bei innen als auch außen öffnenden Ausführungen. Die Eigenschaften einer jeweils gewählten Ausführungsvariante oder Elementkombination sind im Einzelfall anhand der ausführlichen Prüfdokumentation zu bestimmen.

The information describes the optimum values of the entire system for both inward and outward-opening designs. The properties of a selected design option or unit combination have to be determined individually based on the comprehensive test documentation.

Elementbeispiele
- Innen öffnend, flächenbündig

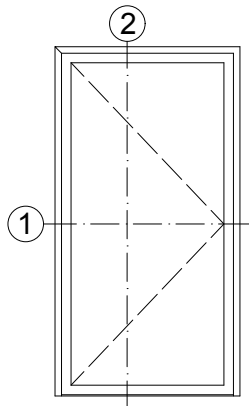
Unit examples
- Inward-opening, flush-fitted

AB2000251

0201

Schüco ADS 75 HD.HI

Einflügelige Tür
Single-leaf door

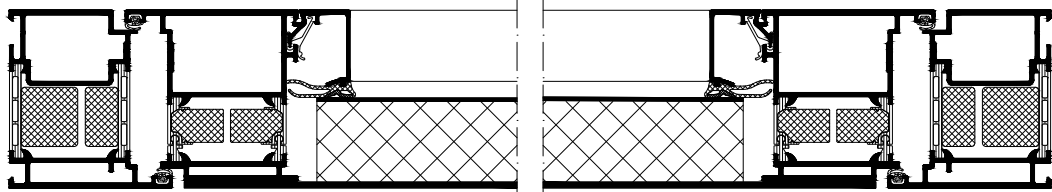


①



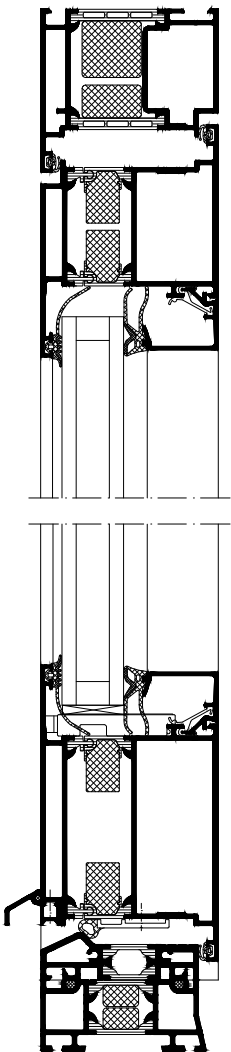
①

Flügelüberdeckend einseitig
Leaf-enclosing on one side

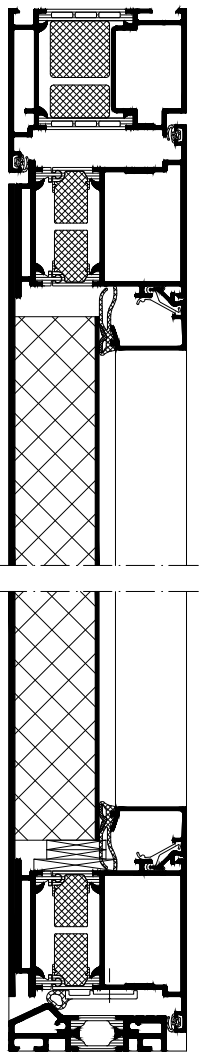


Flügelüberdeckend einseitig
Leaf-enclosing on one side

②



②



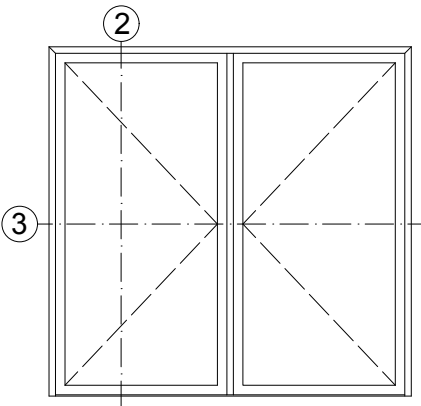
Elementschnitte
- Innen öffnend, flächenbündig
Unit section details
- Inward-opening, flush-fitted

AB2000252

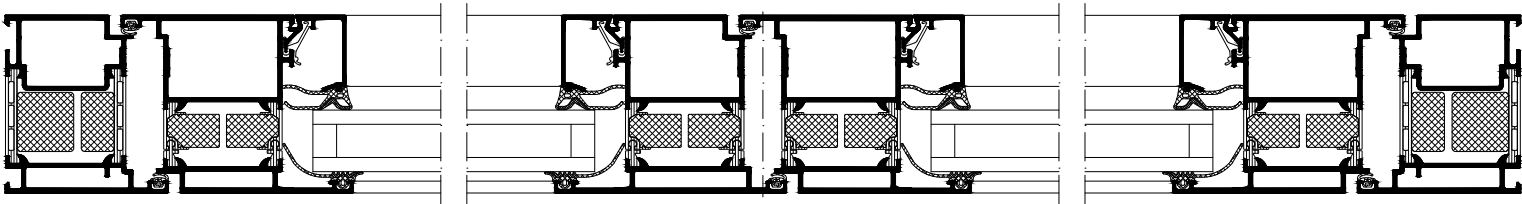
0201

Schüco ADS 75 HD.HI

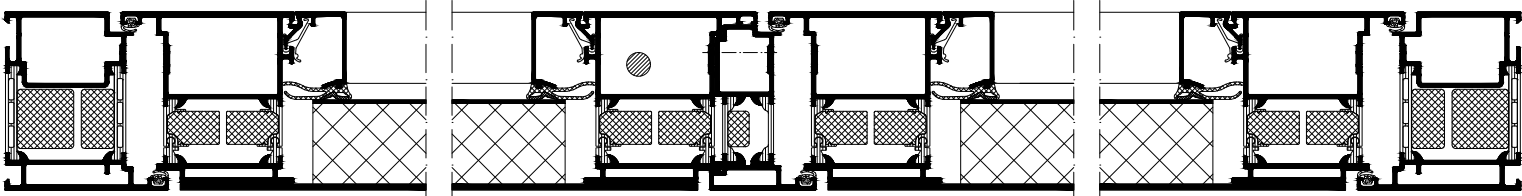
Zweiflügelige Tür
Double-leaf door



3

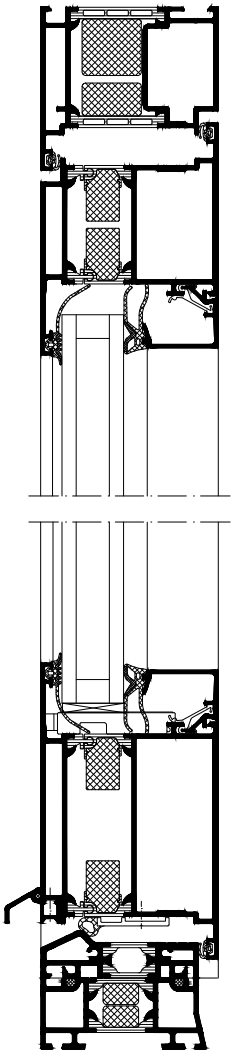


3 Flügelüberdeckend einseitig
Leaf-enclosing on one side

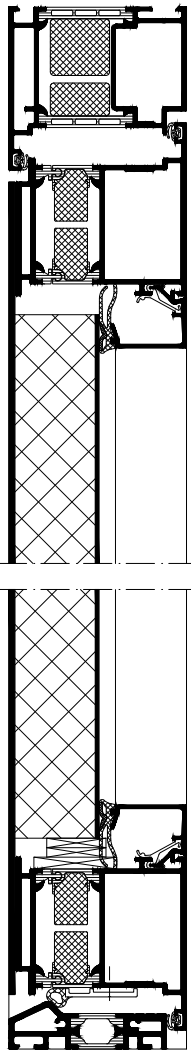


Flügelüberdeckend einseitig
Leaf-enclosing on one side

2



2



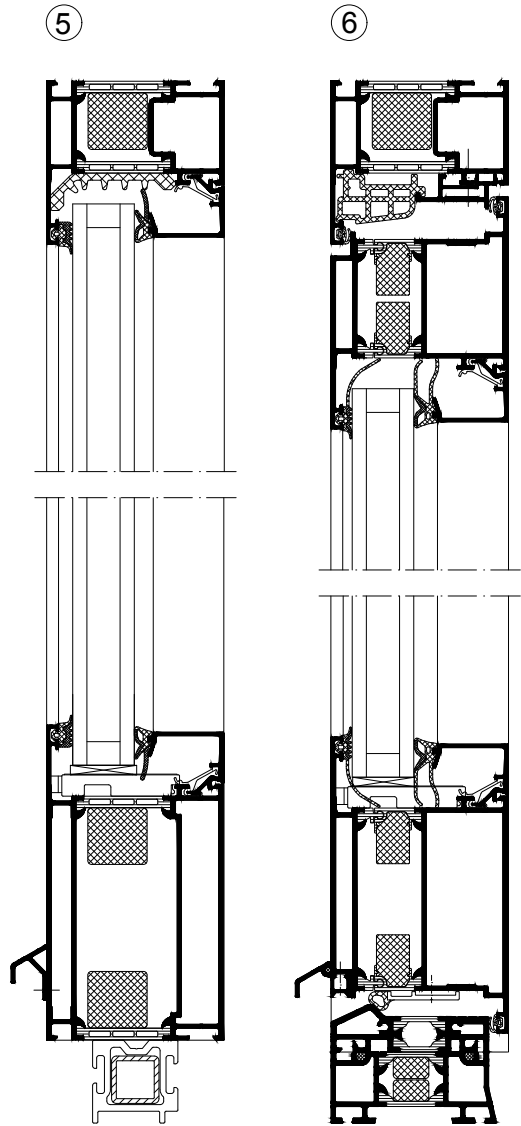
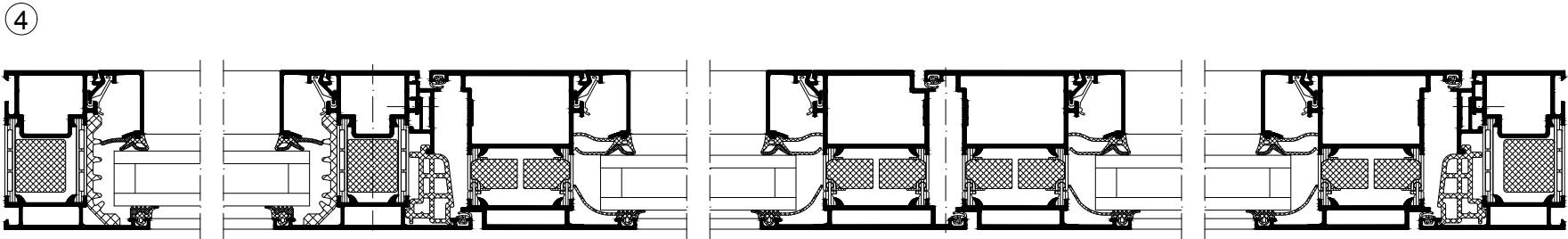
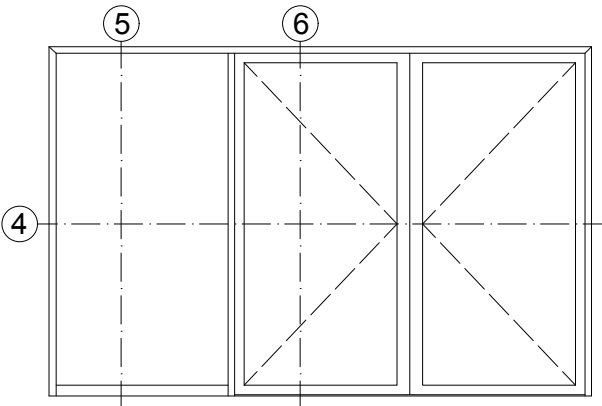
Elementschnitte
- Innen öffnend, flächenbündig
Unit section details
- Inward-opening, flush-fitted

AB2000253

0201

Schüco ADS 75 HD.HI

Zweiflügelige Tür mit Festfeld
Double-leaf door with fixed light



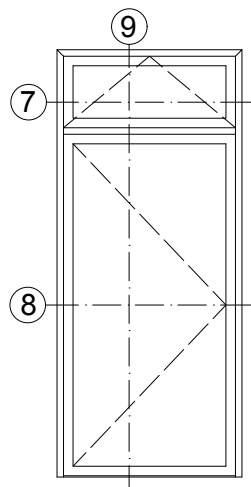
Elementschnitte
- Innen öffnend, flächenbündig
Unit section details
- Inward-opening, flush-fitted

AB2000254

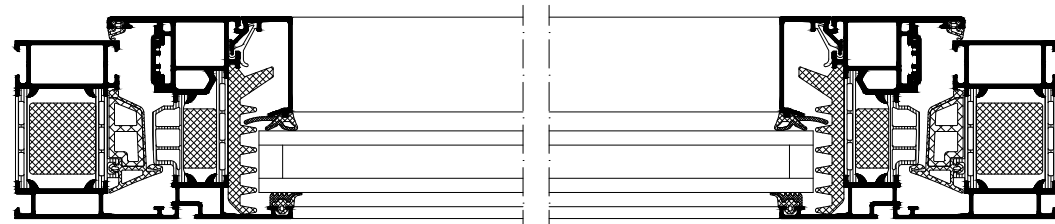
0201

Schüco ADS 75 HD.HI

Einflügelige Tür mit Oberlicht
Single-leaf door with toplight



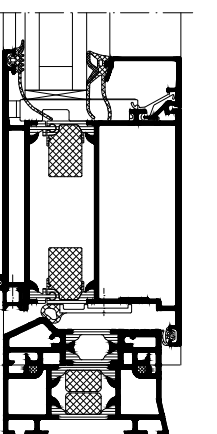
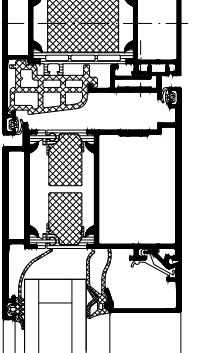
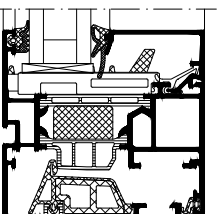
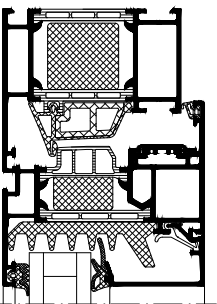
7



8



9



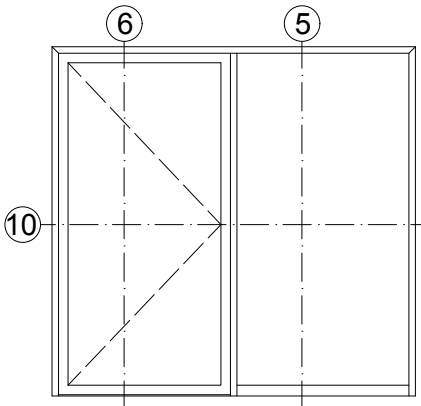
Elementschnitte
- Innen öffnend, flächenbündig
Unit section details
- Inward-opening, flush-fitted

AB2000255

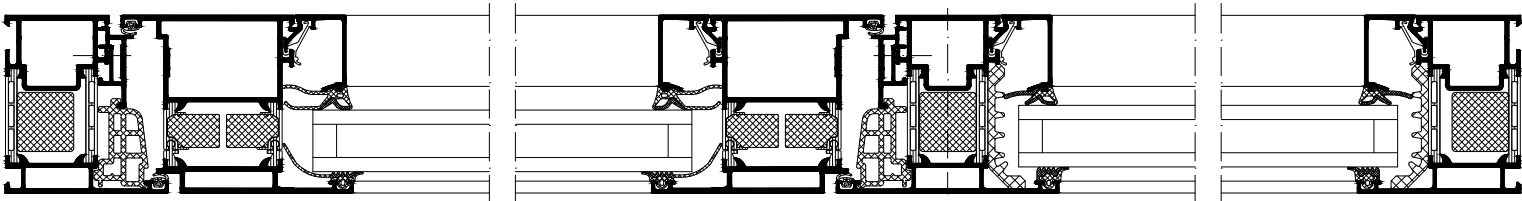
0201

Schüco ADS 75 HD.HI

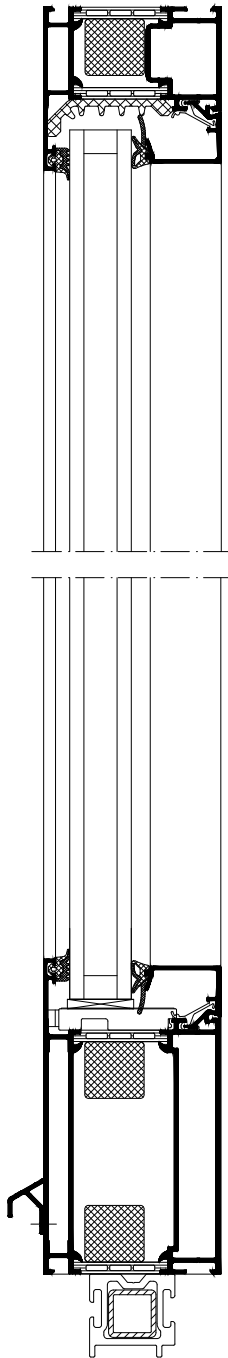
Einflügelige Tür mit Festfeld
Single-leaf door with fixed light



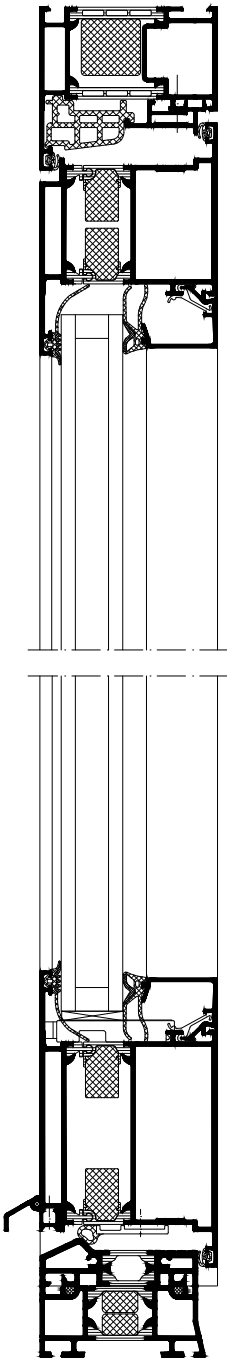
10



5



6



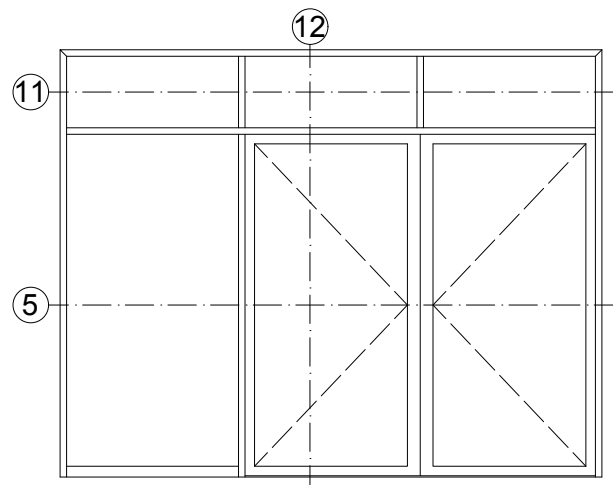
Elementschnitte
- Innen öffnend, flächenbündig
Unit section details
- Inward-opening, flush-fitted

AB2000256

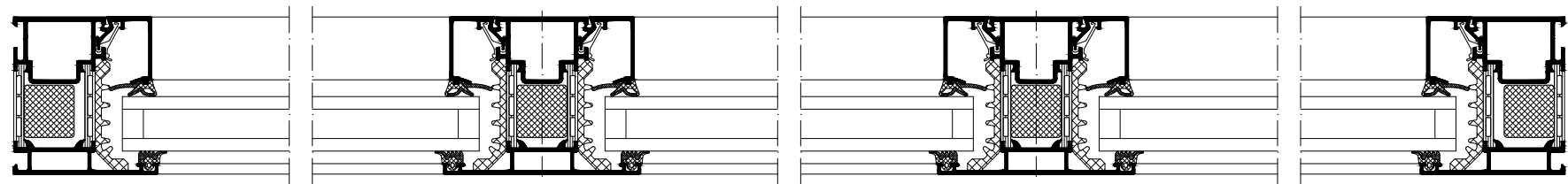
0201

Schüco ADS 75 HD.HI

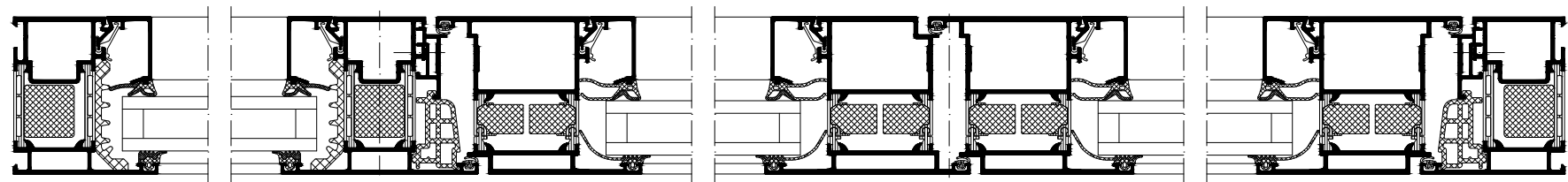
Zweiflügelige Tür mit Festfeld und Oberlicht
Double-leaf door with fixed light and toplight



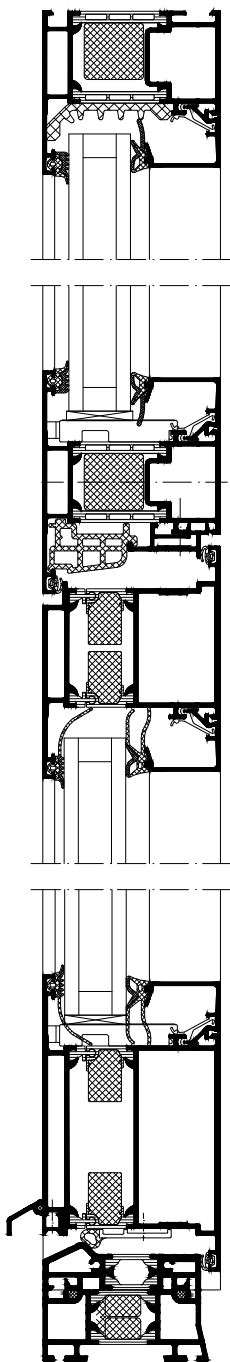
11



5



12

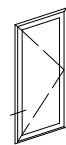


Elementschnitte
- Innen öffnend, flächenbündig
Unit section details
- Inward-opening, flush-fitted

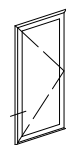
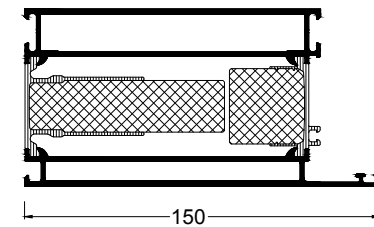
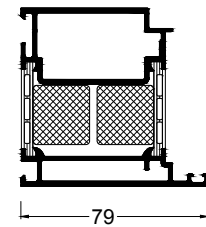
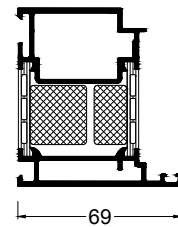
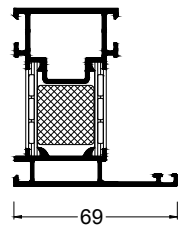
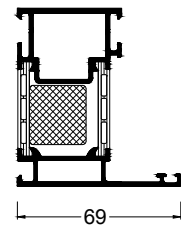
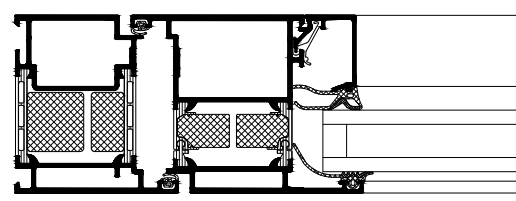
AB2000257

0201

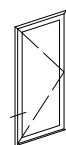
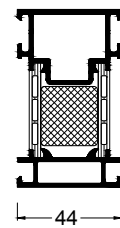
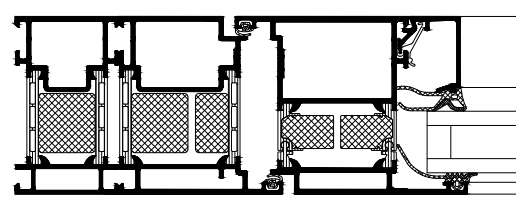
Schüco ADS 75 HD.HI



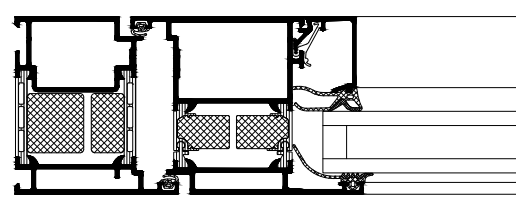
Blendrahmenprofil
Outer frame profile



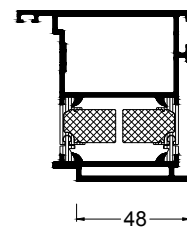
Blendrahmenverbreiterungsprofil
Outer frame extension profile



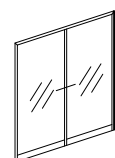
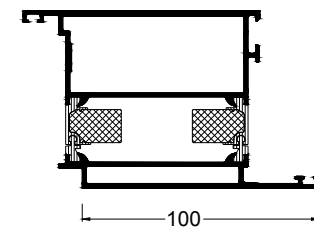
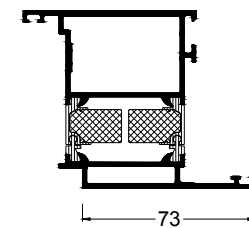
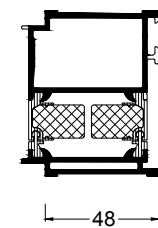
Flügelprofil
Leaf profile



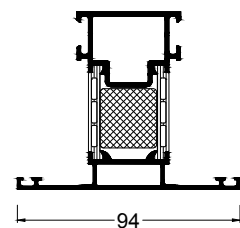
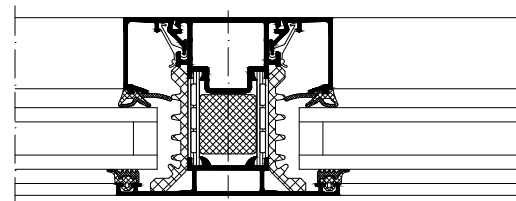
Flügelüberdeckend einseitig
Leaf-enclosing on one side



Flügelüberdeckend zweiseitig
Leaf-enclosing on two sides



Riegel / Pfosten
Transom/mullion

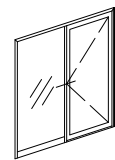


Profilsysteme
- Innen öffnend, flächenbündig
Profile systems
- Inward-opening, flush-fitted

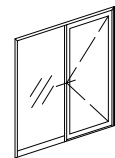
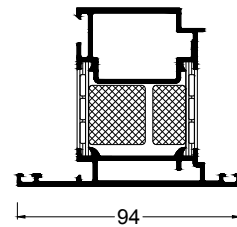
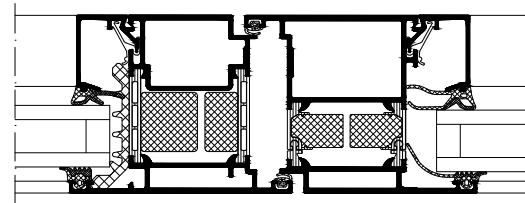
AB2000258

0201

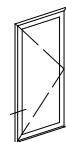
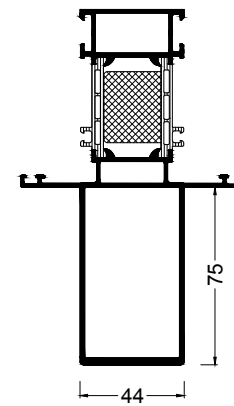
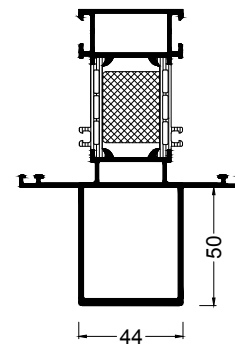
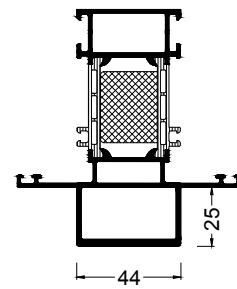
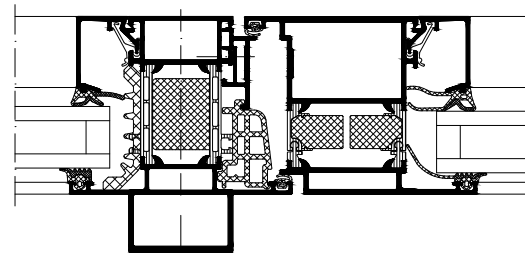
Schüco ADS 75 HD.HI



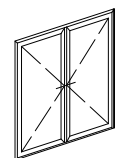
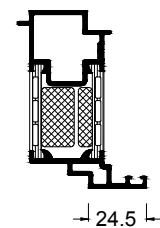
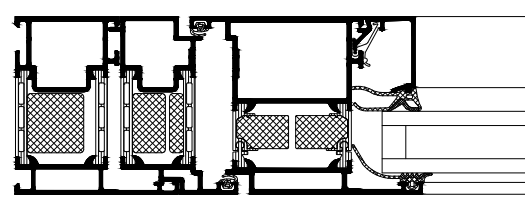
Türpfosten
Door mullion



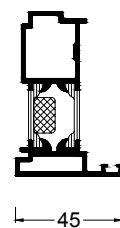
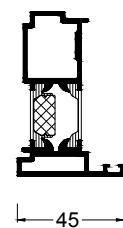
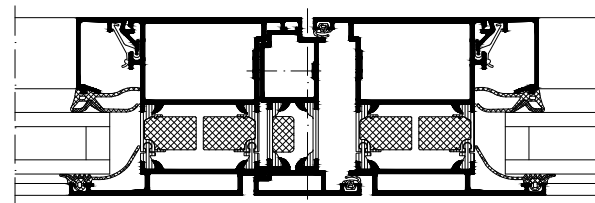
Statikpfosten
Structural mullion



Wechselprofil
Reverse rebate profile



Stulpprofil
Meeting stile profile



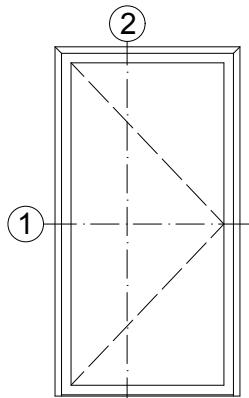
Profilsysteme
- Innen öffnend, flächenbündig
Profile systems
- Inward-opening, flush-fitted

AB2000259

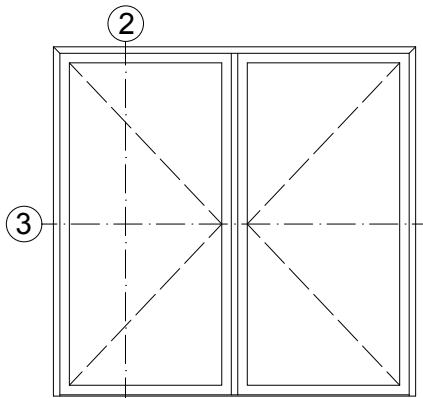
0201

Schüco ADS 75 HD.HI

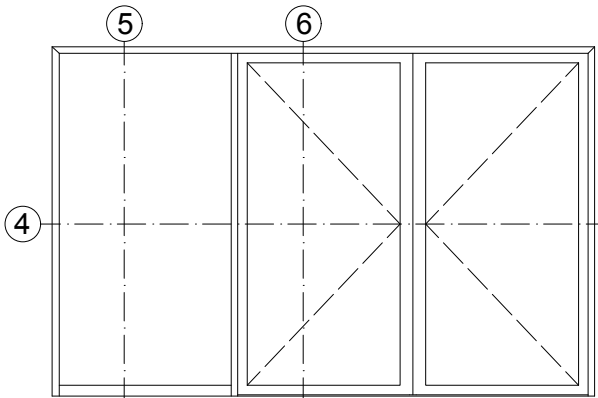
Einflügelige Tür
Single-leaf door



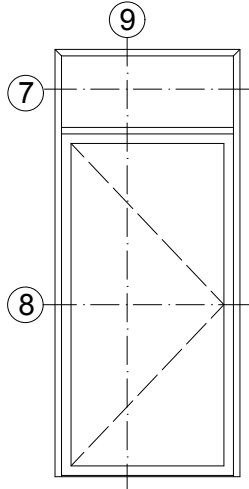
Zweiflügelige Tür
Double-leaf door



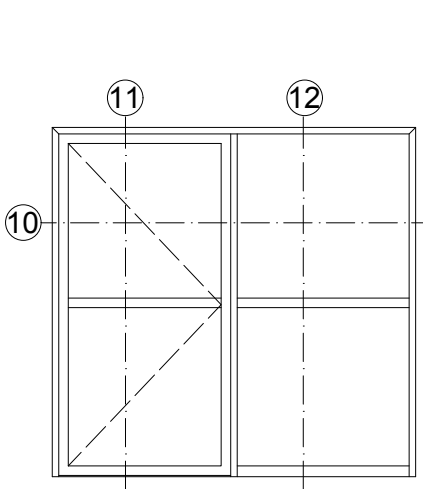
Zweiflügelige Tür mit Festfeld
Double-leaf door with fixed light



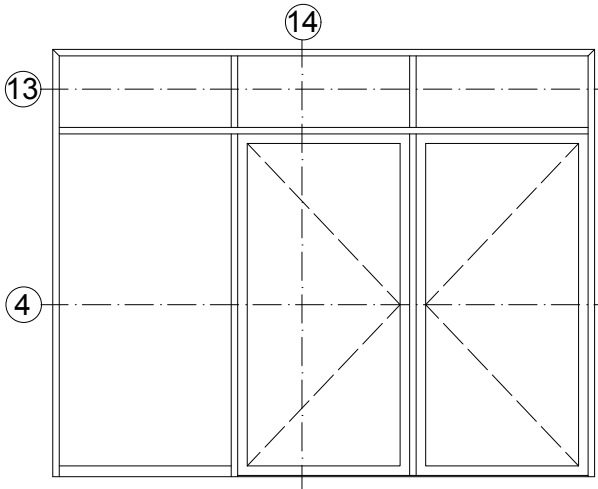
Einflügelige Tür mit Oberlicht
Single-leaf door with toplight



Einflügelige Tür mit Festfeld
Single-leaf door with fixed light



Zweiflügelige Tür mit Festfeld und Oberlicht
Double-leaf door with fixed light and toplight



Technische Informationen

Technical information

Prüfungen und Normen *	
Tests and standards	
Wärmedämmung nach DIN EN ISO 1077-2	Uf = 2,21 W/(m²K)
Thermal insulation in accordance with DIN EN ISO 1077-2	
Schalldämmung nach DIN EN ISO 140-3	bis Rw 43 dB
Sound reduction in accordance with DIN EN ISO 140-3	Up to Rw 43 dB
Einbruchhemmung nach DIN V ENV 1627	Klasse WK3
Burglar resistance in accordance with DIN V ENV 1627	Class WK3
Luftdurchlässigkeit nach DIN EN 12207	Klasse 2
Air permeability in accordance with DIN EN 12207	Class 2
Schlagregendichtheit nach DIN EN 12208	Klasse 5A
Watertightness in accordance with DIN EN 12208	Class 5A
Windlastwiderstand nach DIN EN 12210	Klasse 2
Wind load resistance in accordance with DIN EN 12210	Class 2
Mechanische Beanspruchung nach DIN EN 13115	Klasse 2
Mechanical loading in accordance with DIN EN 13115	Class 2
Dauerfunktion nach DIN EN 12400	Klasse 6
Durability in accordance with DIN EN 12400	Class 6

* Die Angaben beschreiben die Bestwerte des Gesamtsystems bei innen als auch außen öffnenden Ausführungen. Die Eigenschaften einer jeweils gewählten Ausführungsvariante oder Elementkombination sind im Einzelfall anhand der ausführlichen Prüfdokumentation zu bestimmen.

The information describes the optimum values of the entire system for both inward and outward-opening designs. The properties of a selected design option or unit combination have to be determined individually based on the comprehensive test documentation.

Elementbeispiele
- Innen öffnend, aufschlagend

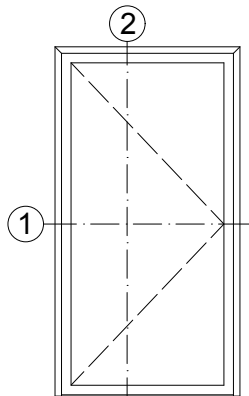
Unit examples
- Inward-opening, face-fitted

AB2000271

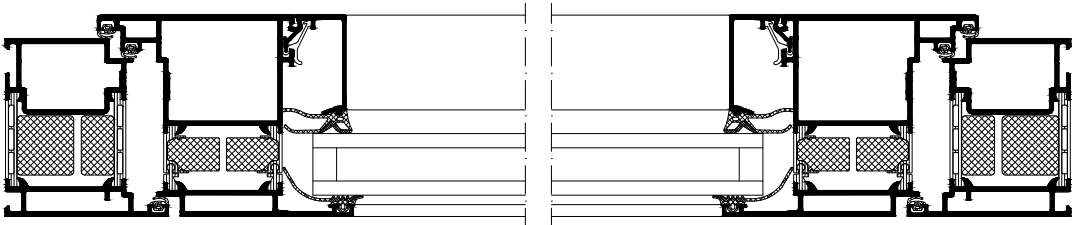
0201

Schüco ADS 75 HD.HI

Einflügelige Tür
Single-leaf door

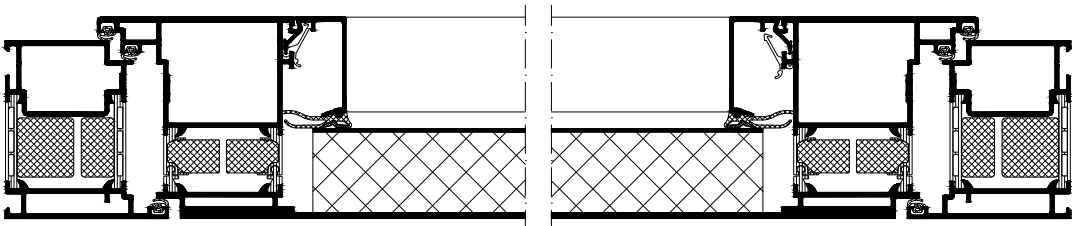


①



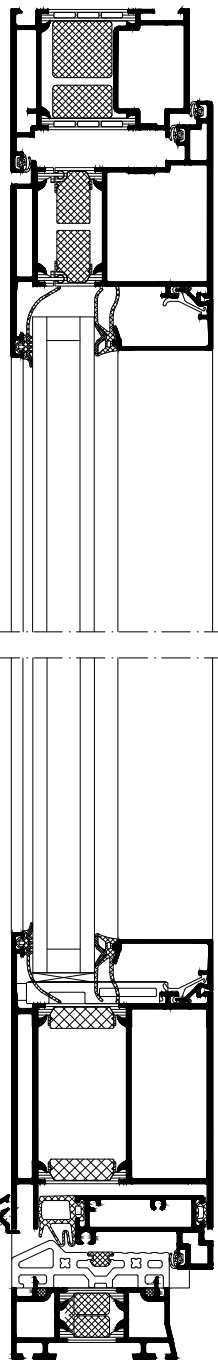
①

Flügelüberdeckend
Leaf-enclosing

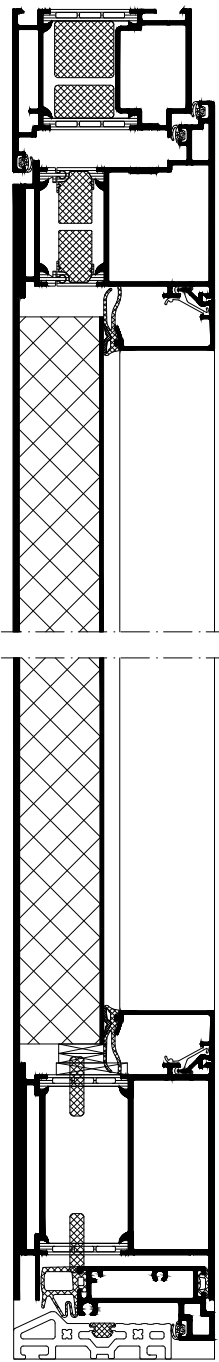


Flügelüberdeckend
Leaf-enclosing

②



②



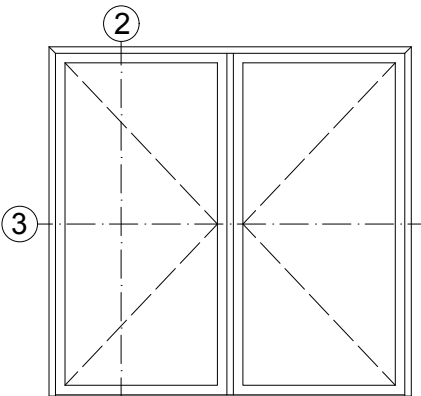
Elementschnitte
- Innen öffnend, aufschlagend
Unit section details
- Inward-opening, face-fitted

AB2000272

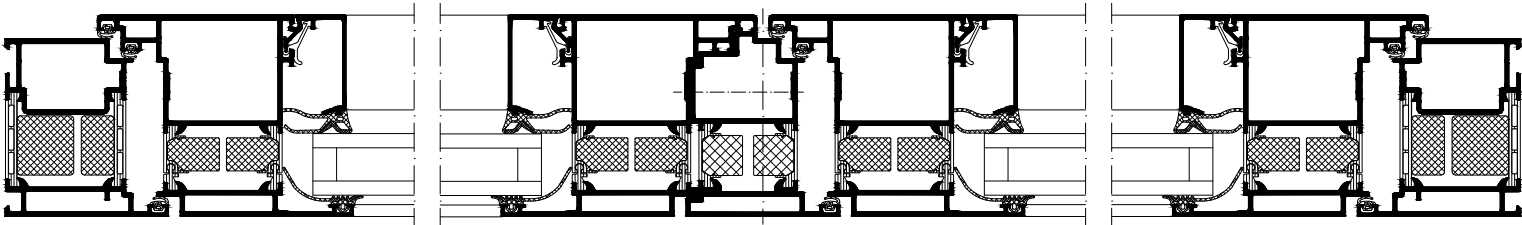
0201

Schüco ADS 75 HD.HI

Zweiflügelige Tür
Double-leaf door

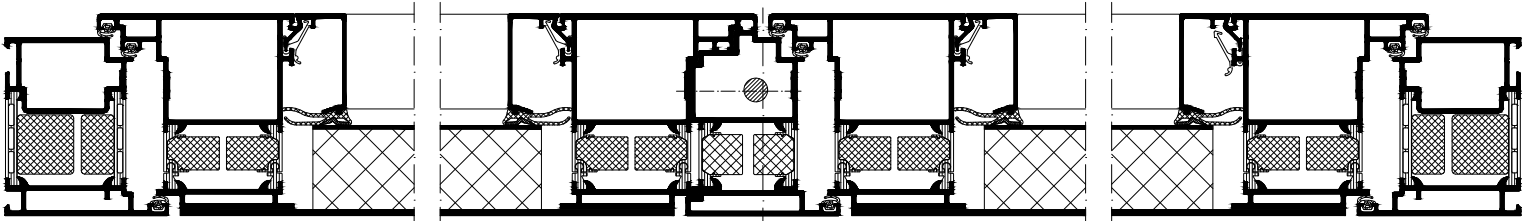


3



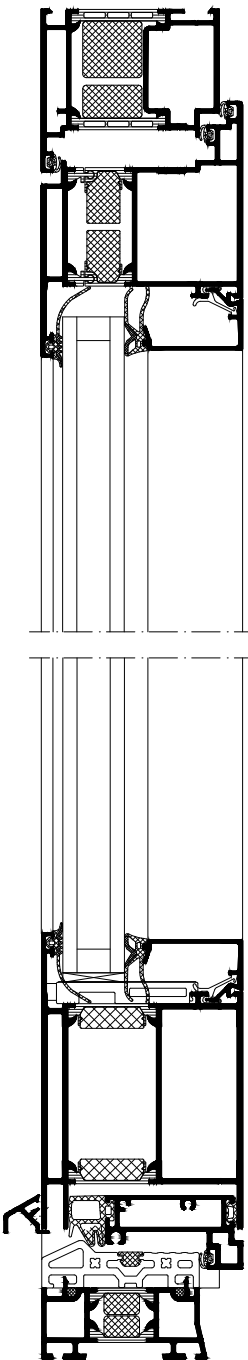
3

Flügelüberdeckend
Leaf-enclosing

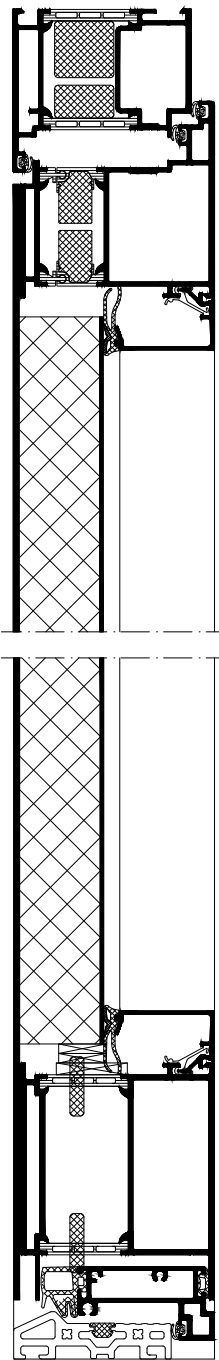


Flügelüberdeckend
Leaf-enclosing

2



2



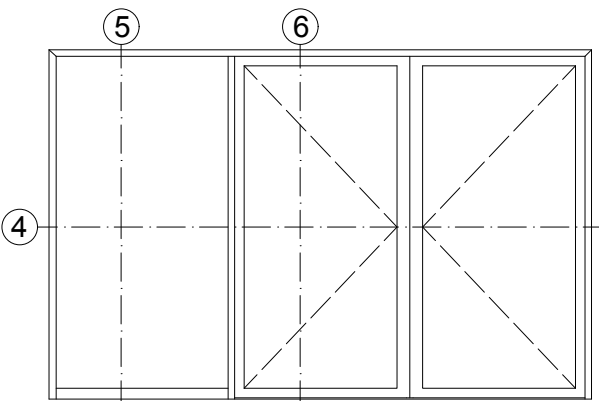
Elementschnitte
- Innen öffnend, aufschlagend
Unit section details
- Inward-opening, face-fitted

AB2000273

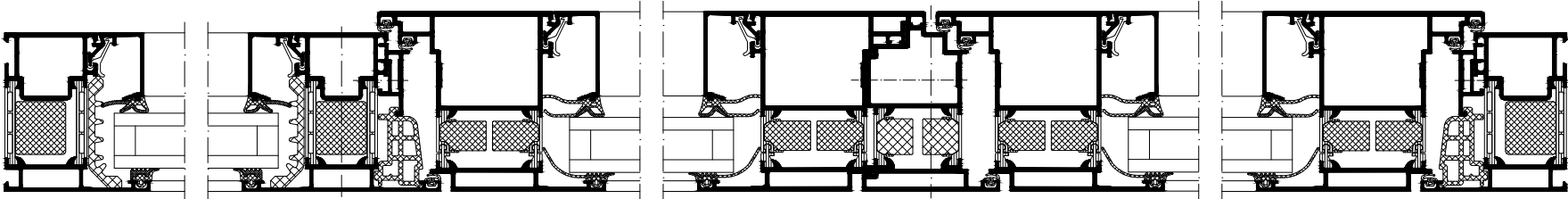
0201

Schüco ADS 75 HD.HI

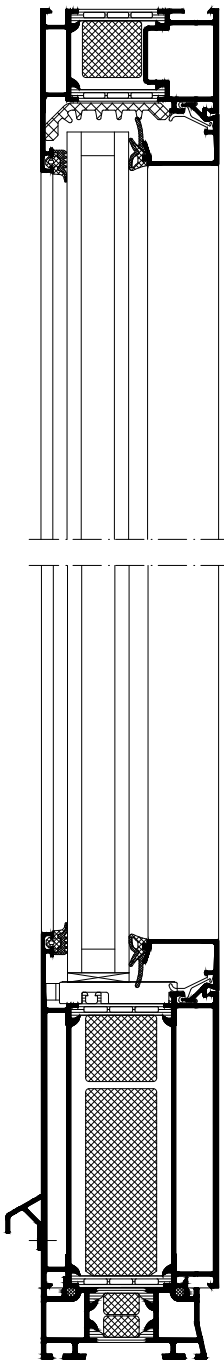
Zweiflügelige Tür mit Festfeld
Double-leaf door with fixed light



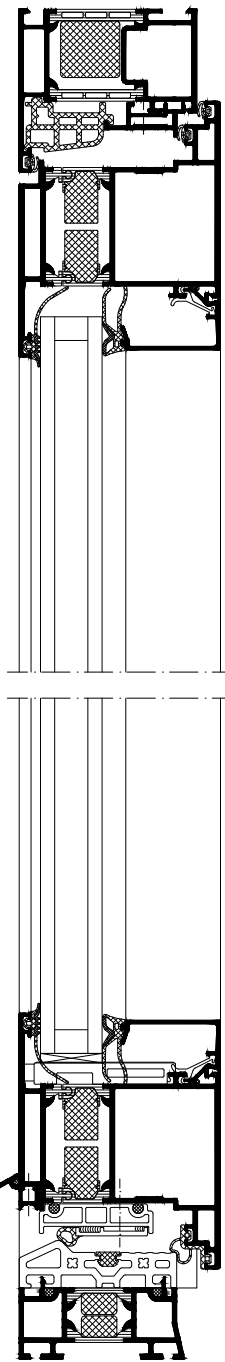
④



⑤



⑥



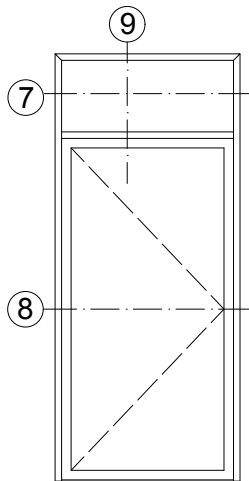
Elementschnitte
- Innen öffnend, aufschlagend
Unit section details
- Inward-opening, face-fitted

AB2000274

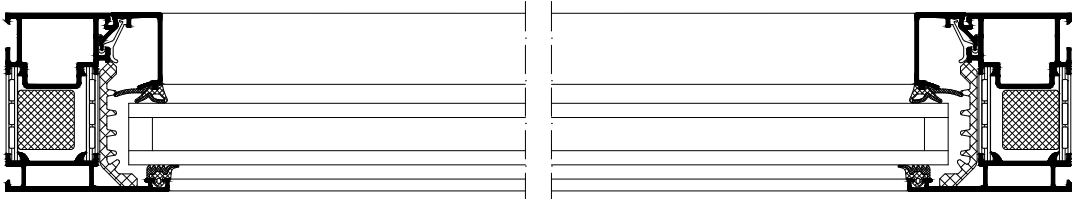
0201

Schüco ADS 75 HD.HI

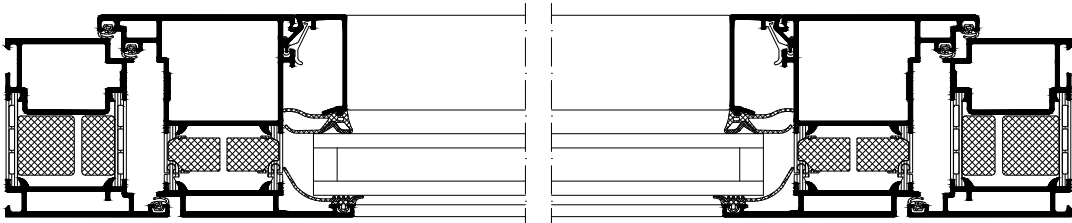
Einflügelige Tür mit Oberlicht
Single-leaf door with toplight



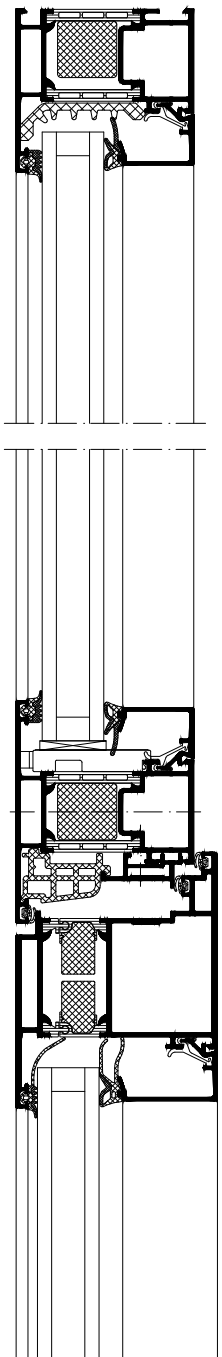
7



8



9



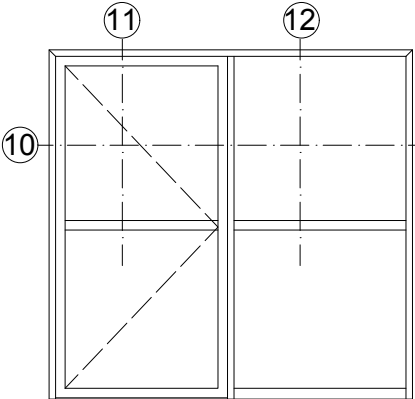
Elementschnitte
- Innen öffnend, aufschlagend
Unit section details
- Inward-opening, face-fitted

AB2000275

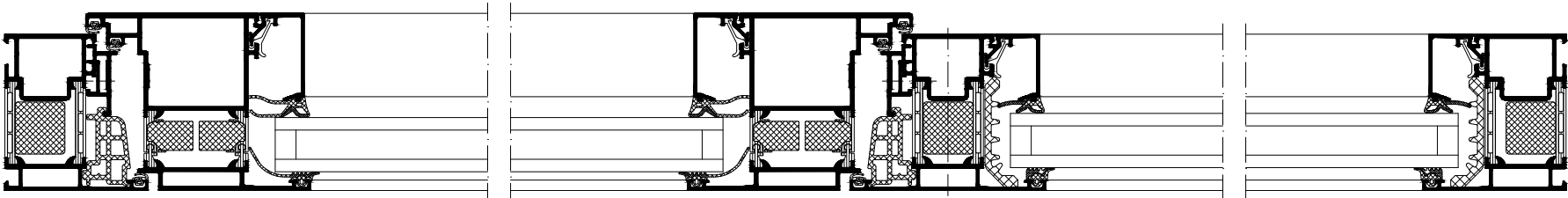
0201

Schüco ADS 75 HD.HI

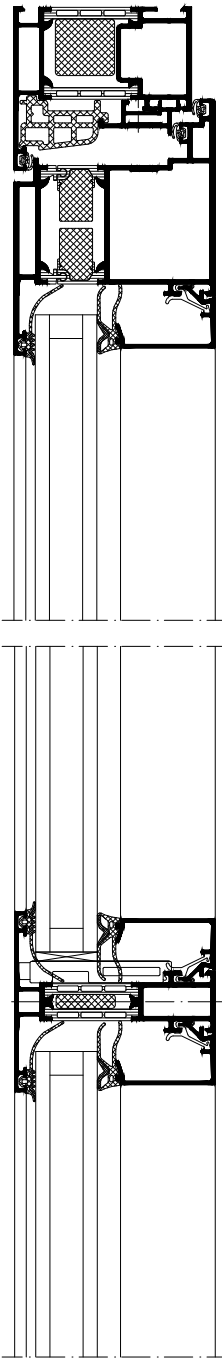
Einflügelige Tür mit Festfeld
Single-leaf door with fixed light



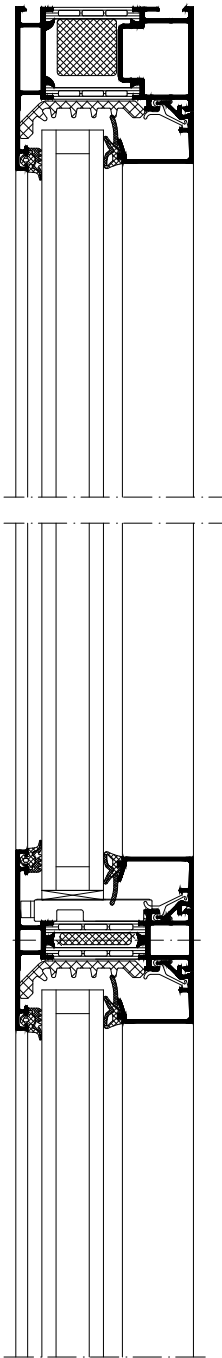
10



11



12



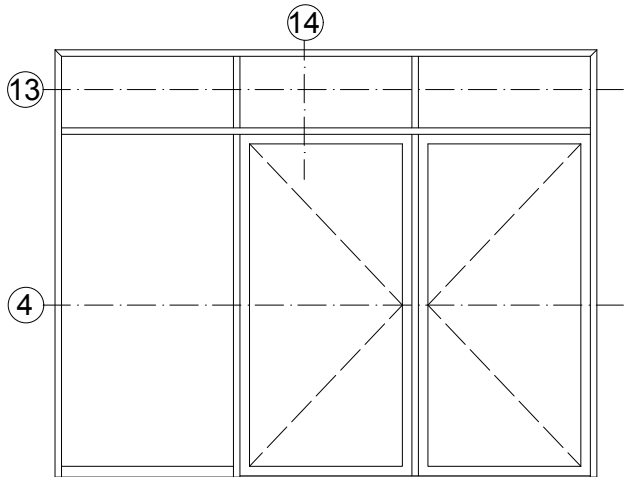
Elementschnitte
- Innen öffnend, aufschlagend
Unit section details
- Inward-opening, face-fitted

AB2000276

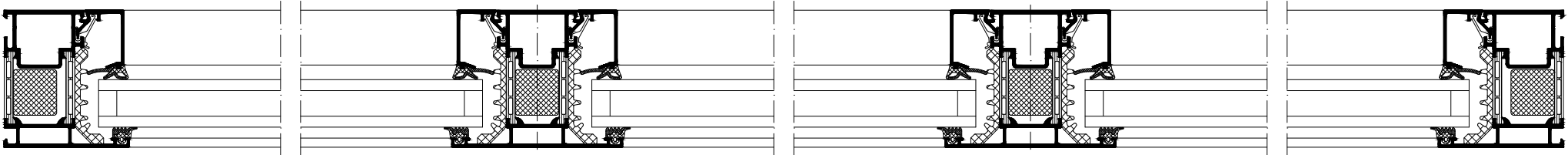
0201

Schüco ADS 75 HD.HI

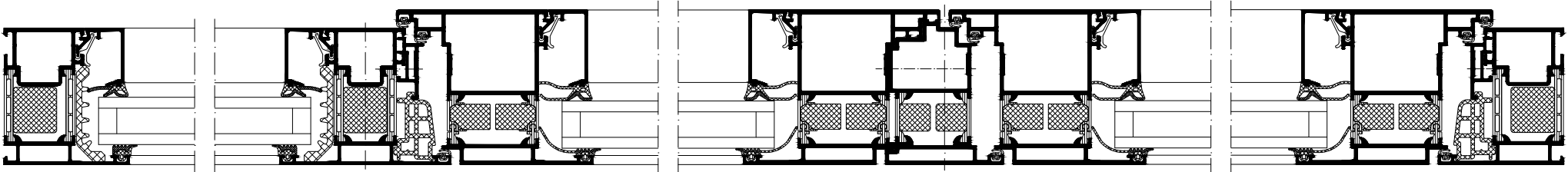
Zweiflügelige Tür mit Festfeld und Oberlicht
Double-leaf door with fixed light and toplight



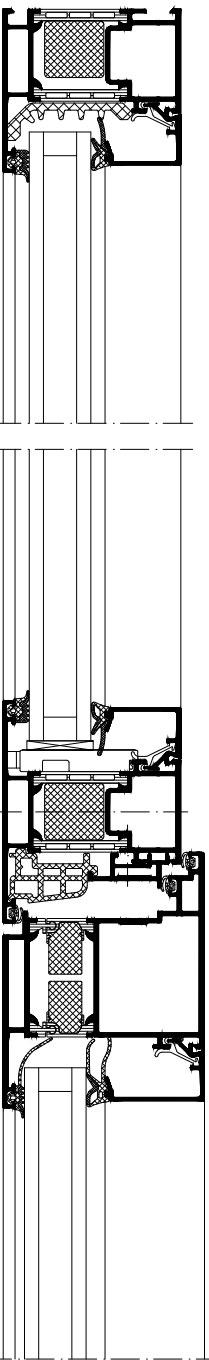
13



4



14

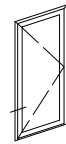


Elementschnitte
- Innen öffnend, aufschlagend
Unit section details
- Inward-opening, face-fitted

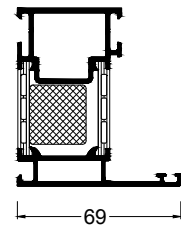
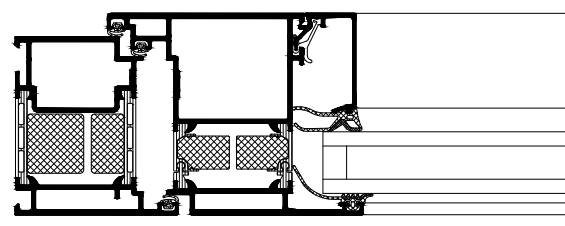
AB2000277

0201

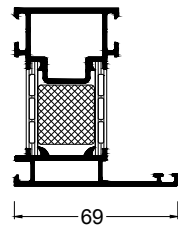
Schüco ADS 75 HD.HI



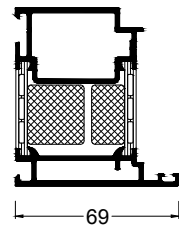
Blendrahmenprofil
Outer frame profile



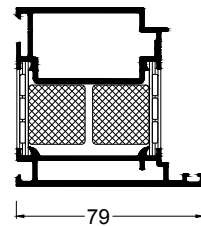
69



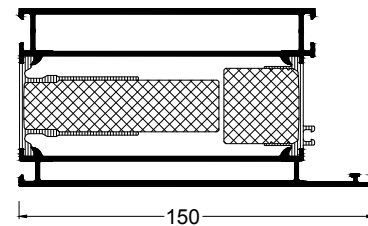
69



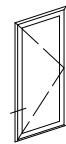
69



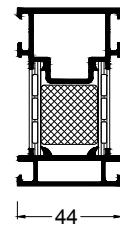
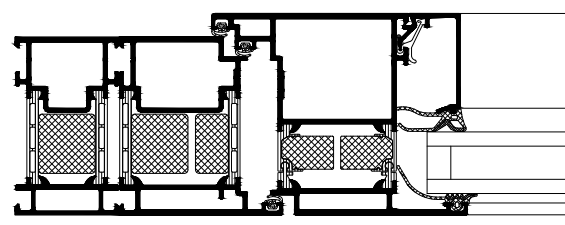
79



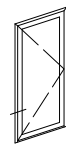
150



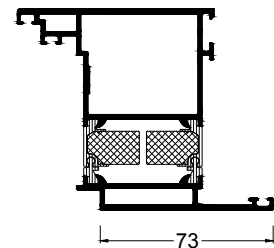
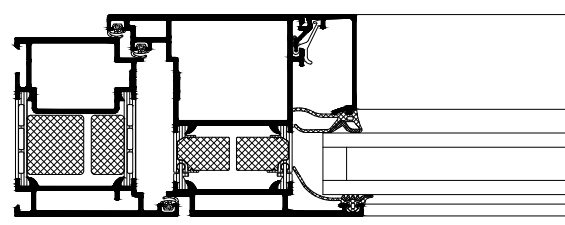
Blendrahmenverbreiterungsprofil
Outer frame extension profile



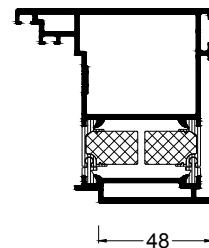
44



Flügelprofil
Leaf profile

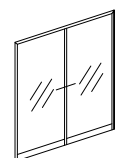


73

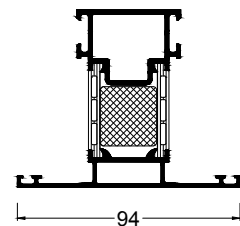
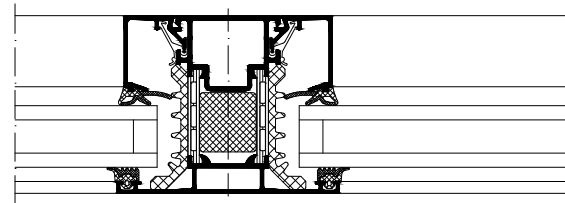


48

Flügelüberdeckend einseitig
Leaf-enclosing on one side



Riegel / Pfosten
Transom/mullion



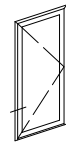
94

Profilsysteme
- Innen öffnend, aufschlagend
Profile systems
- Inward-opening, face-fitted

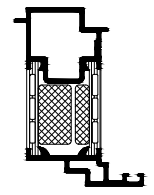
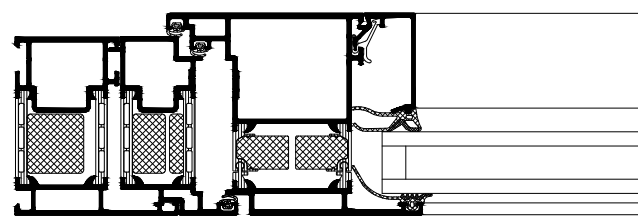
AB2000278

0201

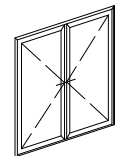
Schüco ADS 75 HD.HI



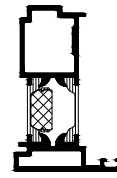
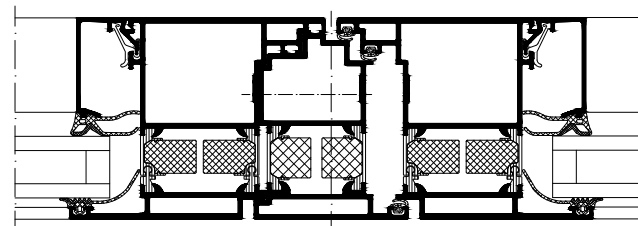
Wechselprofil
Reverse rebate profile



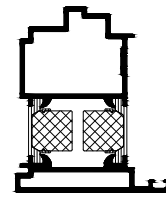
24.5



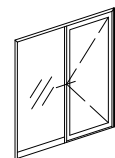
Stulpprofil
Meeting stile profile



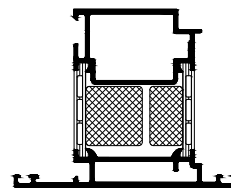
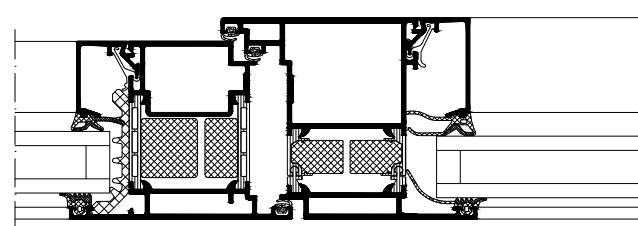
45



65



Türpfosten
Door mullion



94

Profilsysteme
- Innen öffnend, aufschlagend
Profile systems
- Inward-opening, face-fitted

AB2000279

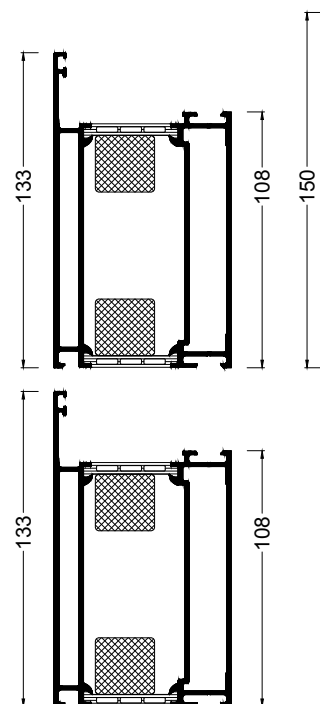
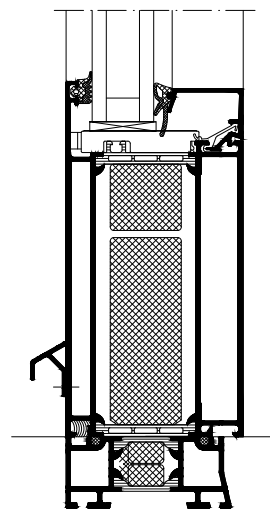
0201

Schüco ADS 75 HD.HI

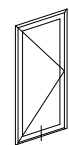
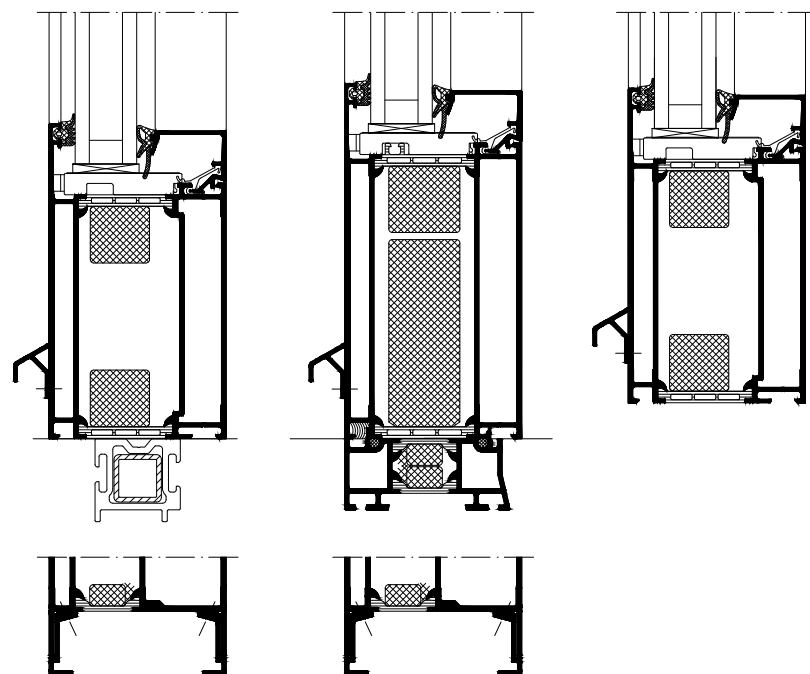


Profile
Profiles

Sockel Festfeld
Sill, fixed light

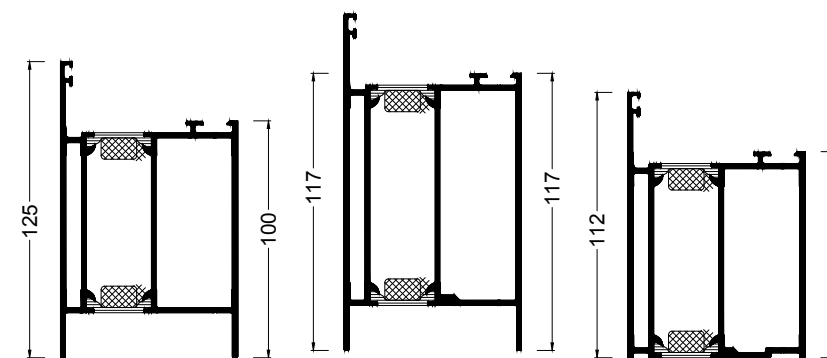
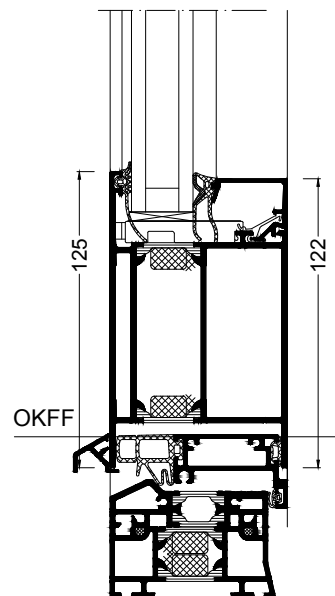


Varianten
Options

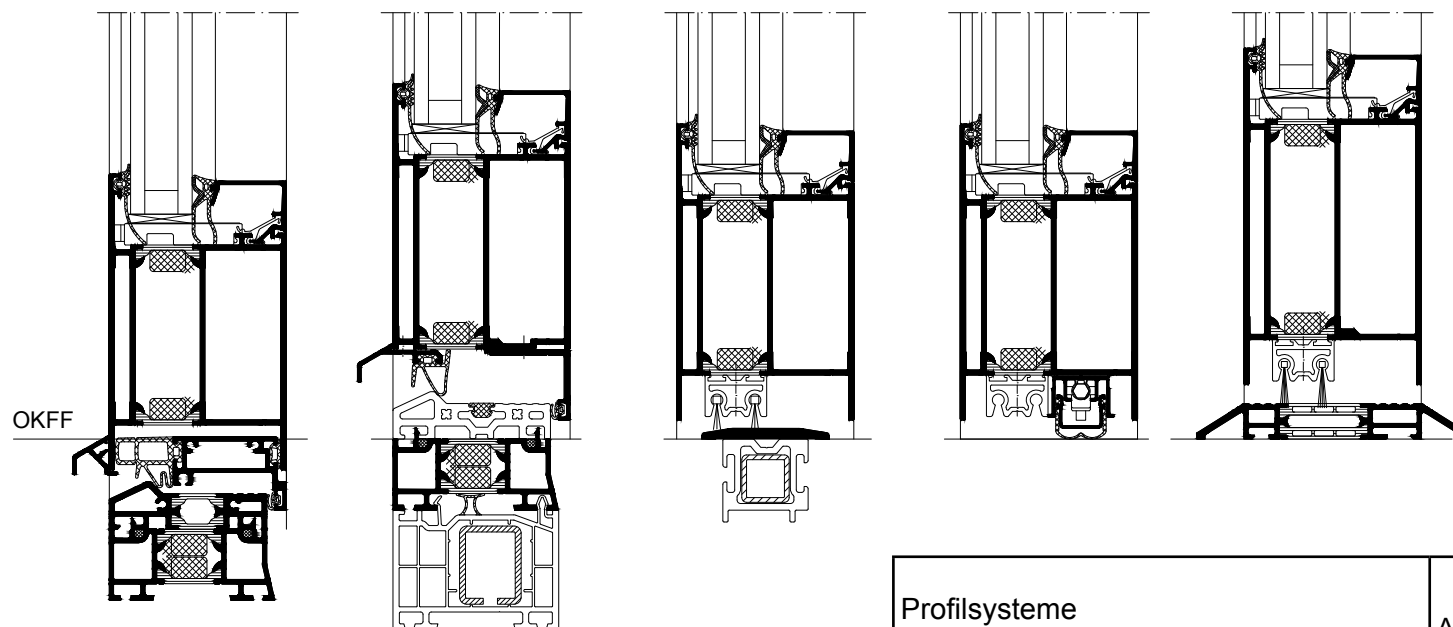


Profile
Profiles

Sockel Öffnungselement
Sill, opening unit



Varianten
Options



Profilsysteme
- Innen öffnend, aufschlagend
Profile systems
- Inward-opening, face-fitted

AB2000280

0201

Schüco ADS 75 HD.HI

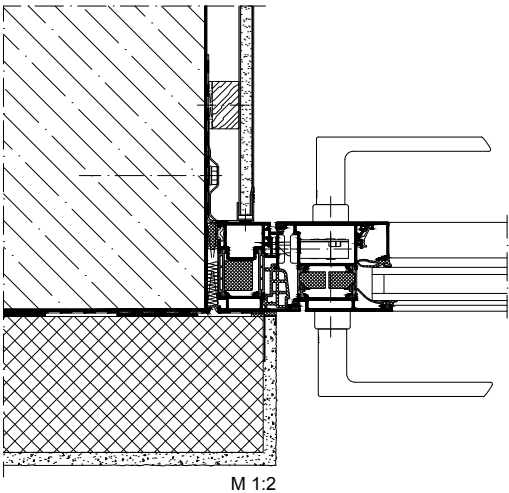
Wand mit WDVS
Wall with composite
thermal insulation
system

Oberer Anschluss
Top attachment



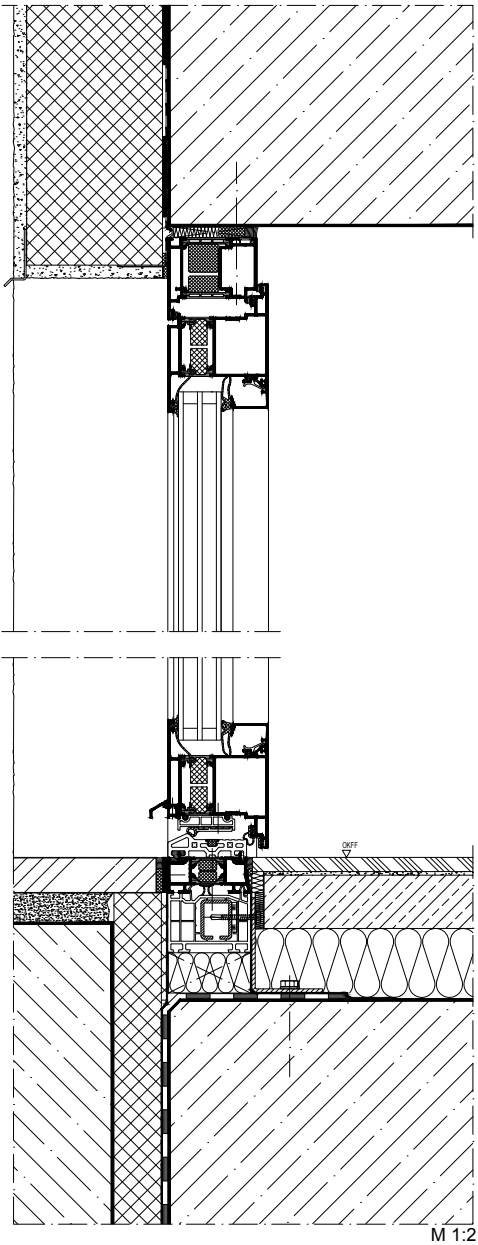
Unterer Anschluss
Bottom attachment

Seitlicher Anschluss
Side attachment



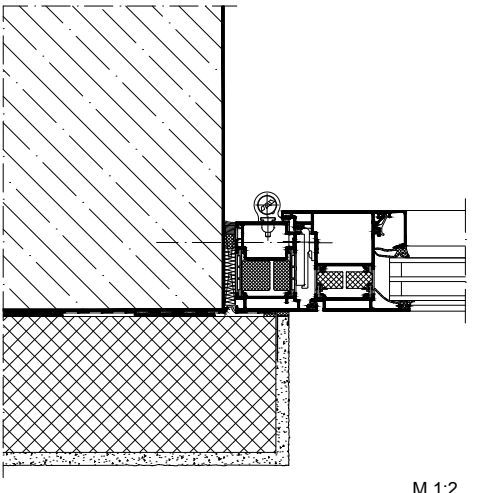
Wand mit WDVS
Wall with composite
thermal insulation
system

Oberer Anschluss
Top attachment



Unterer Anschluss
Bottom attachment

Seitlicher Anschluss
Side attachment



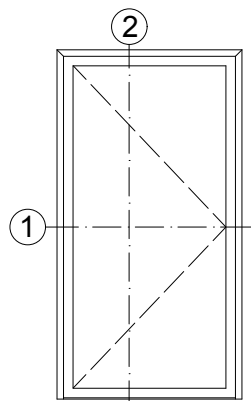
Baukörperanschlüsse
- Innen öffnend, aufschlagend
Attachments to building structure
- Inward-opening, face-fitted

Schüco ADS 75 HD.HI

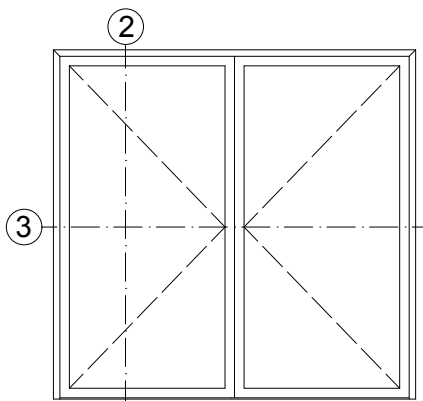
AB2000281

0201

Einflügelige Tür
Single-leaf door



Zweiflügelige Tür
Double-leaf door



Elementbeispiele - Innen öffnend mit
Klemmschutz

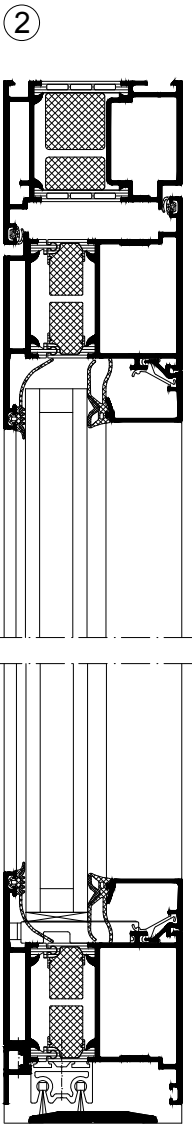
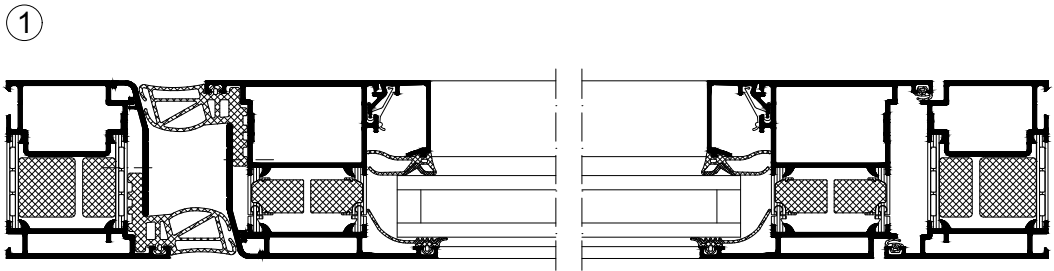
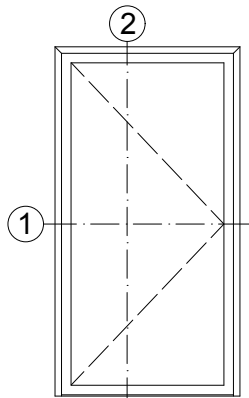
Unit examples - Inward-opening with
finger-trap protection

Schüco ADS 75 HD.HI

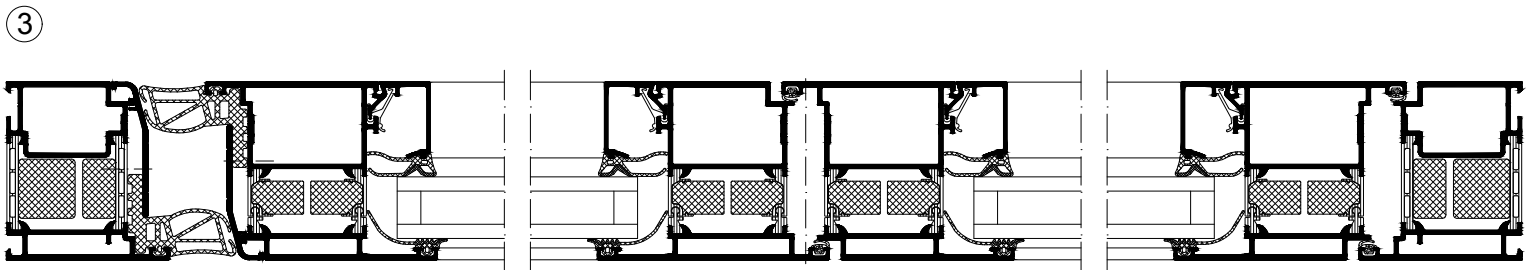
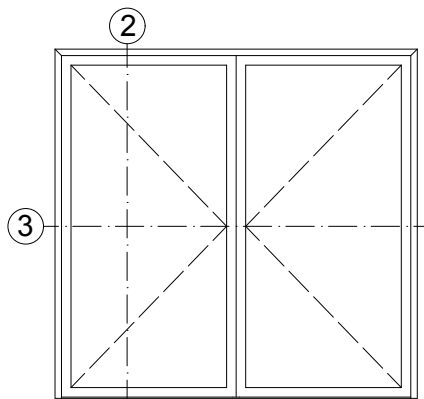
AB2000282

0201

Einflügelige Tür
Single-leaf door



Zweiflügelige Tür
Double-leaf door



Elementschnitte - Innen öffnend mit
Klemmschutz
Unit section details - Inward-opening
with finger-trap protection

AB2000283

0201

Schüco ADS 75 HD.HI