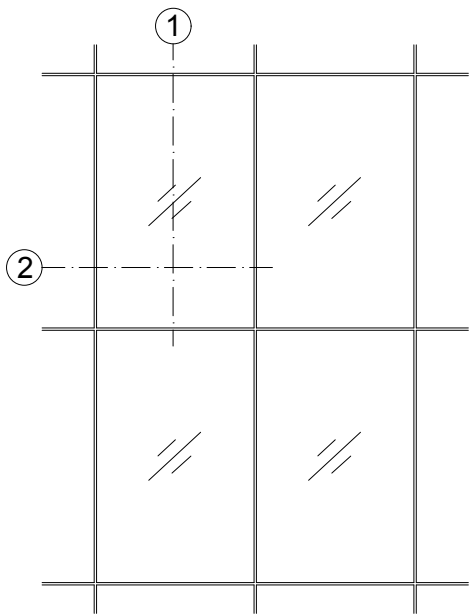
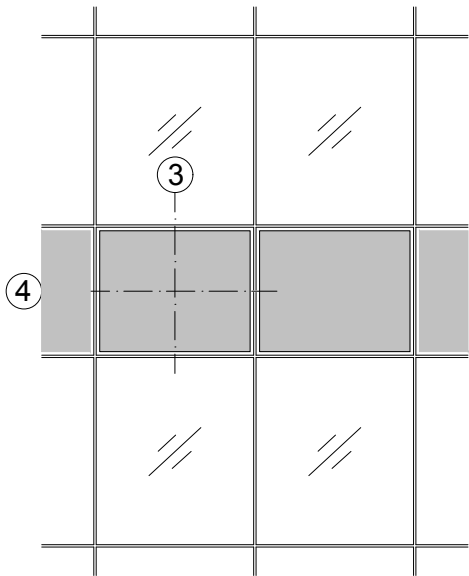


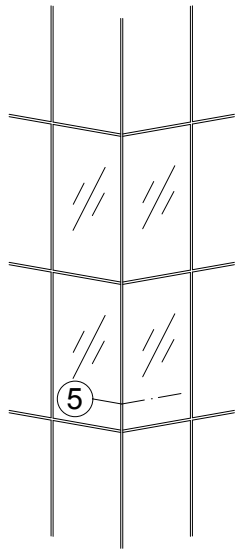
Festverglasung
Fixed glazing



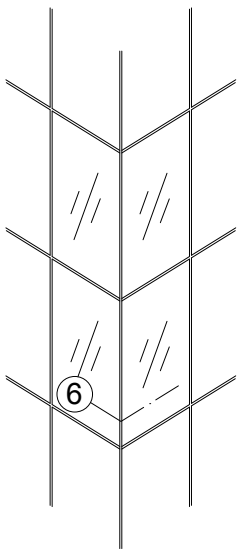
Brüstungspaneel /-verglasung
Spandrel panel / glazing



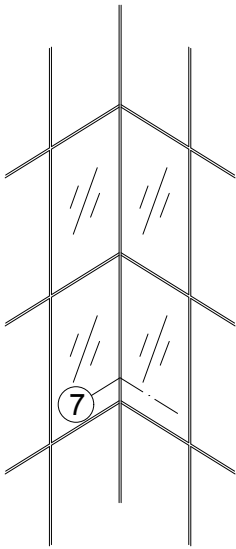
Segmentierung
Faceting



90° Außenecke
90° outer corner



90° Innenecke
90° inner corner



Technische Informationen FW 50+SG
Technical information about FW 50+SG

Prüfungen und Normen ** Tests and standards	
Luftschalldämmung nach EN ISO 717-1 Airborne sound insulation in accordance with EN ISO 717-1	43 bis 44 dB 43 to 44 dB
Wärmedämmung nach DIN EN ISO 10077-2 Thermal insulation in accordance with DIN EN ISO 10077-2	Uf = 0,91 - 2,8 W/(m²K)
Luftdurchlässigkeit nach DIN EN 12153 * Air permeability in accordance with DIN EN 12153	Klasse AE Class AE
Schlagregendichtheit nach DIN EN 12155 Watertightness in accordance with DIN EN 12155	Klasse RE 1200 Class RE 1200
Windlastwiderstand nach EN 12179 (Nennlast) Wind load resistance in accordance with EN 12179 (nominal load)	+/- 2,0 kN/m²
Windlastwiderstand nach EN 12179 (Sicherheitslast) Wind load resistance in accordance with EN 12179 (safety load)	+/- 3,0 kN/m²
Stoßfestigkeit DIN EN 14019, Belastung von innen / außen Impact resistance DIN EN 14019, load from inside / outside	Klasse I5 / E5 Class I5 / E5
Einbruchhemmung DIN EN V 1627 Burglar resistance - DIN EN V 1627	Klasse RC2 Class RC 2

* Objektbezogener Nachweis - wenn erforderlich
Project-specific certification – if necessary

** Die Angaben beschreiben die Bestwerte des Gesamtsystems.
Die Eigenschaften einer jeweils gewählten Ausführungsvariante oder
Elementkombination sind im Einzelfall anhand der ausführlichen
Prüfdokumentation zu bestimmen.
The information describes the optimum values of the entire system.
The properties of a selected design option or unit combination have to be determined
individually based on the comprehensive test documentation.

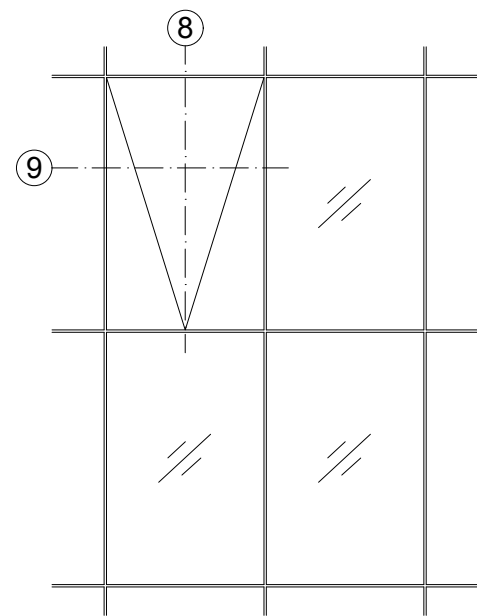
Elementbeispiele - Pfosten / Riegel
Unit examples - Mullion / transom

AB1000288

0302

Schüco FWS 50 SG

Einsatzelement AWS 102 SG
AWS 102 SG insert unit



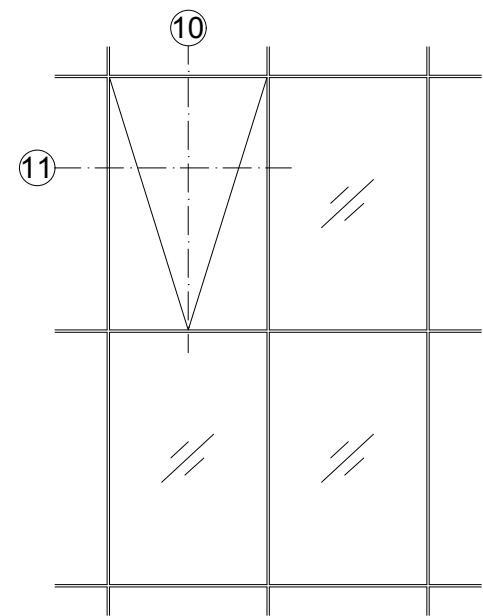
Elementbeispiele - Pfosten / Riegel
Unit examples - Mullion / transom

AB1000289

0302

Schüco FWS 50 SG

Einsatzelement AWS 114 SG
AWS 114 SG insert unit



Technische Informationen AWS 114 SG
Technical information about AWS 114 SG

Prüfungen und Normen **	
Tests and standards	
Luftschalldämmung nach EN ISO 717-1	37 bis 43 dB
Airborne sound insulation in accordance with EN ISO 717-1	37 to 43 dB
Wärmedämmung nach DIN EN ISO 10077-2	Uf = 1,8 - 2,8 W/(m²K)
Thermal insulation in accordance with DIN EN ISO 10077-2	
Luftdurchlässigkeit nach DIN EN 12207 *	Klasse 4
Air permeability in accordance with DIN EN 12207	Class 4
Schlagregendichtheit nach DIN EN 12208	Klasse E 1200
Watertightness in accordance with DIN EN 12208	Class E 1200
Windlastwiderstand nach EN 12210	Klasse C5 / B5
Wind load resistance in accordance with EN 12210	Class C5 / B5
Stoßfestigkeit nach EN 13049	Klasse 4
Impact resistance in accordance with EN 13049	Class 4
Einbruchhemmung nach DIN EN V 1627	Klasse RC2
Burglar resistance in accordance with DIN EN V 1627	Class RC 2

* Objektbezogener Nachweis - wenn erforderlich
Project-specific certification – if necessary

** Die Angaben beschreiben die Bestwerte des Gesamtsystems.
Die Eigenschaften einer jeweils gewählten Ausführungsvariante oder
Elementkombination sind im Einzelfall anhand der ausführlichen
Prüfdokumentation zu bestimmen.
The information describes the optimum values of the entire system.
The properties of a selected design option or unit combination have to be determined
individually based on the comprehensive test documentation.

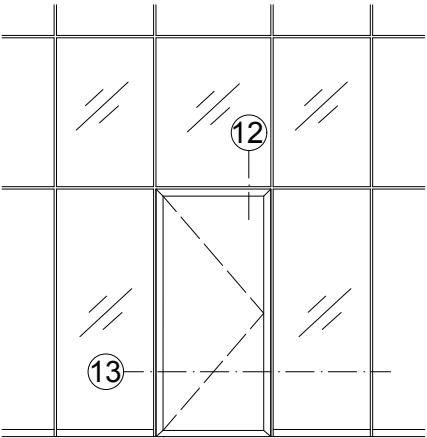
Elementbeispiele - Pfosten / Riegel
Unit examples - Mullion / transom

AB1000290

0302

Schüco FWS 50 SG

Einsatzelement ADS 65 SG
ADS 65 SG insert unit



Technische Informationen ADS 65
Technical information about ADS 65

Prüfungen und Normen *	
Tests and standards	
Schalldämmung nach DIN EN ISO 140-3	bis Rw 43 dB
Sound reduction in accordance with DIN EN ISO 140-3	Up to Rw 43 dB
Einbruchhemmung nach DIN V ENV 1627	bis WK3
Burglar resistance in accordance with DIN V ENV 1627	Up to WK3
Luftdurchlässigkeit nach DIN EN 12207	bis Klasse 2
Air permeability in accordance with DIN EN 12207	Up to class 2
Schlagregendichtheit nach DIN EN 12208	bis Klasse 5A
Watertightness in accordance with DIN EN 12208	Up to class 5A
Windlastwiderstand nach DIN EN 12210	bis Klasse C3
Wind load resistance in accordance with DIN EN 12210	Up to class C3
Mechanische Beanspruchung nach DIN EN 13115	Klasse 3
Mechanical loading in accordance with DIN EN 13115	Class 3
Dauerfunktion nach DIN EN 12400	Klasse 5
Durability in accordance with DIN EN 12400	Class 5
* Die Angaben beschreiben die Bestwerte des Gesamtsystems bei innen als auch außen öffnenden Ausführungen. Die Eigenschaften einer jeweils gewählten Ausführungsvariante oder Elementkombination sind im Einzelfall anhand der ausführlichen Prüfdokumentation zu bestimmen. The information describes the optimum values of the entire system for both inward and outward-opening designs. The properties of a selected design option or unit combination have to be determined individually based on the comprehensive test documentation.	

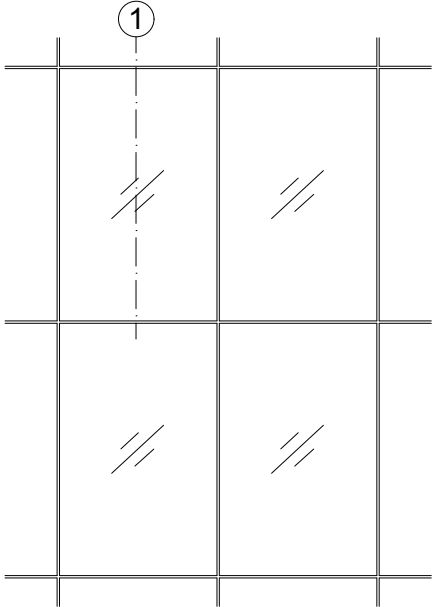
Elementbeispiele - Pfosten / Riegel
Unit examples - Mullion / transom

AB1000291

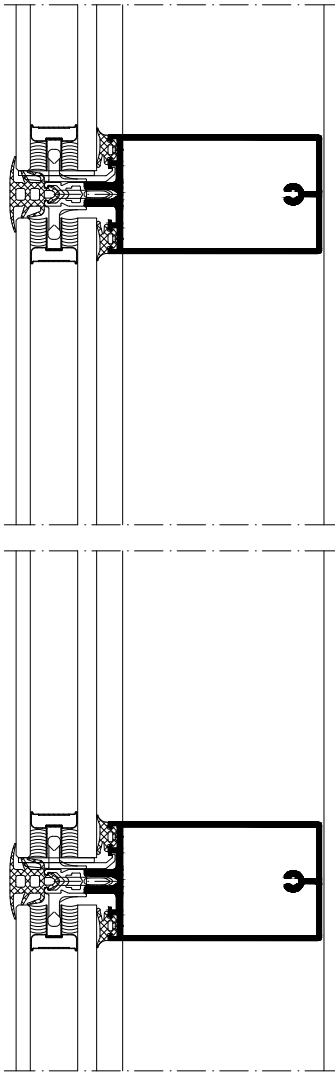
0302

Schüco FWS 50 SG

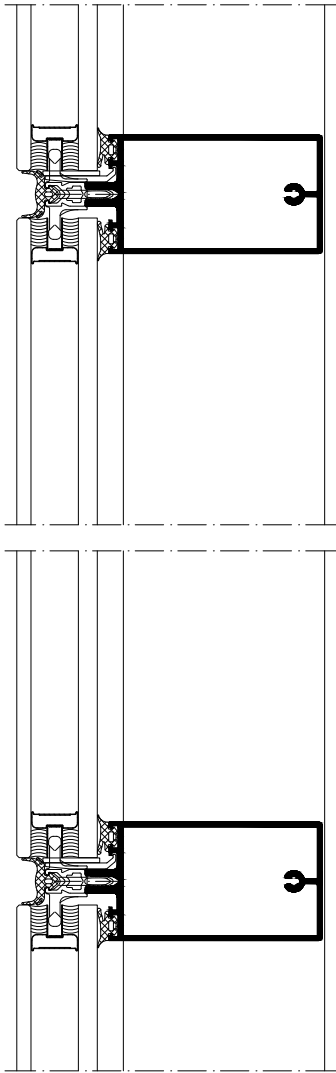
Festverglasung
Fixed glazing



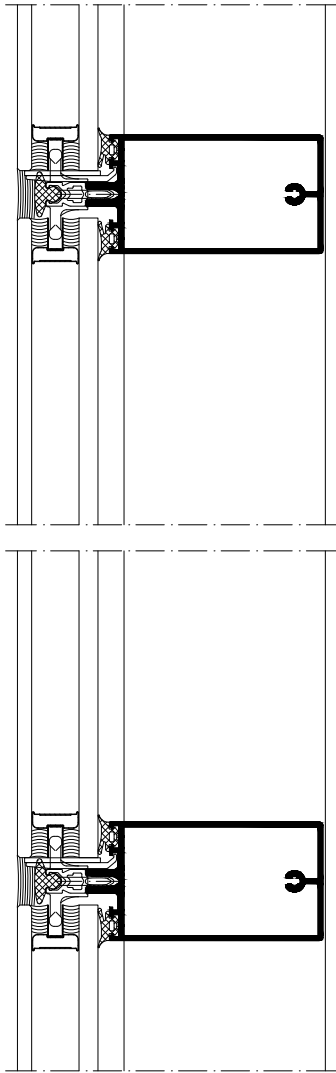
① flächenbündige Trockenverglasung
Flush-fitted dry glazing



① U-förmige Trockenverglasung
U-shaped dry glazing



① Naßversiegelung
Wet sealing



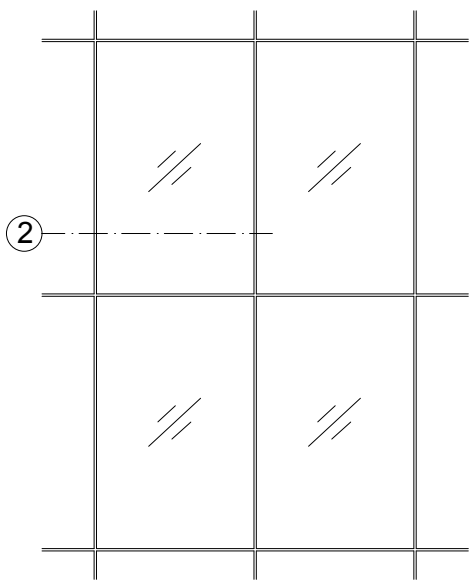
Elementschnitte - Pfosten / Riegel
Unit section details - Mullion / transom

AB1000292

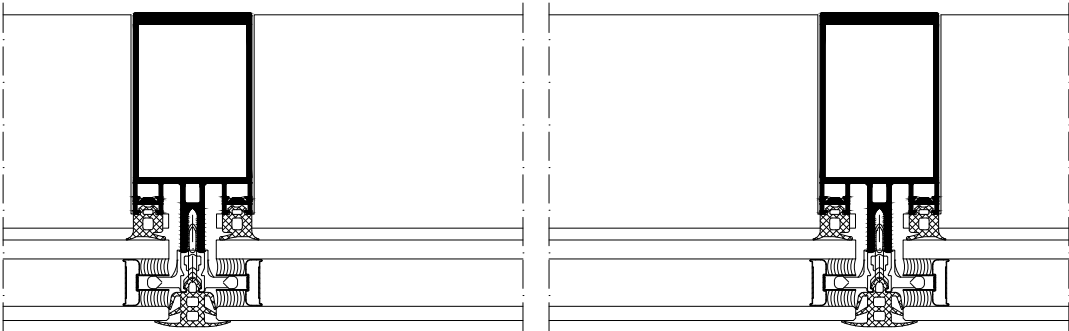
0302

Schüco FWS 50 SG

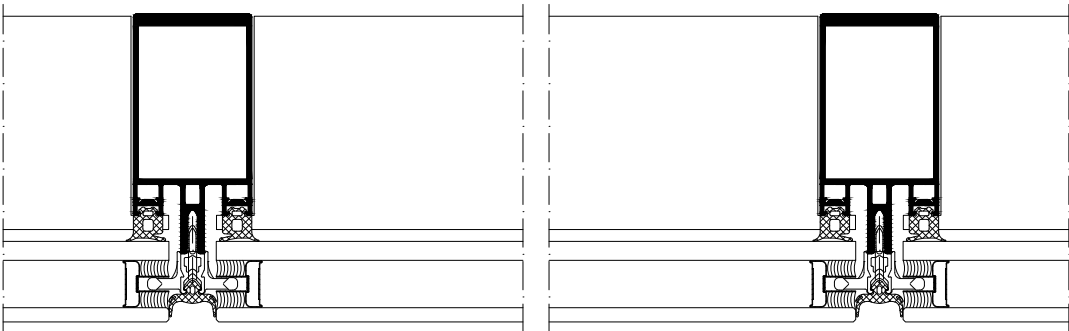
Festverglasung
Fixed glazing



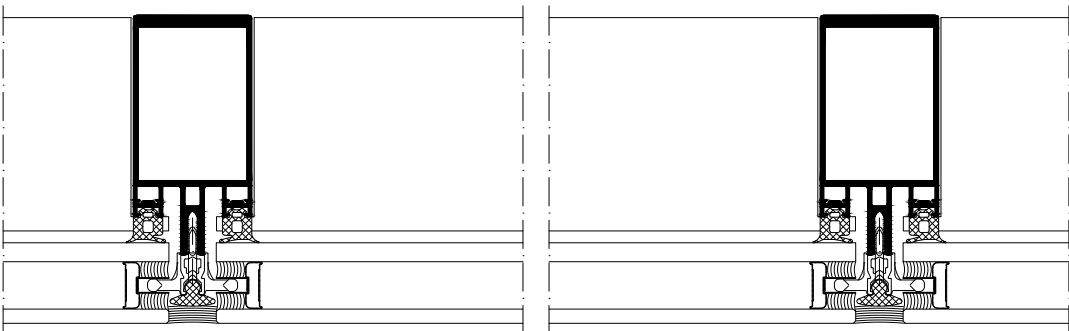
② flächenbündige Trockenverglasung
Flush-fitted dry glazing



② U-förmige Trockenverglasung
U-shaped dry glazing



② Naßversiegelung
Wet sealing



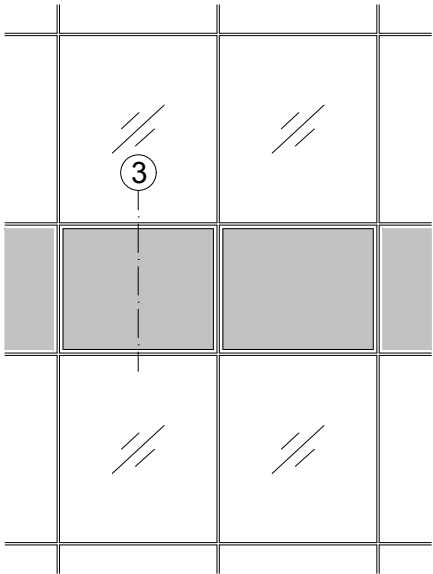
Elementschnitte - Pfosten / Riegel
Unit section details - Mullion / transom

AB1000293

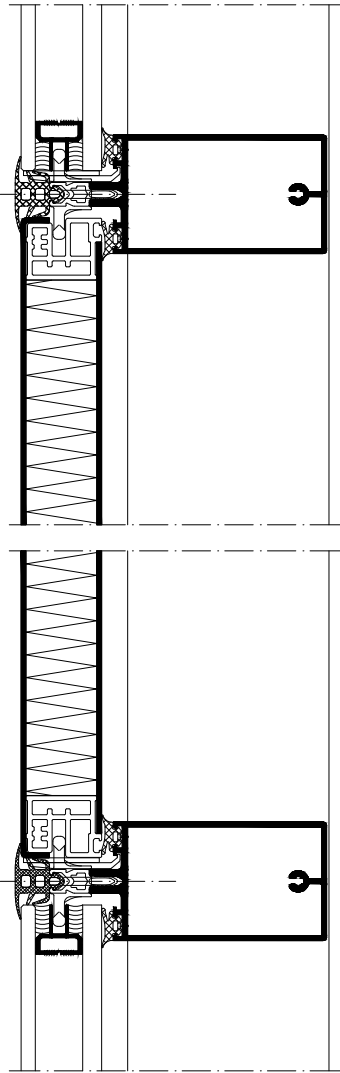
0302

Schüco FWS 50 SG

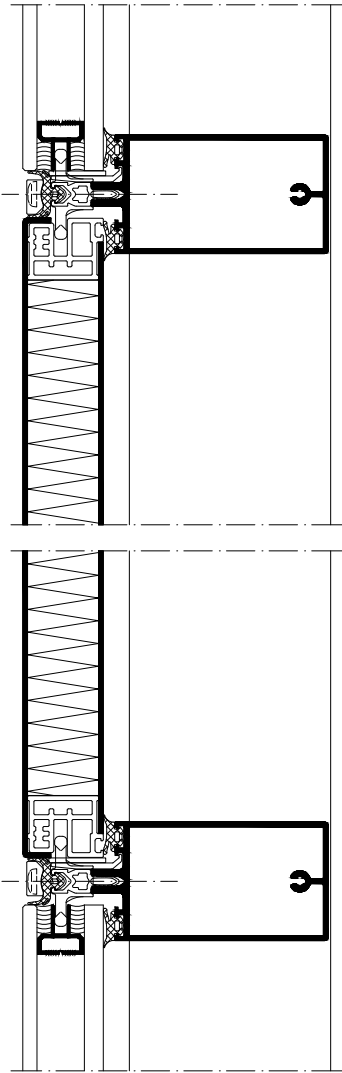
Brüstungspaneel
Spandrel panel



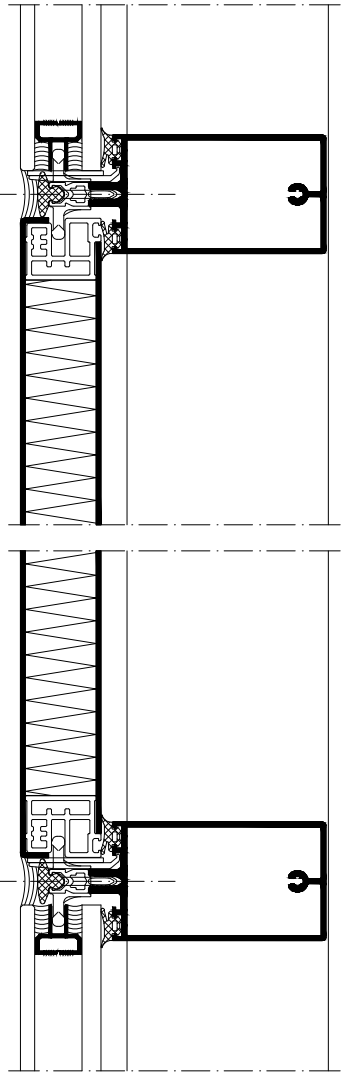
③ flächenbündige Trockenverglasung
Flush-fitted dry glazing



③ U-förmige Trockenverglasung
U-shaped dry glazing



③ Naßversiegelung
Wet sealing



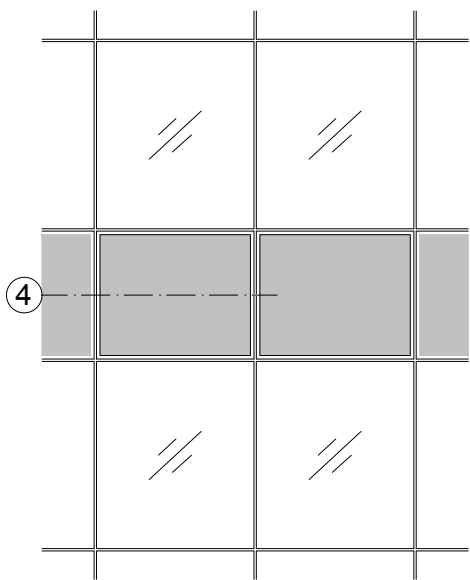
Elementschnitte - Pfosten / Riegel
Unit section details - Mullion / transom

AB1000294

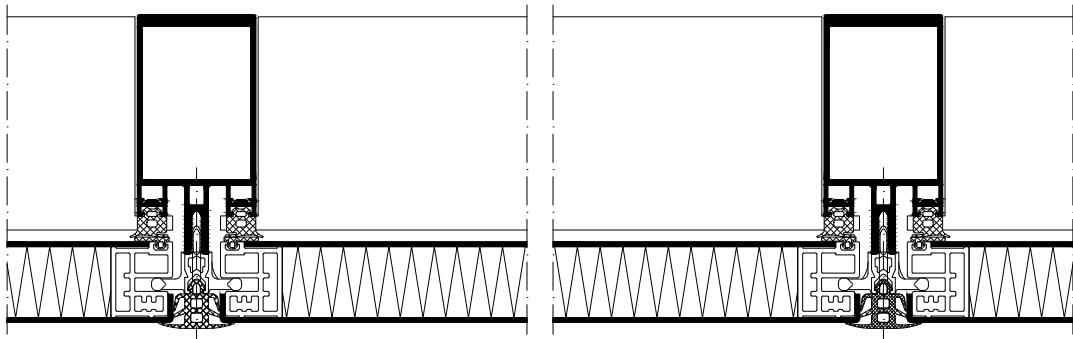
0302

Schüco FWS 50 SG

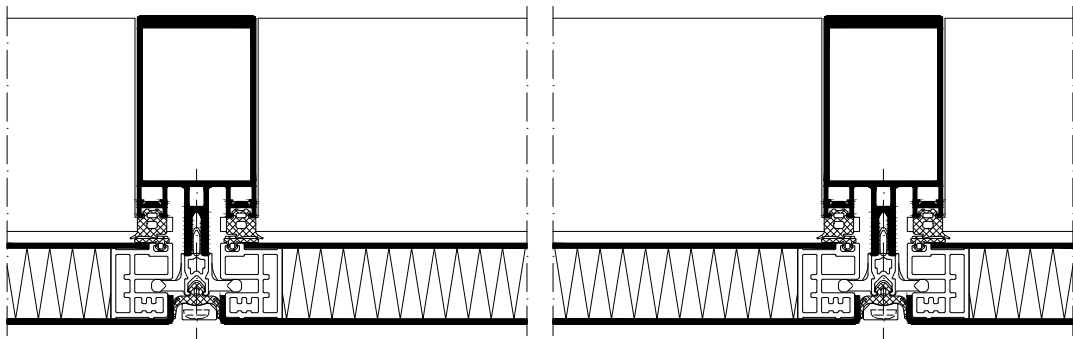
Brüstungspaneel
Spandrel panel



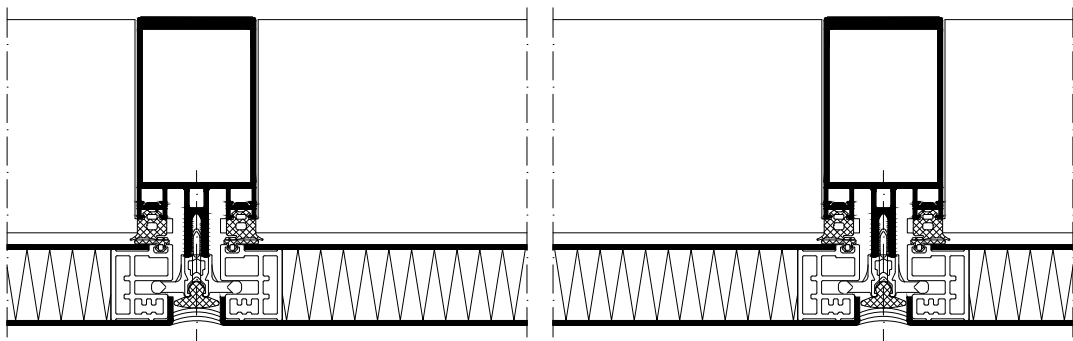
④ flächenbündige Trockenverglasung
Flush-fitted dry glazing



④ U-förmige Trockenverglasung
U-shaped dry glazing



④ Naßversiegelung
Wet sealing



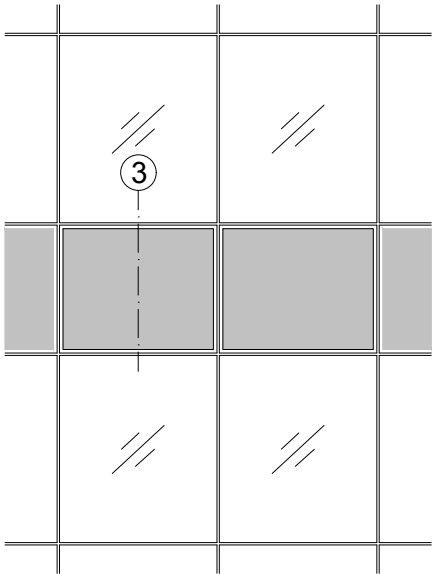
Elementschnitte - Pfosten / Riegel
Unit section details - Mullion / transom

AB1000295

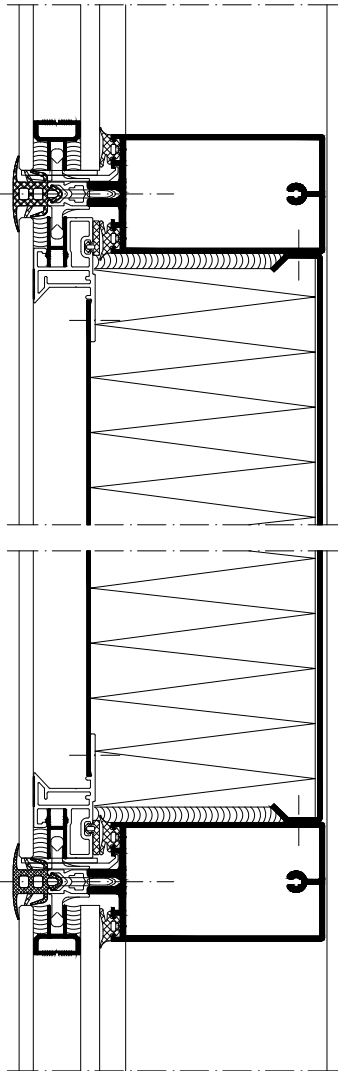
0302

Schüco FWS 50 SG

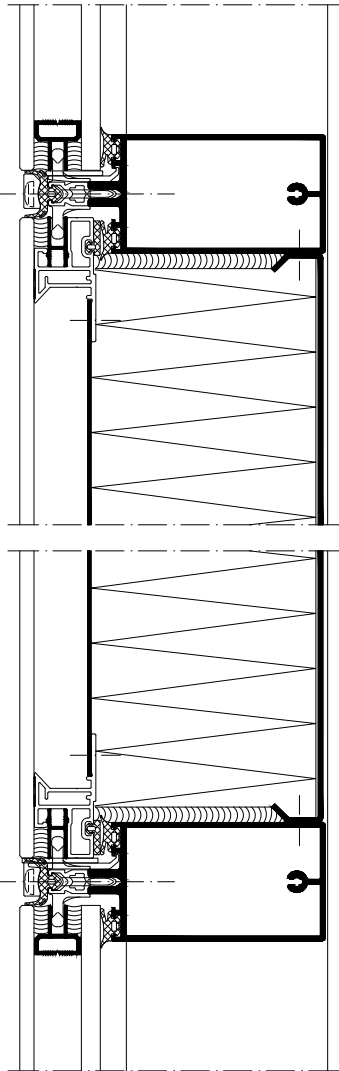
Brüstungsverglasung
Spandrel glazing



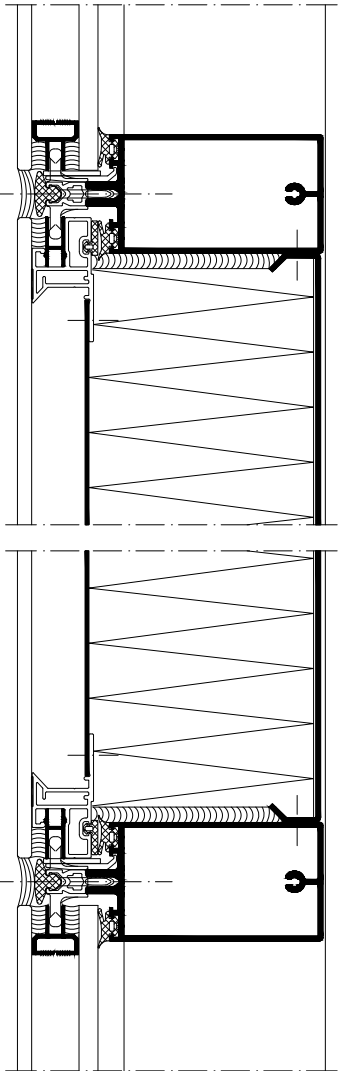
③ flächenbündige Trockenverglasung
Flush-fitted dry glazing



③ U-förmige Trockenverglasung
U-shaped dry glazing



③ Naßversiegelung
Wet sealing



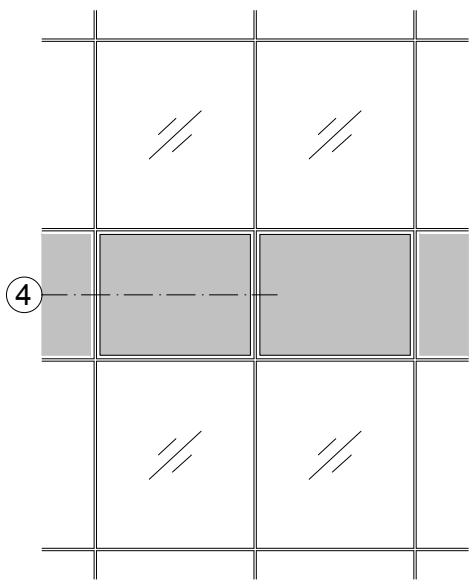
Elementschnitte - Pfosten / Riegel
Unit section details - Mullion / transom

AB1000296

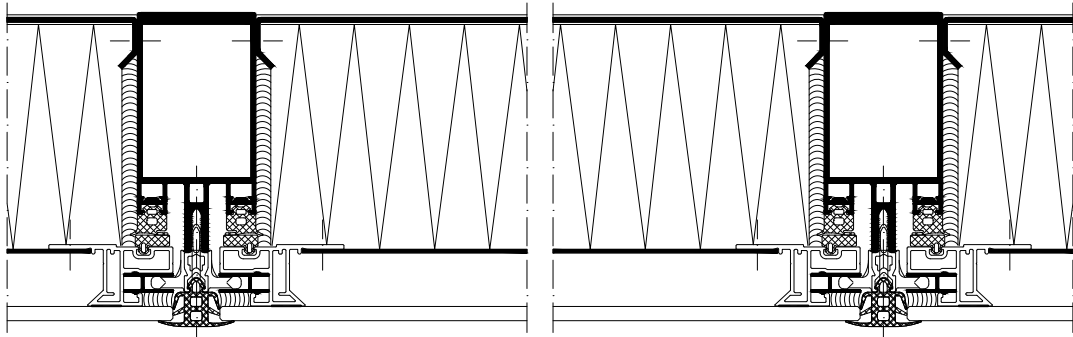
0302

Schüco FWS 50 SG

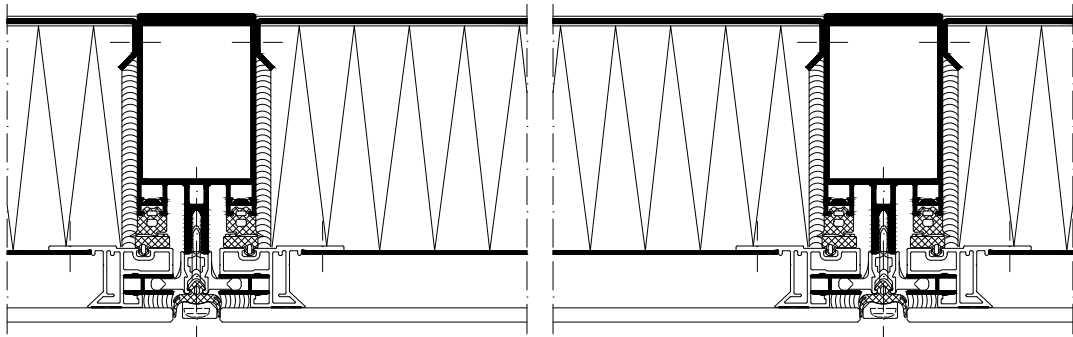
Brüstungsverglasung
Spandrel glazing



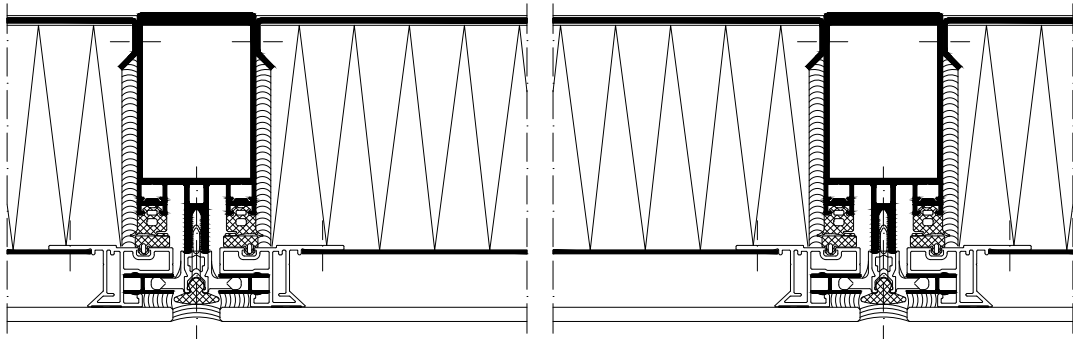
④ flächenbündige Trockenverglasung
Flush-fitted dry glazing



④ U-förmige Trockenverglasung
U-shaped dry glazing



④ Naßversiegelung
Wet sealing



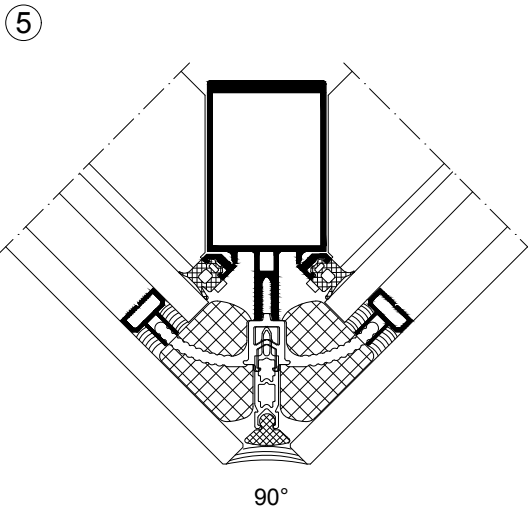
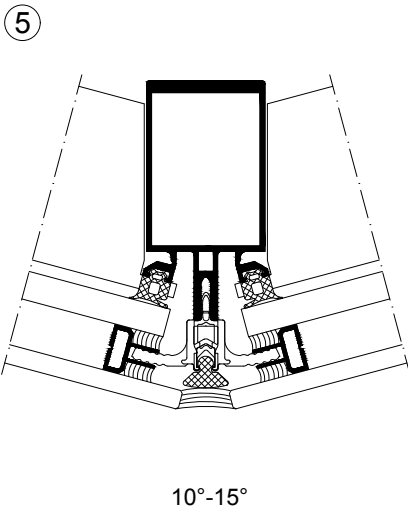
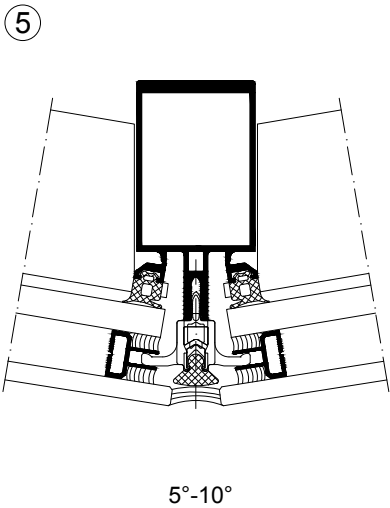
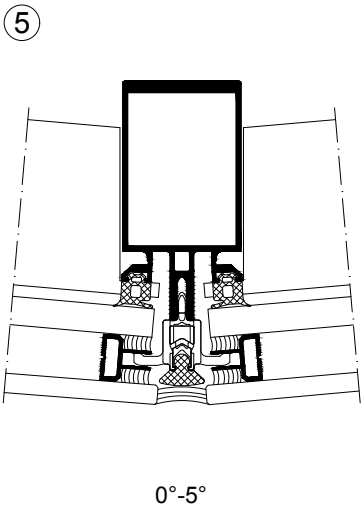
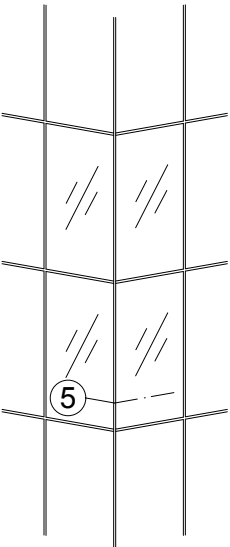
Elementschnitte - Pfosten / Riegel
Unit section details - Mullion / transom

AB1000297

0302

Schüco FWS 50 SG

Segmentierung
Faceting



nur mit Nassversiegelung möglich
Only for use with wet sealing

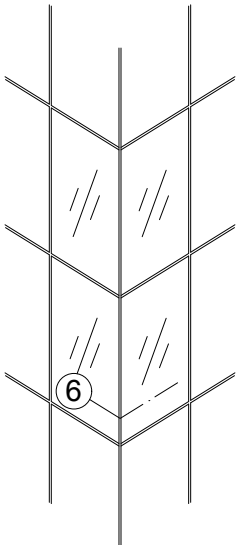
Elementschnitte - Pfosten / Riegel
Unit section details - Mullion / transom

AB1000298

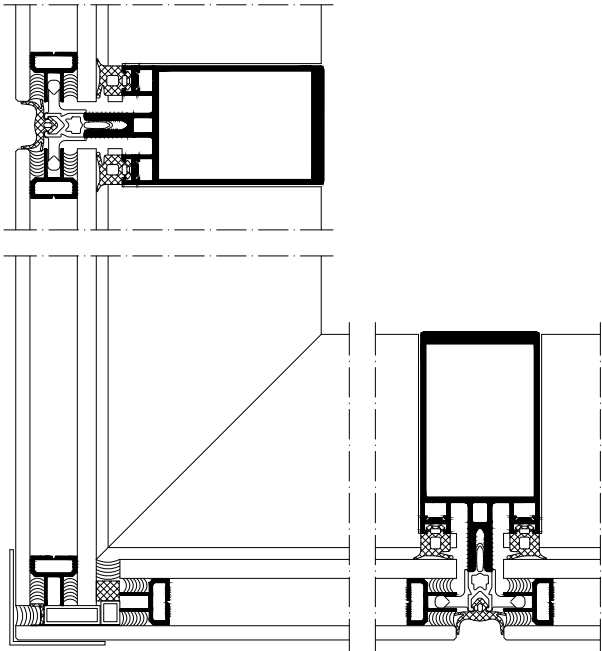
0302

Schüco FWS 50 SG

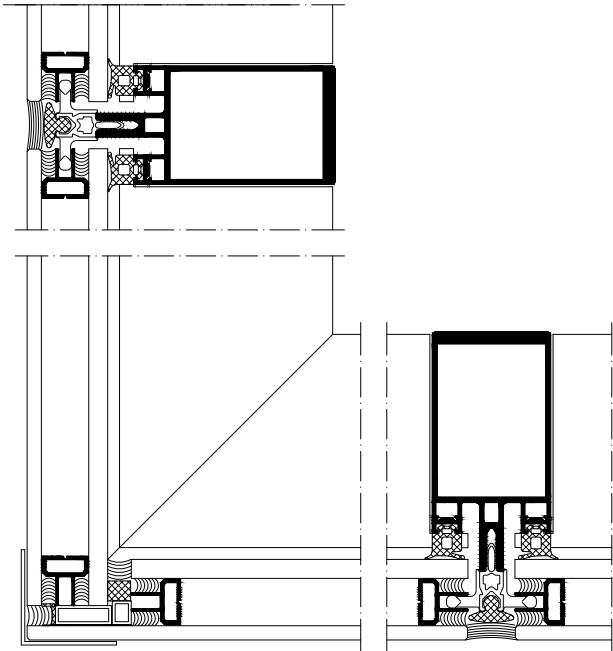
90° Außenecke
90° outer corner



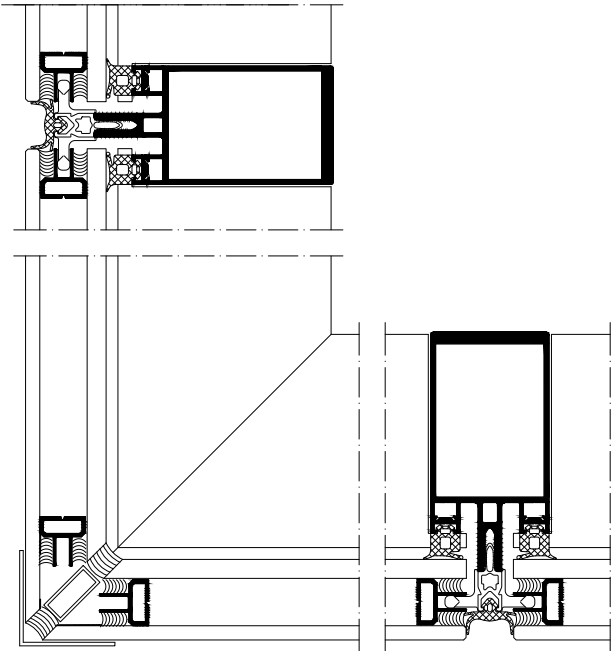
⑥ U-förmige Trockenverglasung
U-shaped dry glazing



⑥ Naßversiegelung
Wet sealing



⑥ U-förmige Trockenverglasung
U-shaped dry glazing



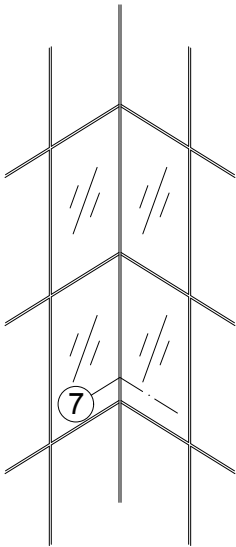
Elementschnitte - Pfosten / Riegel
Unit section details - Mullion / transom

AB1000299

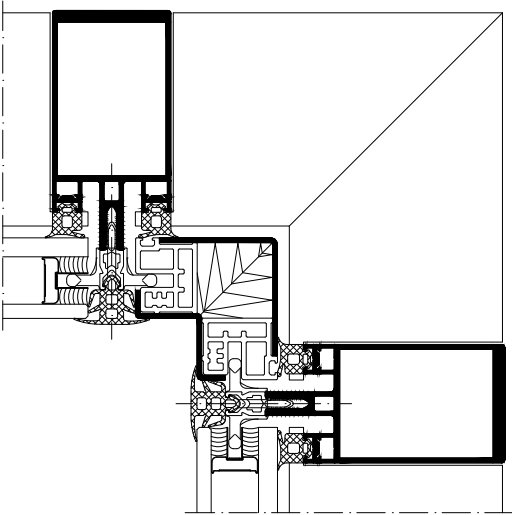
0302

Schüco FWS 50 SG

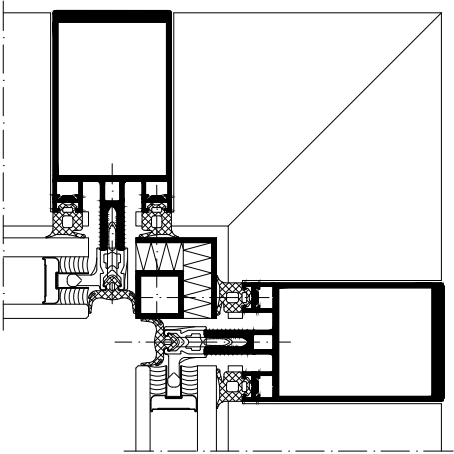
90° Innenecke
90° inner corner



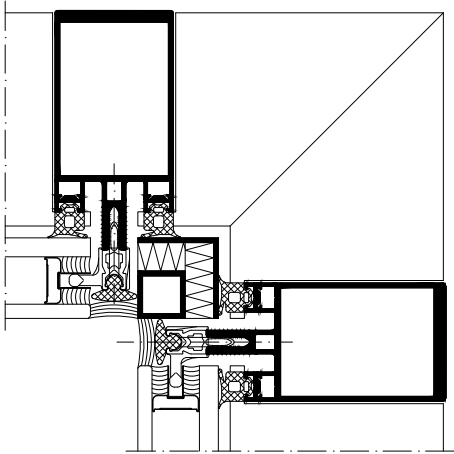
⑦ flächenbündige Trockenverglasung
Flush-fitted dry glazing



⑦ U-förmige Trockenverglasung
U-shaped dry glazing



⑦ Naßversiegelung
Wet sealing



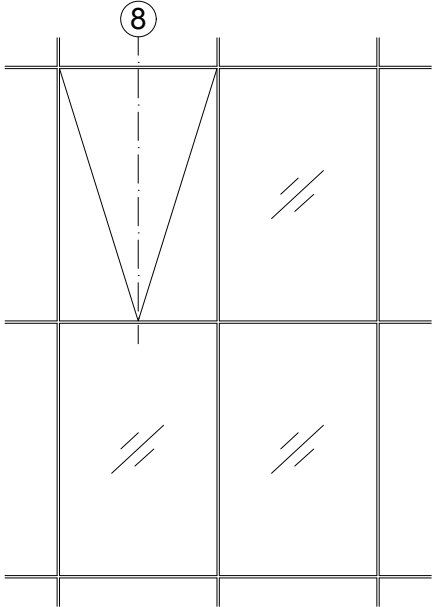
Elementschnitte - Pfosten / Riegel
Unit section details - Mullion / transom

AB1000300

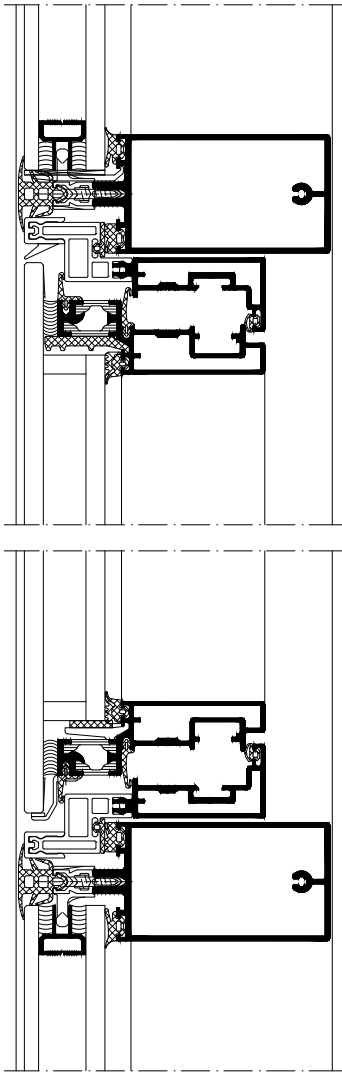
0302

Schüco FWS 50 SG

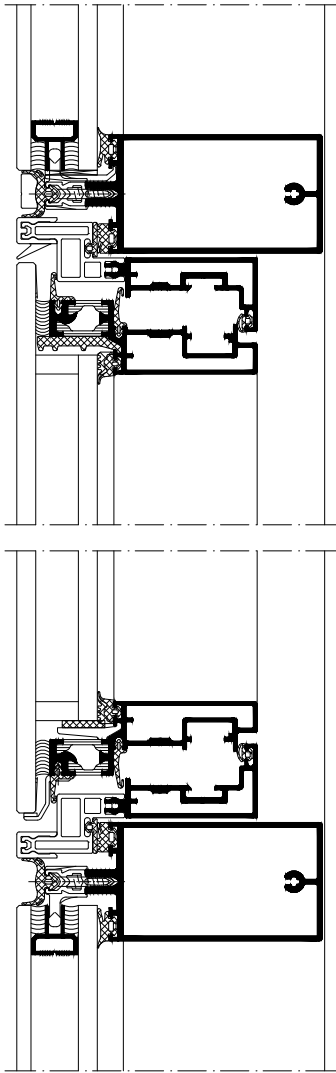
Einsatzelement AWS 102 SG
AWS 102 SG insert unit



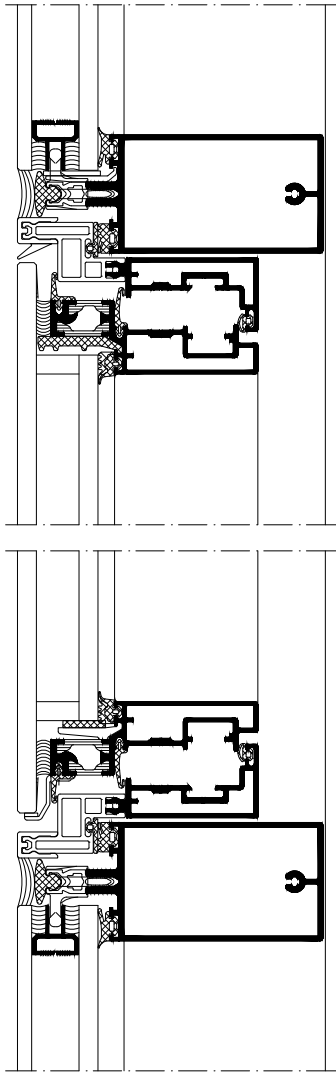
8 flächenbündige Trockenverglasung
Flush-fitted dry glazing



8 U-förmige Trockenverglasung
U-shaped dry glazing



8 Naßversiegelung
Wet sealing



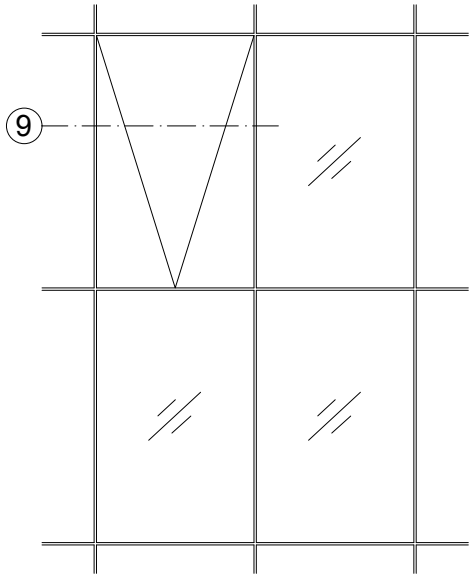
Elementschnitte - Pfosten / Riegel
Unit section details - Mullion / transom

AB1000301

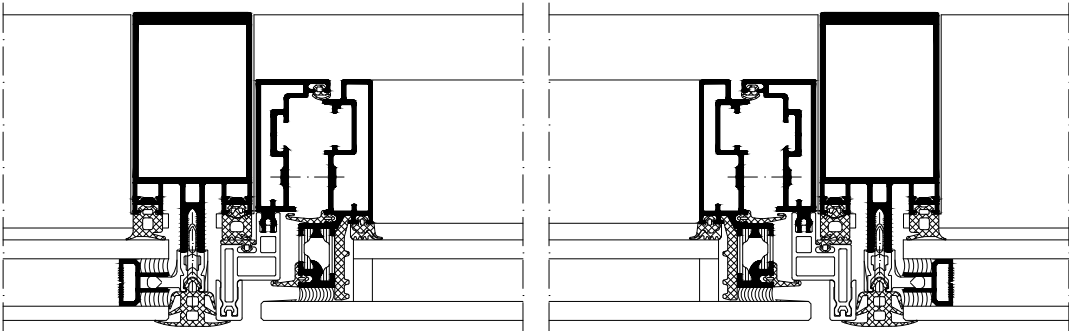
0302

Schüco FWS 50 SG

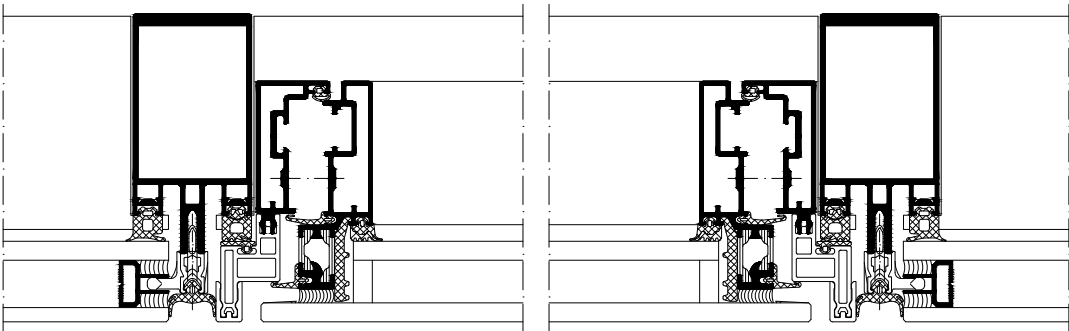
Einsatzelement AWS 102 SG
AWS 102 SG insert unit



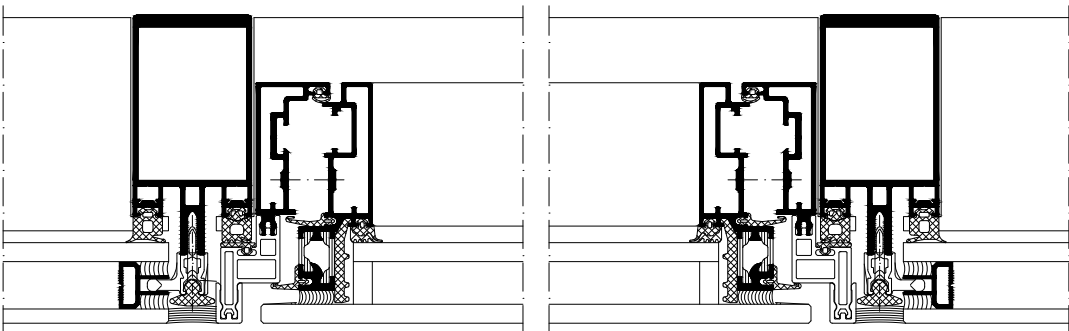
⑨ flächenbündige Trockenverglasung
Flush-fitted dry glazing



⑨ U-förmige Trockenverglasung
U-shaped dry glazing



⑨ Naßversiegelung
Wet sealing



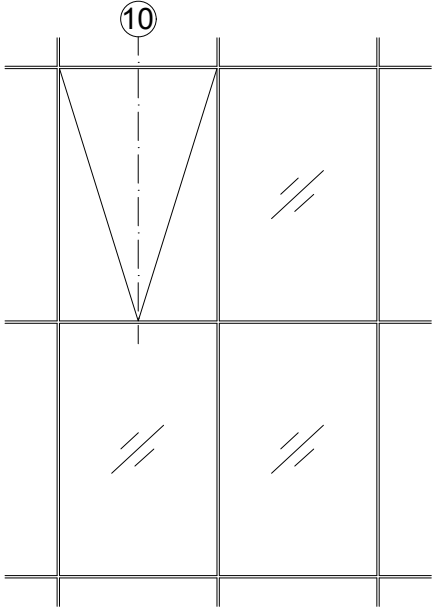
Elementschnitte - Pfosten / Riegel
Unit section details - Mullion / transom

AB1000302

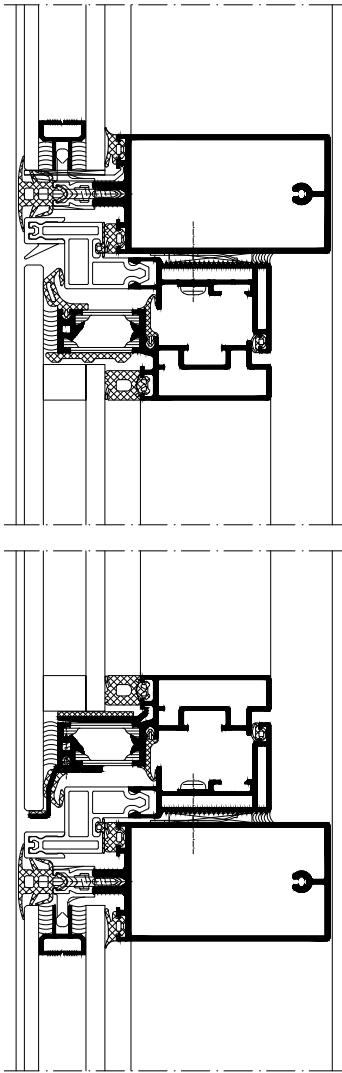
0302

Schüco FWS 50 SG

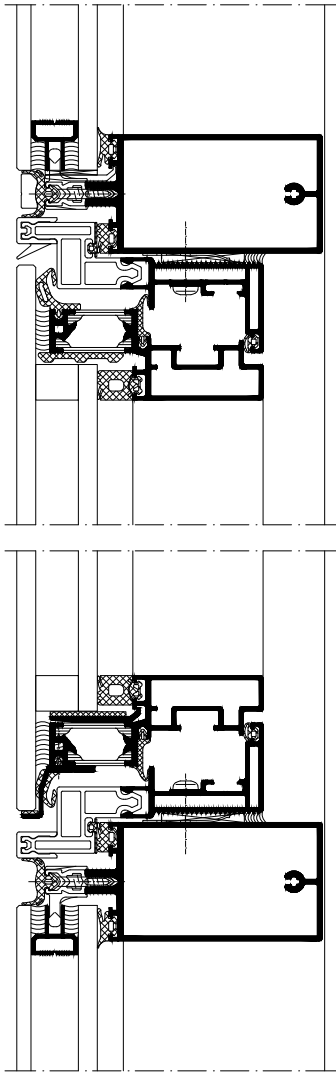
Einsatzelement AWS 114 SG
AWS 114 SG insert unit



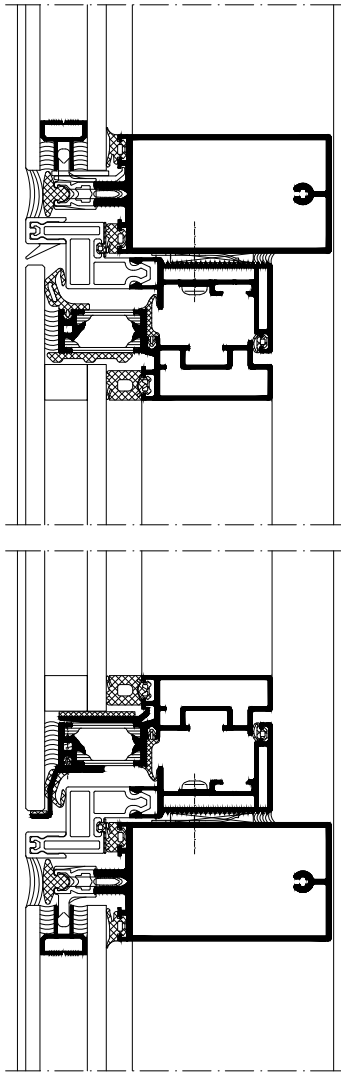
⑩ flächenbündige Trockenverglasung
Flush-fitted dry glazing



⑩ U-förmige Trockenverglasung
U-shaped dry glazing



⑩ Naßversiegelung
Wet sealing



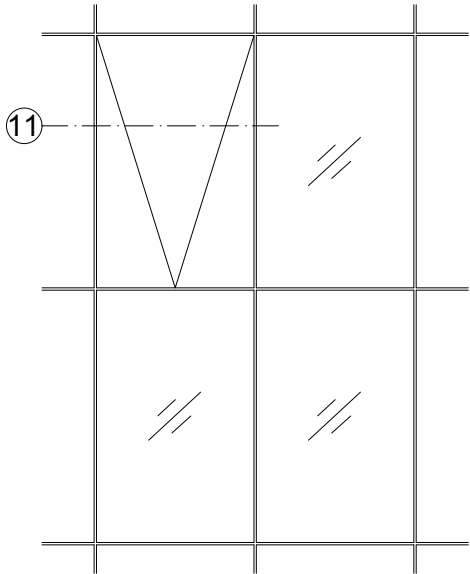
Elementschnitte - Pfosten / Riegel
Unit section details - Mullion / transom

AB1000303

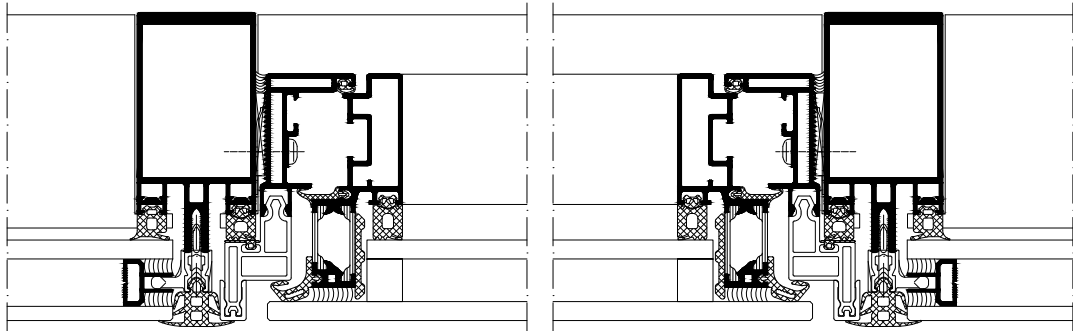
0302

Schüco FWS 50 SG

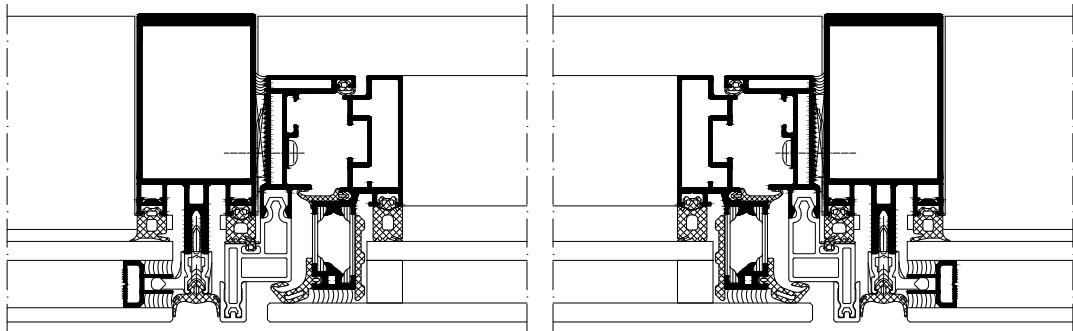
Einsatzelement AWS 114 SG
AWS 114 SG insert unit



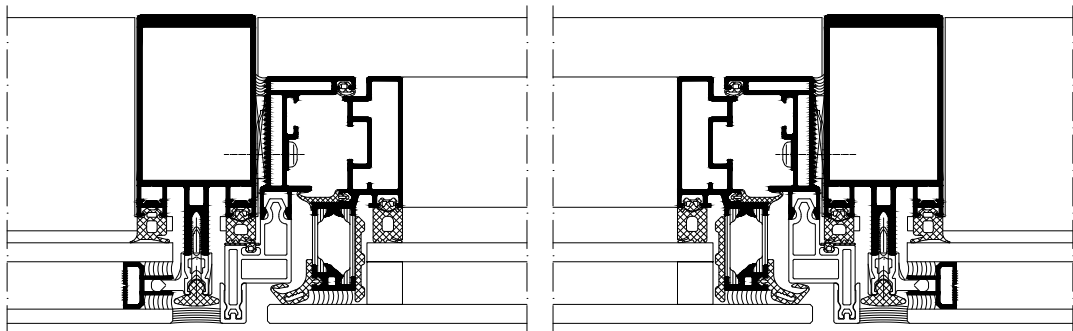
11 flächenbündige Trockenverglasung
Flush-fitted dry glazing



11 U-förmige Trockenverglasung
U-shaped dry glazing



11 Naßversiegelung
Wet sealing



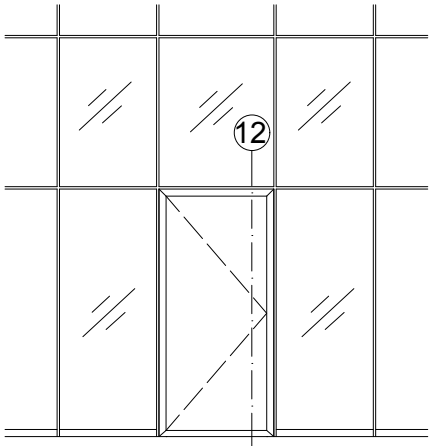
Elementschnitte - Pfosten / Riegel
Unit section details - Mullion / transom

AB1000304

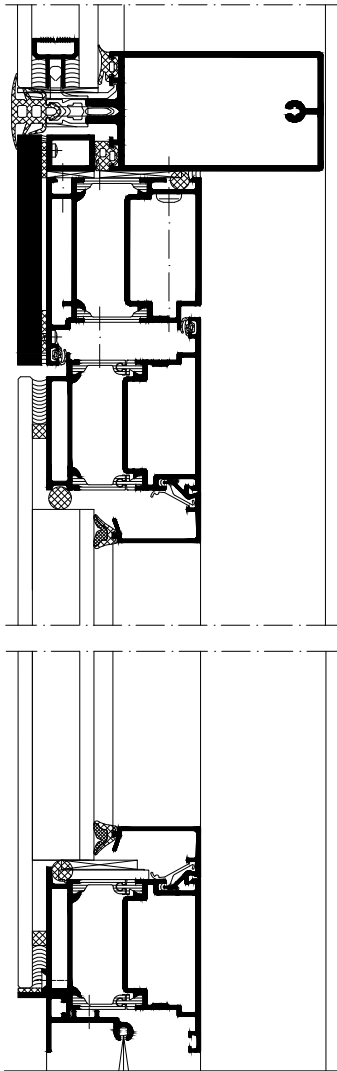
0302

Schüco FWS 50 SG

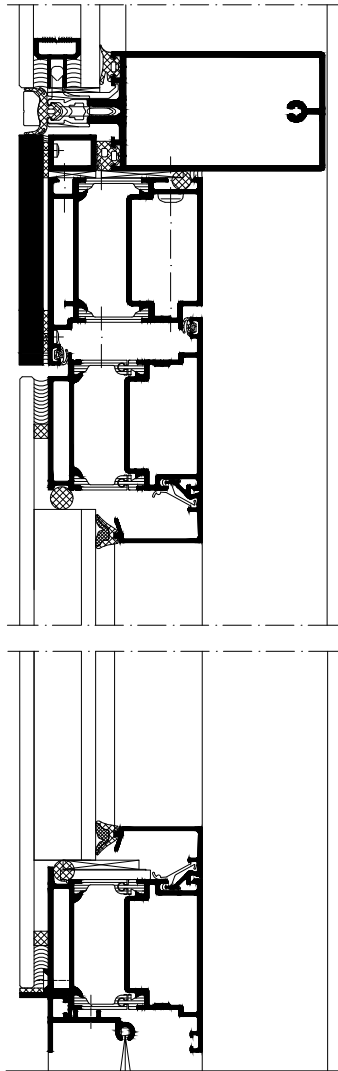
Einsatzelement ADS 65 SG
ADS 65 SG insert unit



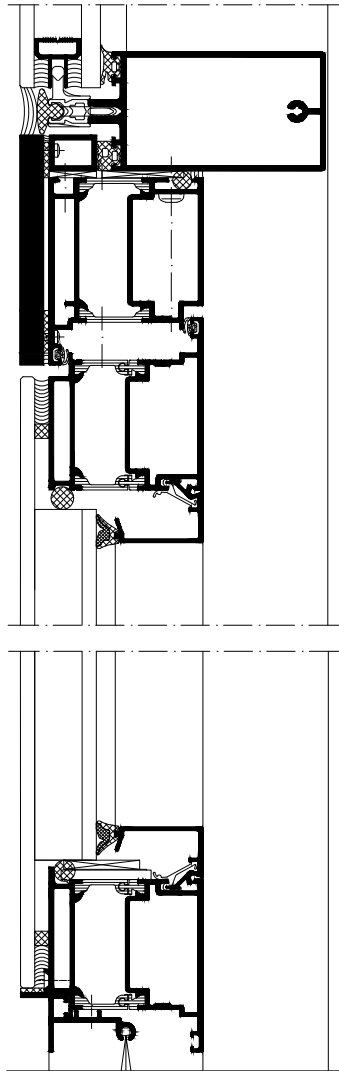
12 flächenbündige Trockenverglasung
Flush-fitted dry glazing



12 U-förmige Trockenverglasung
U-shaped dry glazing



12 Naßversiegelung
Wet sealing



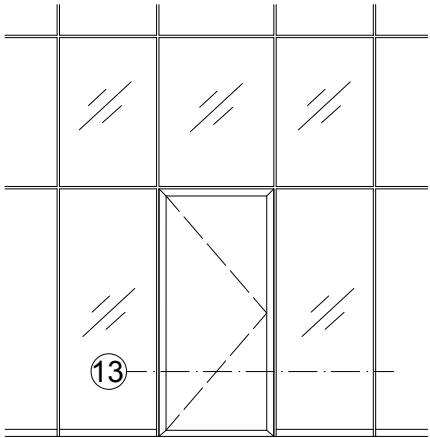
Elementschnitte - Pfosten / Riegel
Unit section details - Mullion / transom

AB1000305

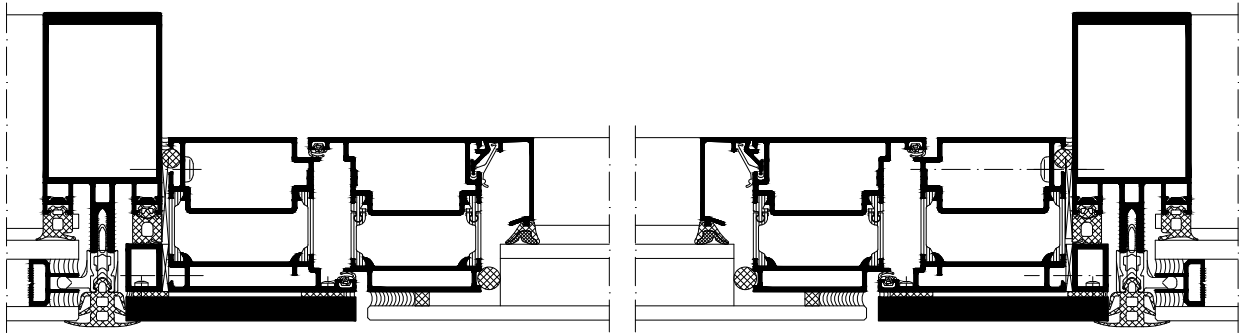
0302

Schüco FWS 50 SG

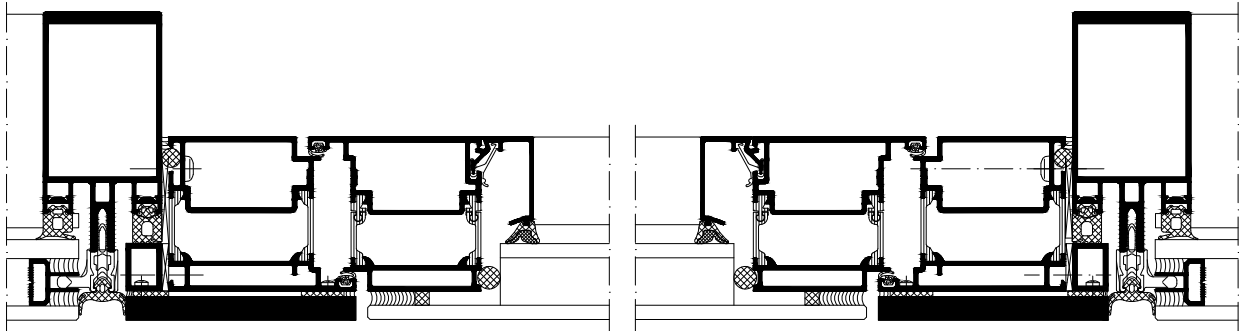
Einsatzelement ADS 65 SG
ADS 65 SG insert unit



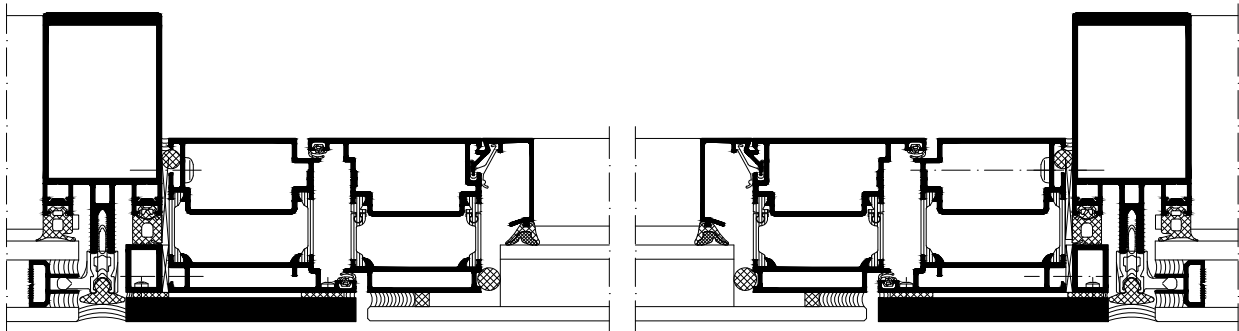
13 flächenbündige Trockenverglasung
Flush-fitted dry glazing



13 U-förmige Trockenverglasung
U-shaped dry glazing



13 Naßversiegelung
Wet sealing

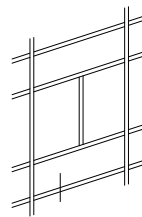


Elementschnitte - Pfosten / Riegel
Unit section details - Mullion / transom

AB1000306

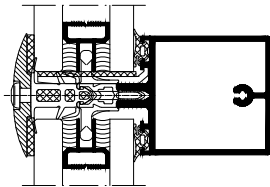
0302

Schüco FWS 50 SG

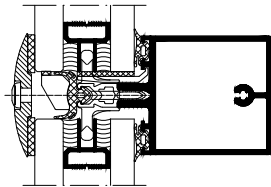


Glas Nothalter
Glass retaining clips

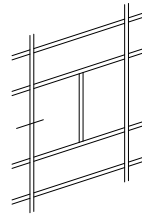
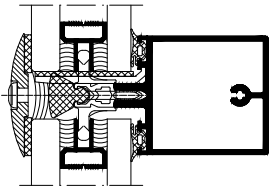
flächenbündige Trockenverglasung
Flush-fitted dry glazing



U-förmige Trockenverglasung
U-shaped dry glazing

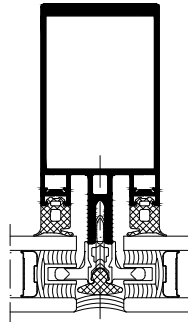


Naßversiegelung
Wet sealing

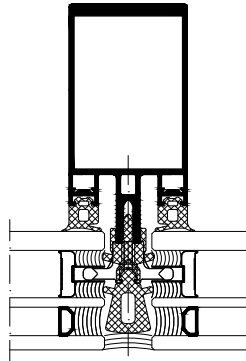


Glasvarianten
Types of glass

2-fach Verglasung
Double glazing



3-fach Verglasung
Triple glazing

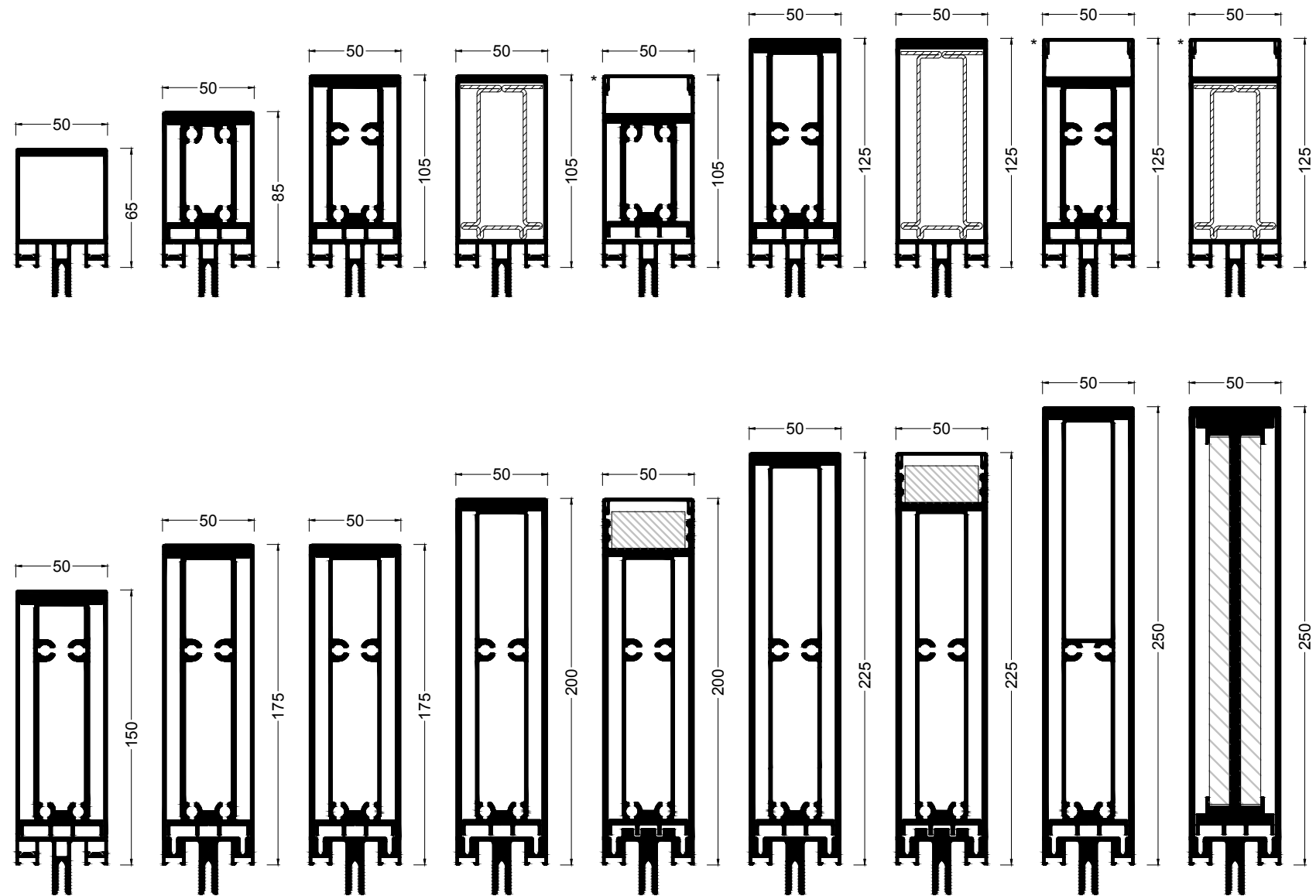
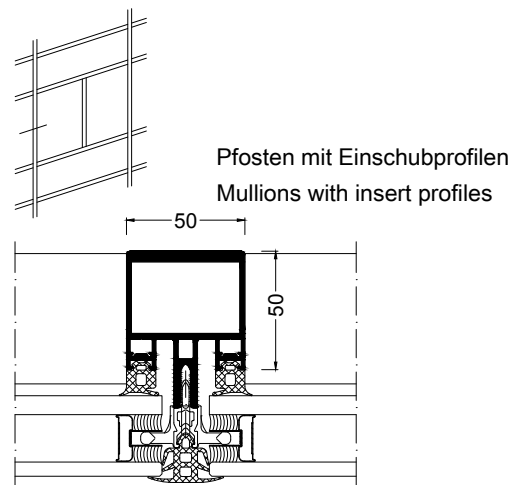


Profilsysteme - Pfosten / Riegel
Profile systems - Mullion / transom

AB1000307

0302

Schüco FWS 50 SG



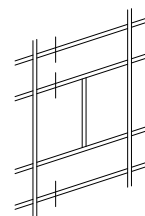
* E-Pfosten
* E-mullion

Profilsysteme - Pfosten / Riegel
Profile systems - Mullion / transom

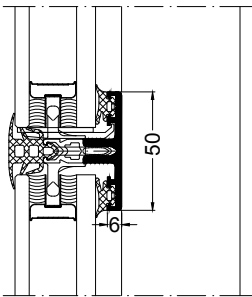
AB1000308

0302

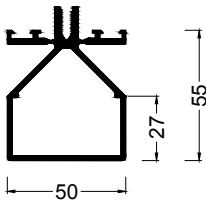
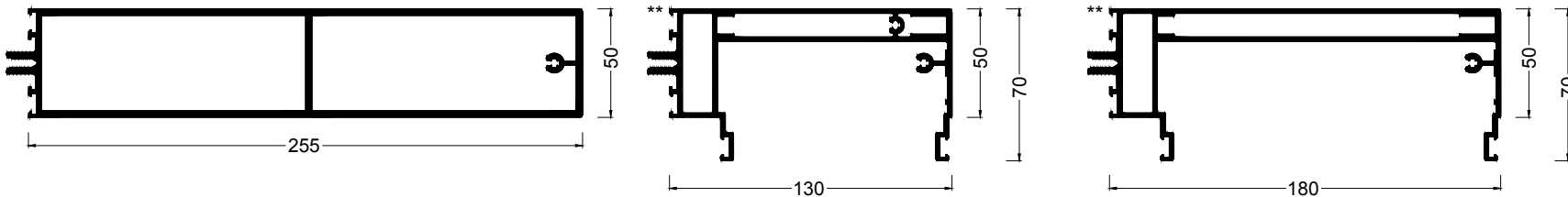
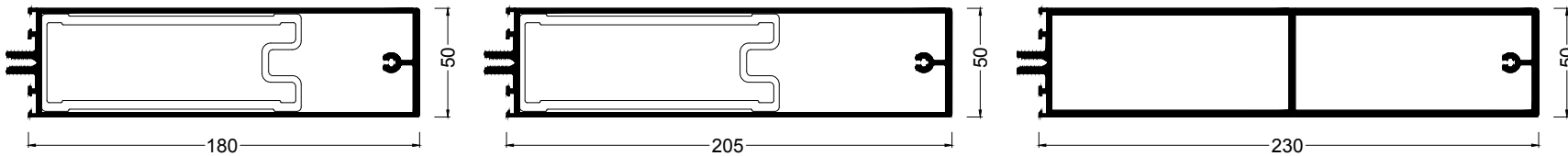
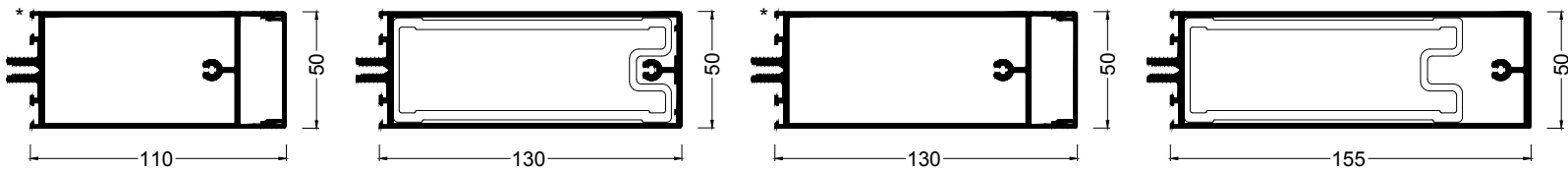
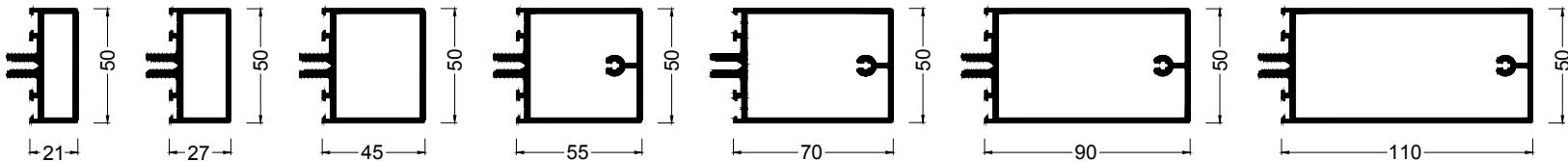
Schüco FWS 50 SG



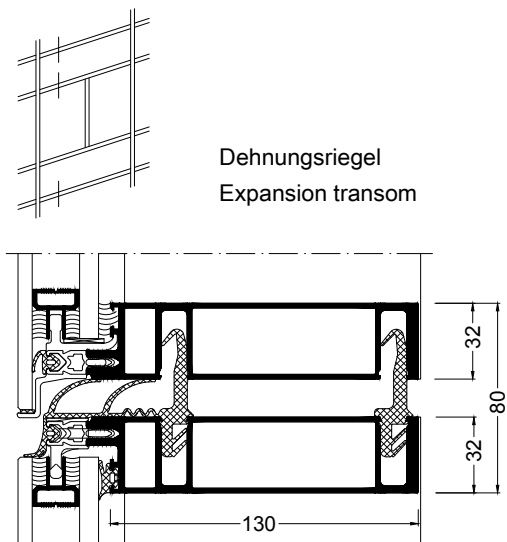
Riegel 1. Ebene mit Einschubprofilen
Level 1 transom with insert profiles



- * E-Pfosten
- * E-mullion
- ** Abschlussprofil
- ** Closer profile



Profilsysteme - Pfosten / Riegel Profile systems - Mullion / transom	AB1000309
	0302
Schüco FWS 50 SG	

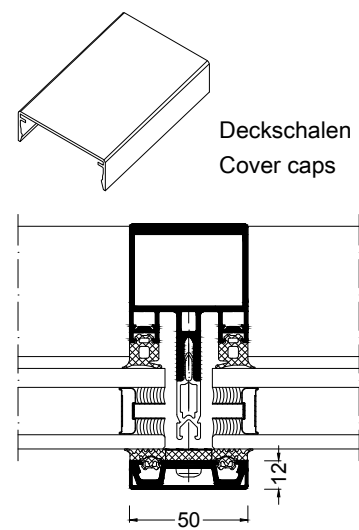
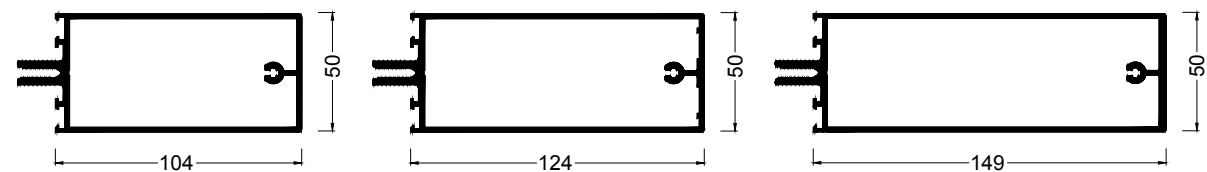
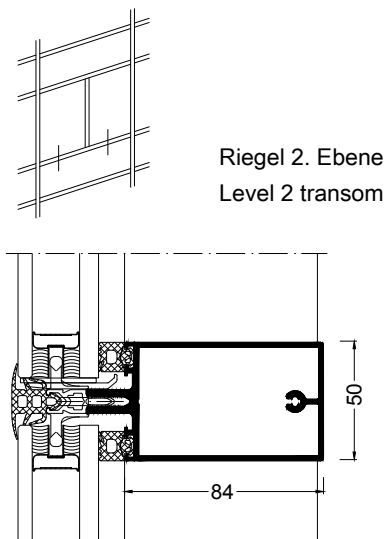


Profilsysteme - Pfosten / Riegel
Profile systems - Mullion / transom

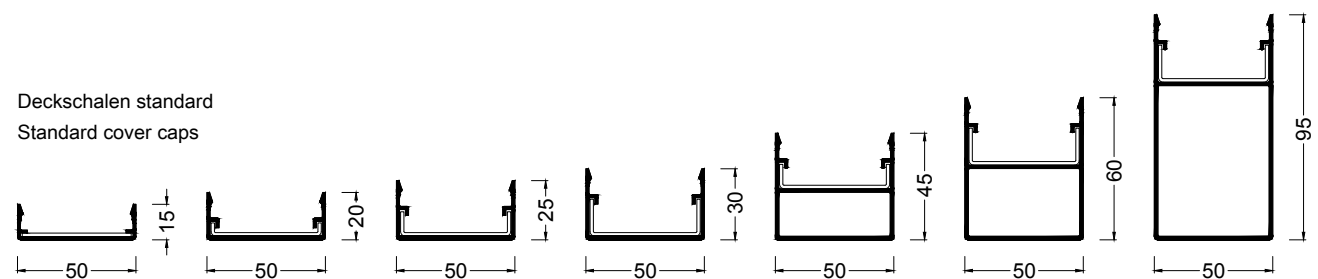
AB1000310

0302

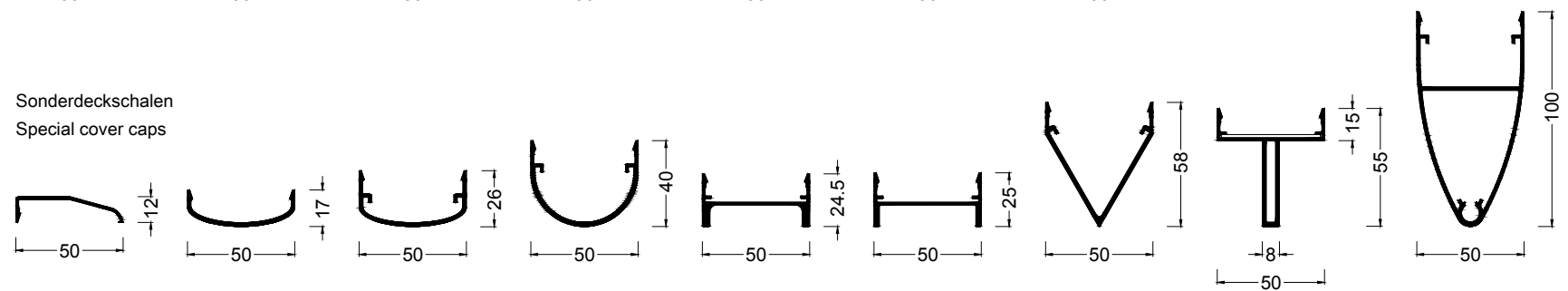
Schüco FWS 50 SG



Deckschalen standard
Standard cover caps



Sonderdeckschalen
Special cover caps

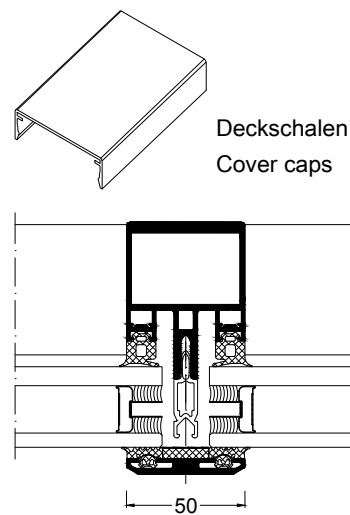


Profilsysteme - Pfosten / Riegel
Profile systems - Mullion / transom

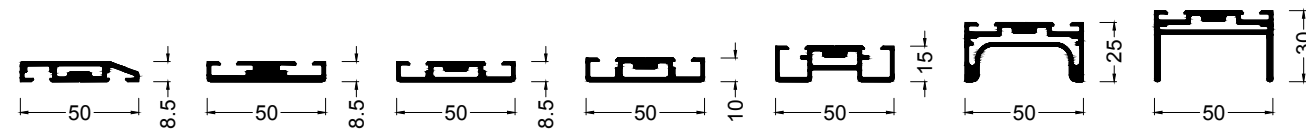
AB1000311

0302

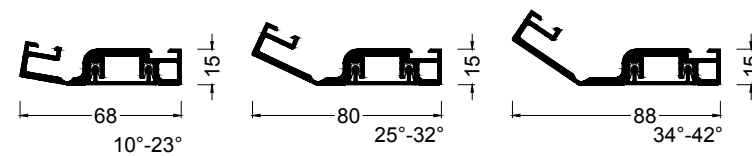
Schüco FWS 50 SG



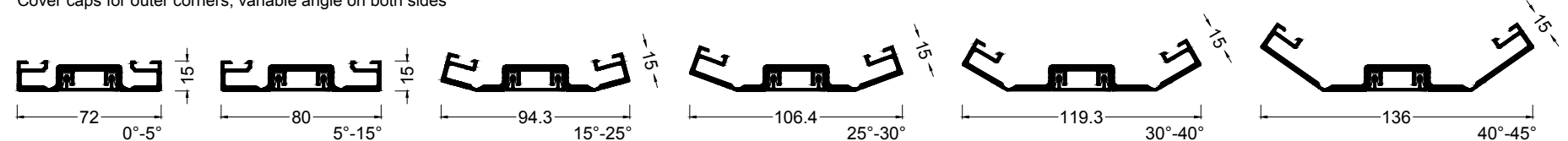
Sichtbar geschraubte Deckschalen
Cover caps with visible screw fixings



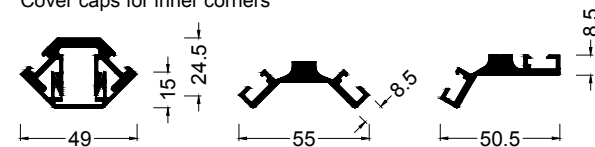
Einseitig abwinkelbare Deckschalen für Außenecken
Cover caps for outer corners, variable angle on one side



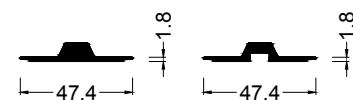
Beidseitig abwinkelbare Deckschalen für Außenecken
Cover caps for outer corners, variable angle on both sides



Deckschalen für Innenecken
Cover caps for inner corners



Flache Deckschalen
Flat cover caps

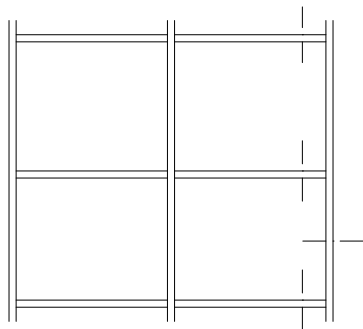


Profilsysteme - Pfosten / Riegel
Profile systems - Mullion / transom

AB1000312

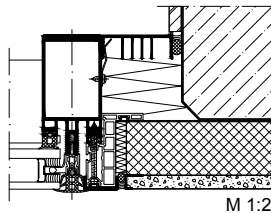
0302

Schüco FWS 50 SG

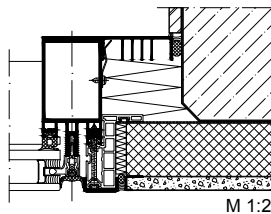


Seitlicher Wandanschluss
Side wall attachment

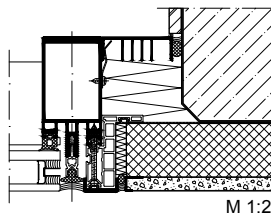
flächenbündige Trockenverglasung
Flush-fitted dry glazing



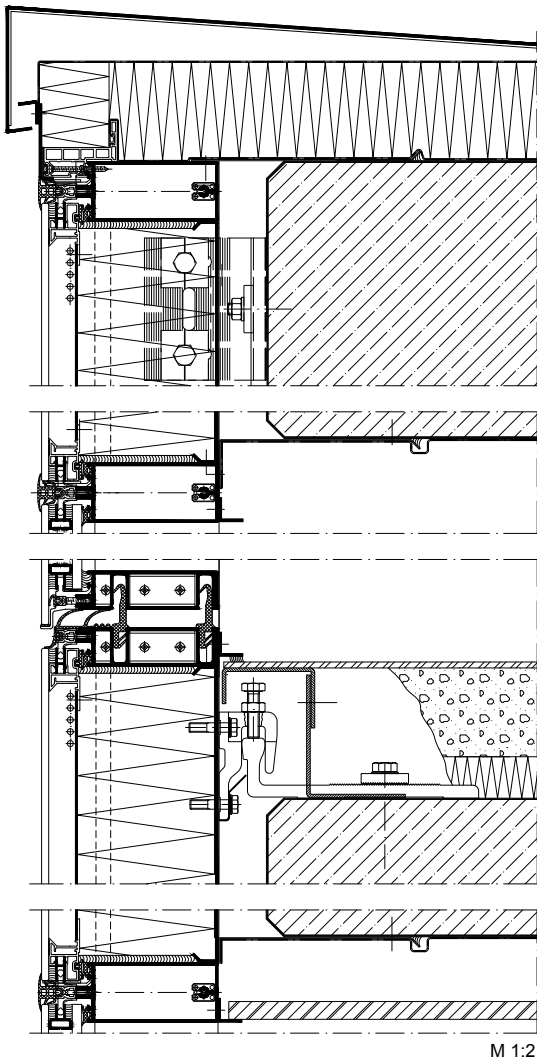
U-förmige Trockenverglasung
U-shaped dry glazing



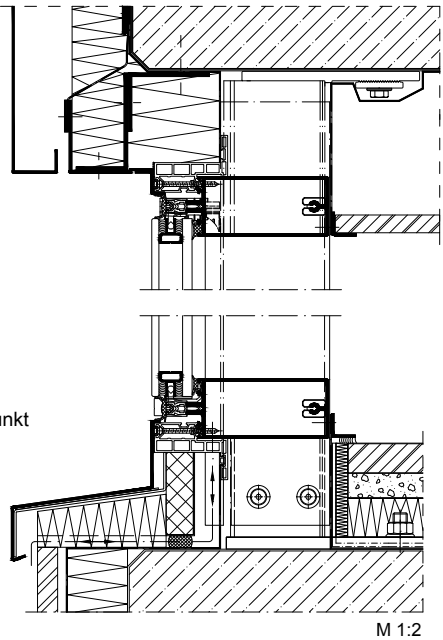
Nassversiegelung
Wet sealing



Attika und Deckenanschlüsse
Fascia and intermediate floor attachments



Anschluss unter der Decke
Attachment underneath the floor



Fußpunkt
Sill

Baukörperanschlüsse
- Pfosten / Riegel
Attachments to building structure
- Mullion / transom

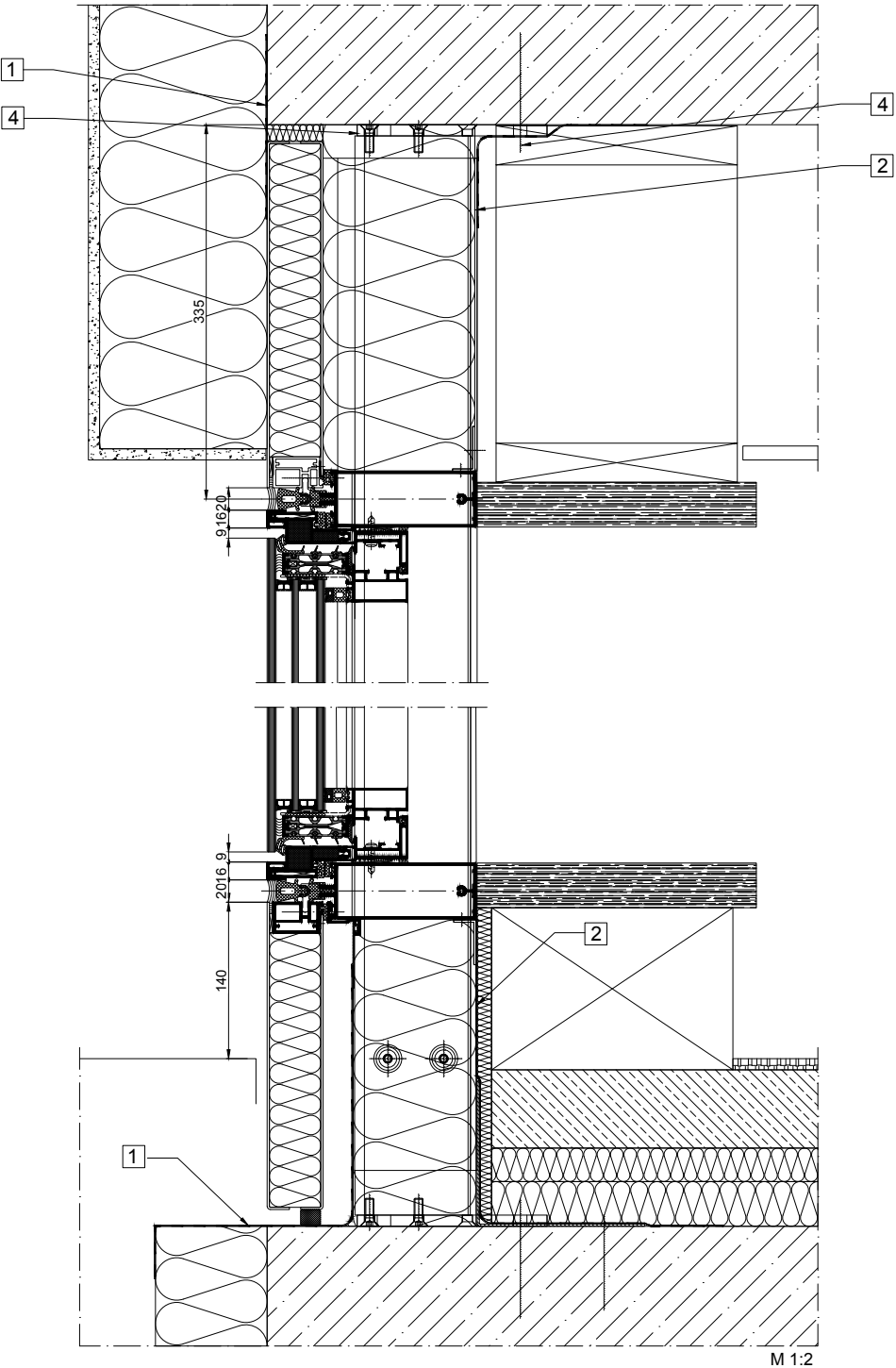
AB1000313

0302

Schüco FWS 50 SG

1

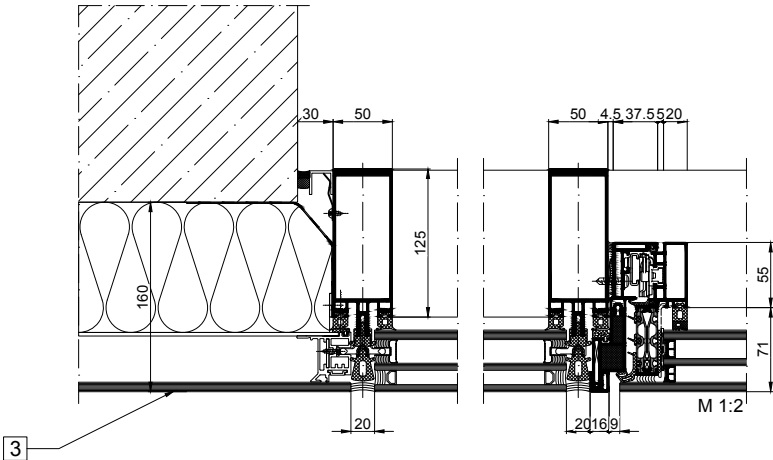
Oberer Anschluss
Top attachment



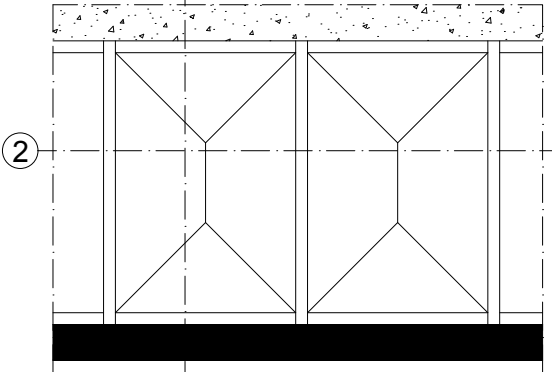
Unterer Anschluss
Bottom attachment

2

Seitlicher Anschluss
Side attachment



1



Konstruktionsmerkmale
Design features

Detailschnitt Parallel-Ausstell-Fenster AWS 114 SG.SI in FWS 50 SG
Section detail of parallel-opening window AWS 114 SG.SI in FWS 50 SG

Konstruktionshinweise
Design information

- 1 Diffusionsoffene Folie
Breathable foil
- 2 Dampfdichte Folie
Vapour-tight foil
- 3 Delogcolor-Platte
Delogcolor plate
- 4 Zugelassenes Dübelsystem
Approved anchor system
- ! Die genaue Auslegung der Bauteile zur Fassadenbefestigung muss nach endgültiger statischer Berechnung und entsprechend den gültigen Normen erfolgen.
The precise layout of the components for façade fixing must comply with the final structural calculation and the applicable standards.

Allgemeine Hinweise
General information

Die Größenauslegung der Profile muß nach endgültiger statischer Berechnung erfolgen! Die SCHÜCO-Verarbeitungsrichtlinien sind zu beachten. Alle Haarfugen, Kerb-, T- und Stoßstellen sind nach den Richtlinien einzudichten. Flächenkontakt von Alu- bzw. Stahlprofilen ist durch Dichtbänder zu vermeiden. Alle von uns angegebenen Maße und Winkel sind vom Verarbeiter verantwortlich zu überprüfen. Verbindungsmittel müssen je nach Montagekonzept, statischer Berechnung und den gültigen Normen ausgelegt werden.

The actual size of the profiles must comply with the final structural calculation. The Schüco fabrication guidelines must be observed. All hairline joints, notches, T-joints and butt joints must be sealed in accordance with the guidelines. Surface contact between aluminium and steel profiles must be prevented by using sealing tape. It is the responsibility of the fabricator to check all dimensions and angles specified by us. The means of attachment must be designed to suit the type of assembly, structural calculations and relevant standards.

Baukörperanschlüsse
- Wärmedämmverbundsystem
Attachments to building structure
- Composite thermal insulation system

AB9000048

0100

Schüco FWS 50 SG