



CAD-Bibliothek  
CAD Library

---

**Aluminium-Systeme**  
Fenstersysteme

## **Schüco Fenster AWS 70.HI**

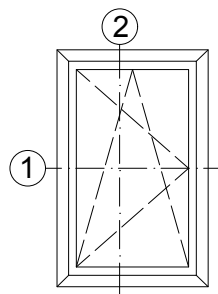
---

**Aluminium Systems**  
Window Systems

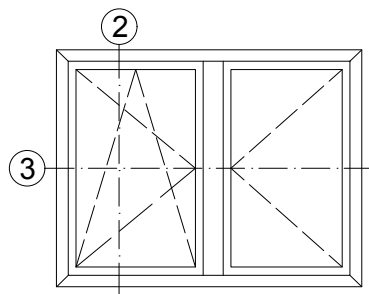
## **Schüco Window AWS 70.HI**

---

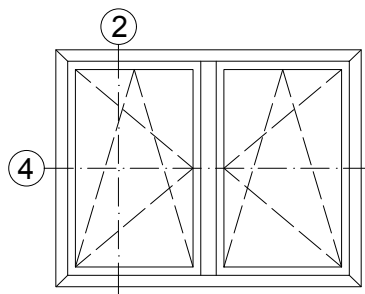
Einflügeliges Fenster  
Single-vent window



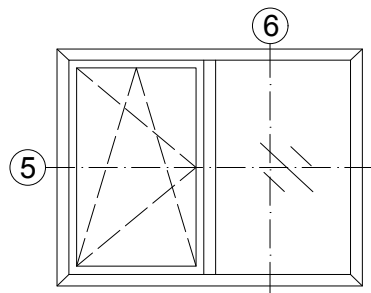
Stulpfenster  
Double-vent window



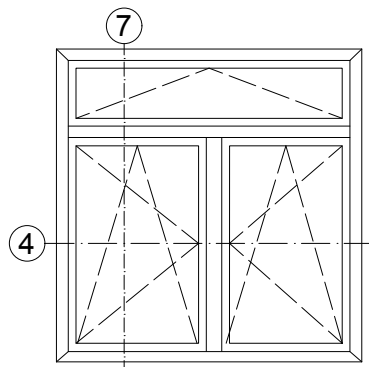
Zweiflügeliges Fenster  
Vent + vent



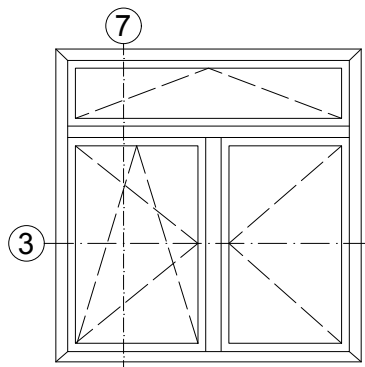
Einflügeliges Fenster mit Festfeld  
Single-vent window with fixed light



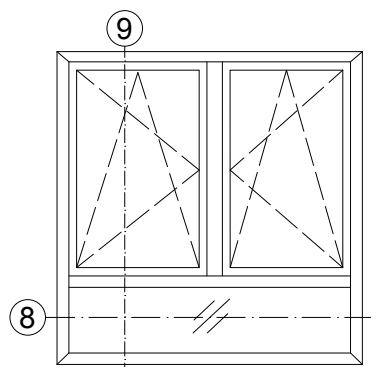
Zweiflügeliges Fenster mit Oberlicht  
Vent + vent with toplight



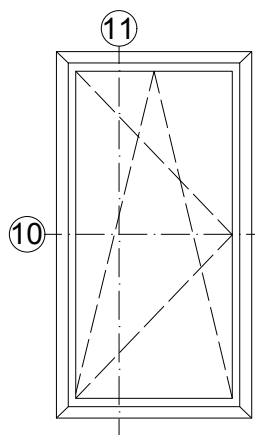
Stulpfenster mit Oberlicht  
Double-vent window with toplight



Zweiflügeliges Fenster mit Unterlicht  
Vent + vent with bottom light



Fenstertür  
Window door



Einsatzelemente sind in Fassadensysteme zu finden  
Insert units can be found in façade systems

Technische Informationen  
Technical information

Prüfungen und Normen** Tests and standards **	
Wärmedämmung nach DIN EN ISO 1077-2 Thermal insulation in accordance with DIN EN ISO 1077-2	Uf = 1,5 - 1,9 W/(m²K)
Schalldämmung nach DIN EN ISO 140-3 Sound reduction in accordance with DIN EN ISO 140-3	bis Rw 48 dB Up to Rw 48 dB
Einbruchhemmung nach DIN V ENV 1627 (DIN EN 1627) Burglar resistance in accordance with DIN V ENV 1627 (DIN EN 1627)	Klasse WK3 (RC3) Class WK3 (RC 3)
Luftdurchlässigkeit nach DIN EN 12207 Air permeability in accordance with DIN EN 12207	Klasse 4 Class 4
Schlagregendichtheit nach DIN EN 12208 Watertightness in accordance with DIN EN 12208	Klasse 9A Class 9A
Windlastwiderstand nach DIN EN 12210* Wind load resistance in accordance with DIN EN 12210	Klasse C5/B5 Class C5/B5
Mechanische Beanspruchung nach DIN EN 13115 Mechanical loading in accordance with DIN EN 13115	Klasse 4 Class 4
Dauerfunktion nach DIN EN 12400 Durability in accordance with DIN EN 12400	Klasse 3 Class 3

\* Durchbiegungsverhalten profilabhängig  
The amount of deflection will depend on the profile

\*\* Die Angaben beschreiben die Bestwerte des Gesamtsystems.  
Die Eigenschaften einer jeweils gewählten Ausführungsvariante oder Elementkombination sind im Einzelfall anhand der ausführlichen Prüfdokumentation zu bestimmen.  
The information describes the optimum values of the entire system. The properties of a selected design option or unit combination have to be determined individually based on the comprehensive test documentation.

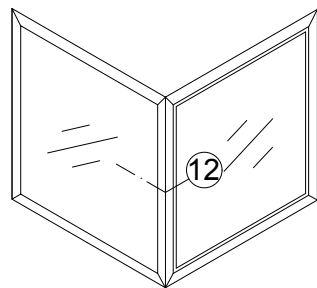
Elementbeispiele - Innen öffnend  
Unit examples - Inward-opening

AB0000290

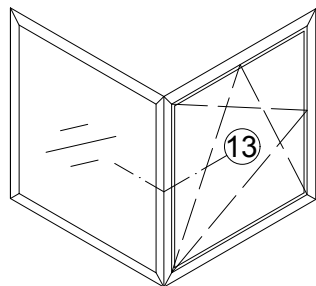
0201

Schüco AWS 70.HI

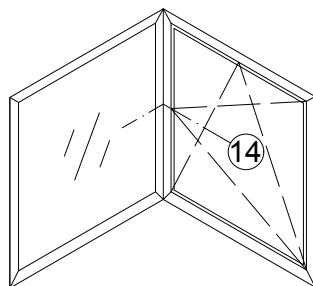
Außenecke 90°  
90° outer corner



Außenecke mit Öffnungselement  
Outer corner with opening unit



Innenecke mit Öffnungselement  
Inner corner with opening unit



Technische Informationen

Technical information

Prüfungen und Normen** Tests and standards **	
Wärmedämmung nach DIN EN ISO 1077-2 Thermal insulation in accordance with DIN EN ISO 1077-2	Uf = 1,5 - 1,9 W/(m²K)
Schalldämmung nach DIN EN ISO 140-3 Sound reduction in accordance with DIN EN ISO 140-3	bis Rw 48 dB Up to Rw 48 dB
Einbruchhemmung nach DIN V ENV 1627 (DIN EN 1627) Burglar resistance in accordance with DIN V ENV 1627 (DIN EN 1627)	Klasse WK3 (RC3) Class WK3 (RC 3)
Luftdurchlässigkeit nach DIN EN 12207 Air permeability in accordance with DIN EN 12207	Klasse 4 Class 4
Schlagregendichtheit nach DIN EN 12208 Watertightness in accordance with DIN EN 12208	Klasse 9A Class 9A
Windlastwiderstand nach DIN EN 12210* Wind load resistance in accordance with DIN EN 12210	Klasse C5/B5 Class C5/B5
Mechanische Beanspruchung nach DIN EN 13115 Mechanical loading in accordance with DIN EN 13115	Klasse 4 Class 4
Dauerfunktion nach DIN EN 12400 Durability in accordance with DIN EN 12400	Klasse 3 Class 3

\* Durchbiegungsverhalten profilabhängig  
The amount of deflection will depend on the profile

\*\* Die Angaben beschreiben die Bestwerte des Gesamtsystems.  
Die Eigenschaften einer jeweils gewählten Ausführungsvariante oder Elementkombination sind im Einzelfall anhand der ausführlichen Prüfdokumentation zu bestimmen.  
The information describes the optimum values of the entire system.The properties of a selected design option or unit combination have to be determined individually based on the comprehensive test documentation.

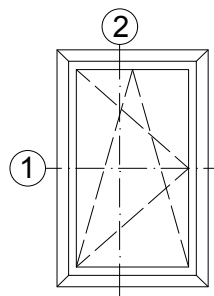
Elementbeispiele - Innen öffnend  
Unit examples - Inward-opening

AB0000298

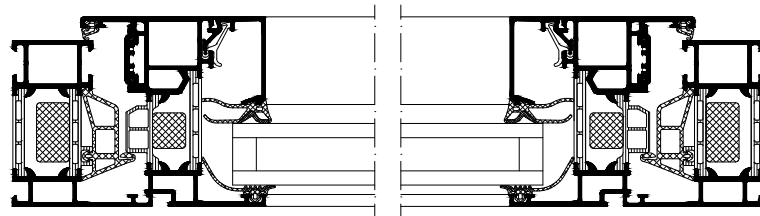
0201

Schüco AWS 70.HI

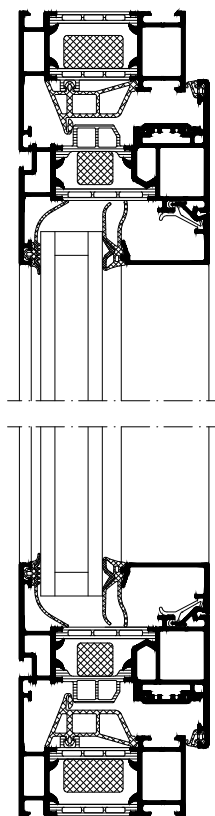
Einflügeliges Fenster  
Single-vent window



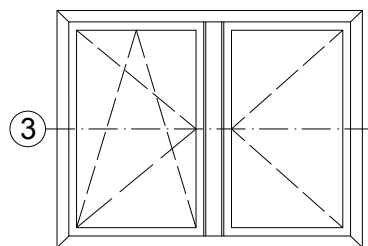
①



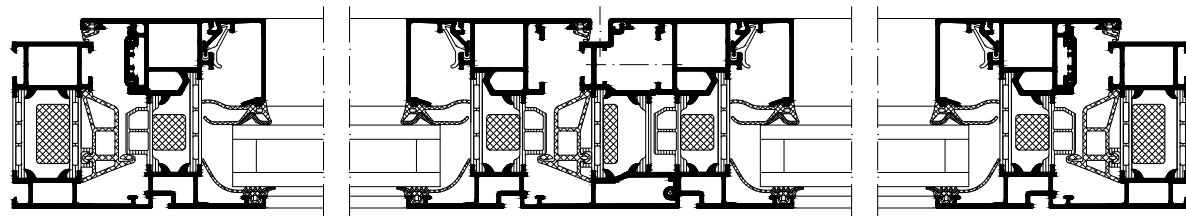
②



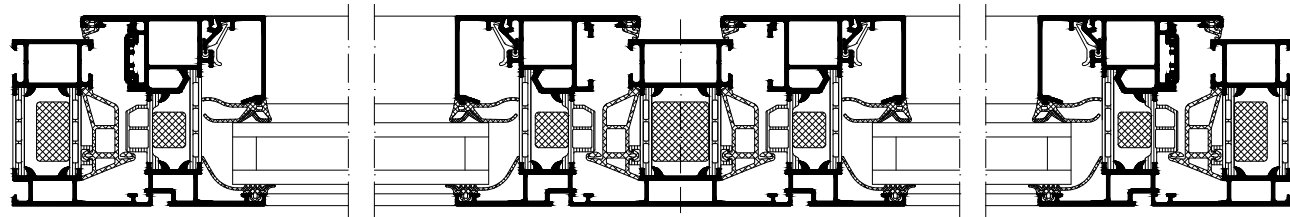
Stulpfenster  
Double-vent window



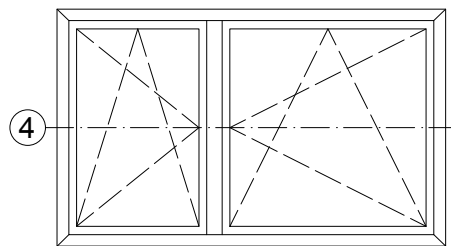
③



④



Zweiflügeliges Fenster  
Vent + vent



Elementschnitte - Innen öffnend  
Unit section details - Inward-opening

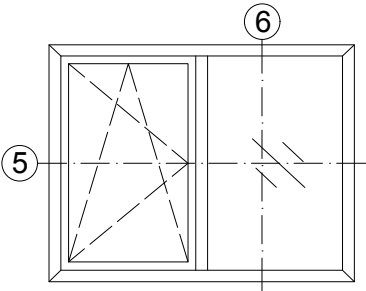
AB0000291

0201

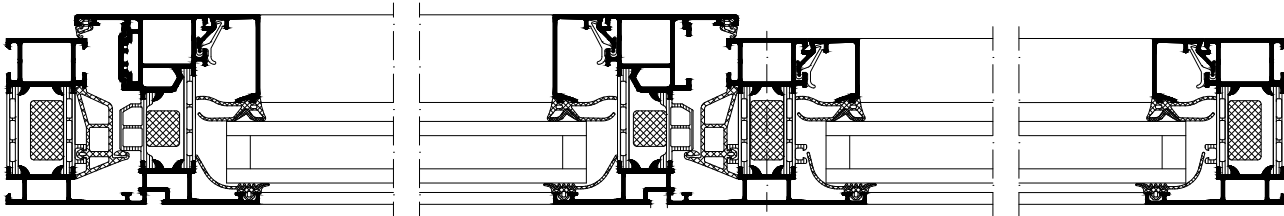
Schüco AWS 70.HI



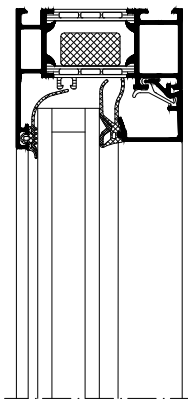
Einflügliges Fenster mit Festfeld  
Single-vent window with fixed light



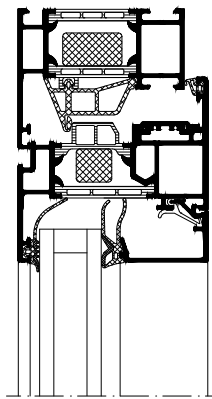
⑤



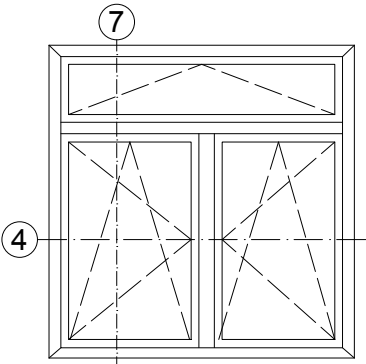
⑥



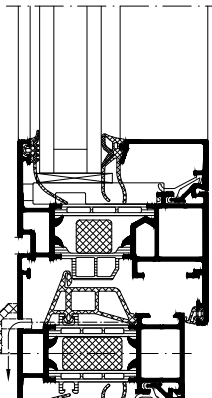
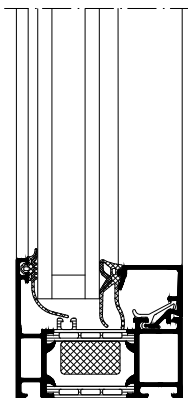
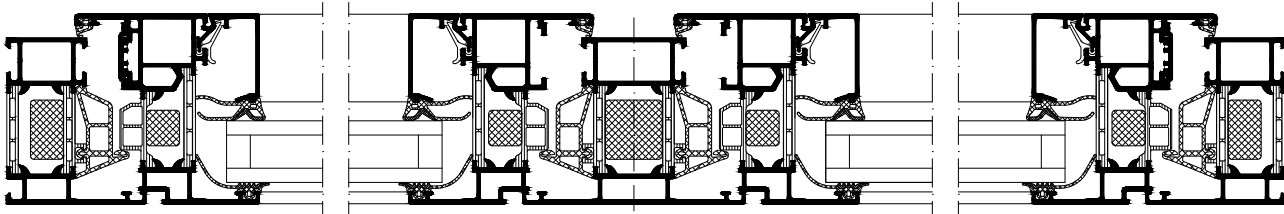
⑦



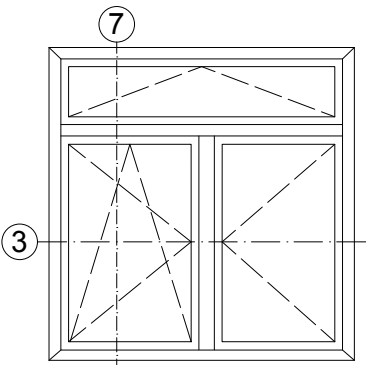
Zweiflügliges Fenster mit Oberlicht  
Vent + vent with toplight



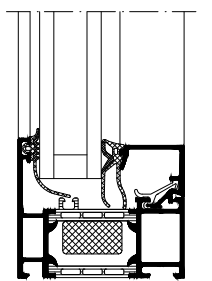
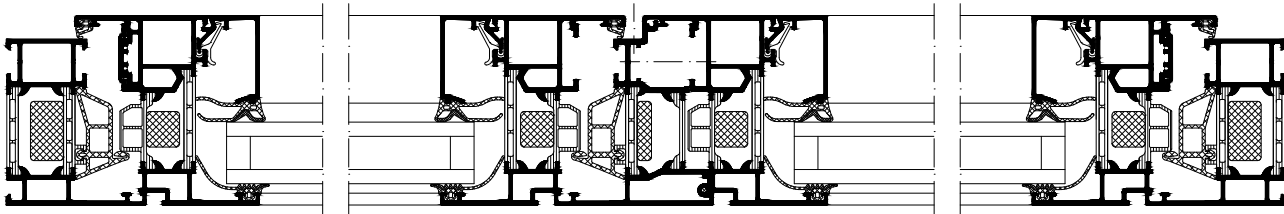
④



Stulpfenster mit Oberlicht  
Double-vent window with toplight



③



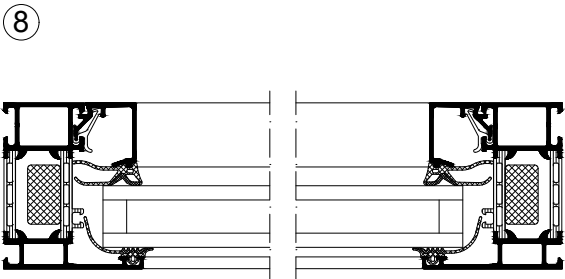
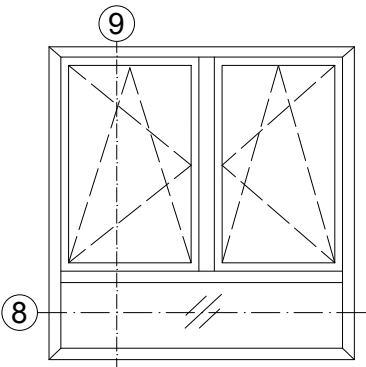
Elementschnitte - Innen öffnend  
Unit section details - Inward-opening

AB0000292

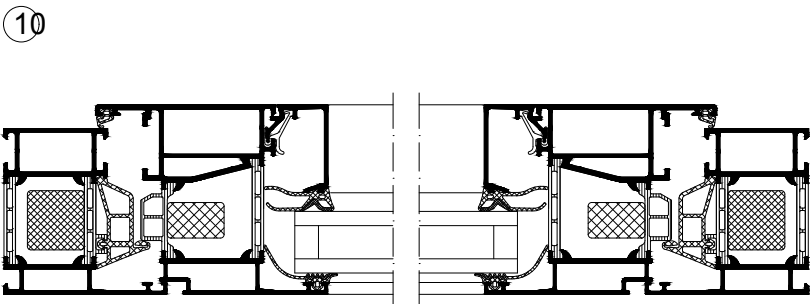
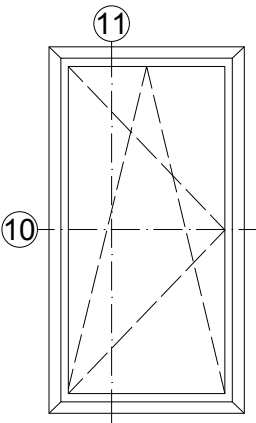
0201

Schüco AWS 70.HI

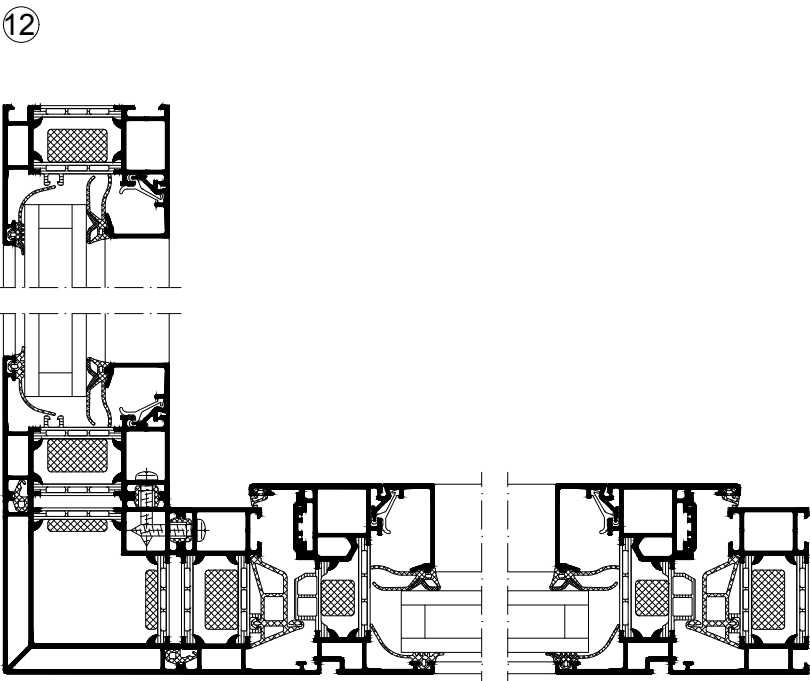
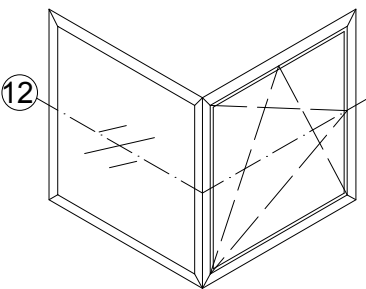
Zweiflügliges Fenster mit Unterlicht  
Vent + vent with bottom light



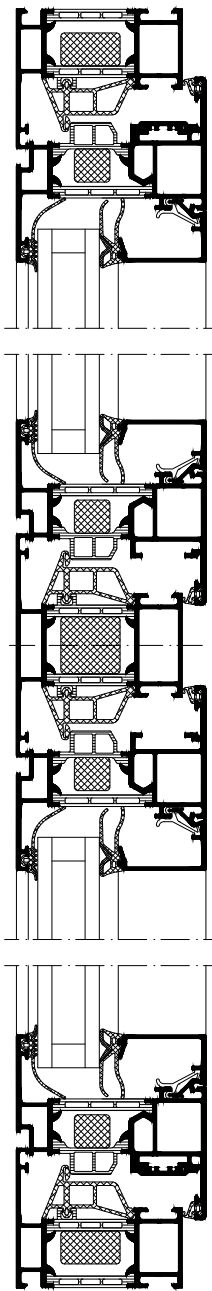
Fenstertür  
Window door



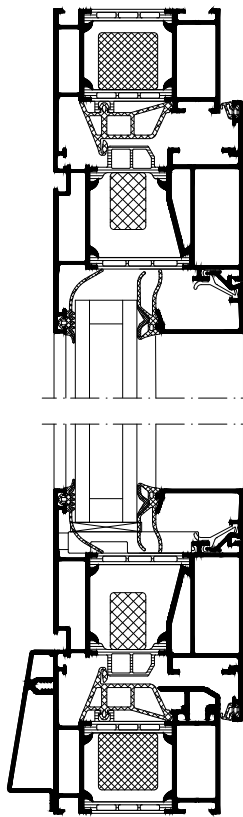
Außenecke 90°  
90° outer corner



9



11



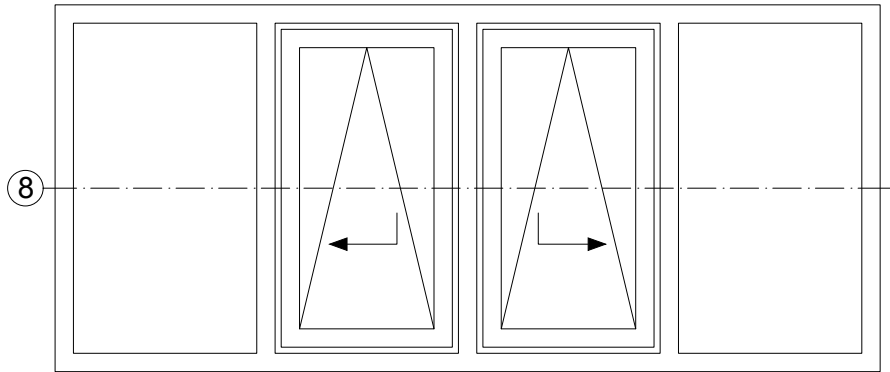
Elementschnitte - Innen öffnend  
Unit section details - Inward-opening

AB0000293

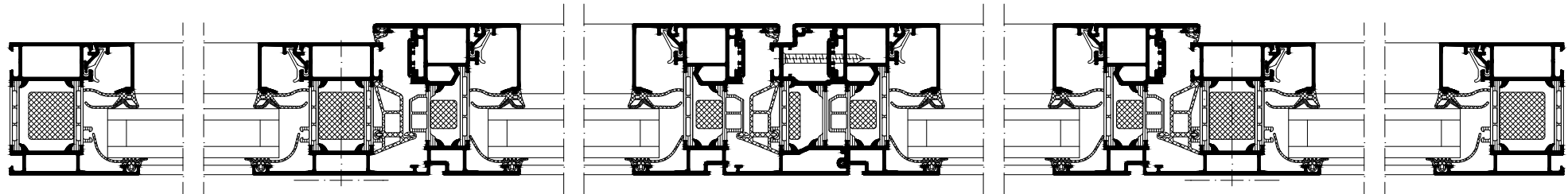
0201

Schüco AWS 70.HI

Typ 4  
Type 4



8

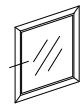


Elementschnitte - PASK  
Unit section details - Tilt/slide

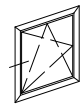
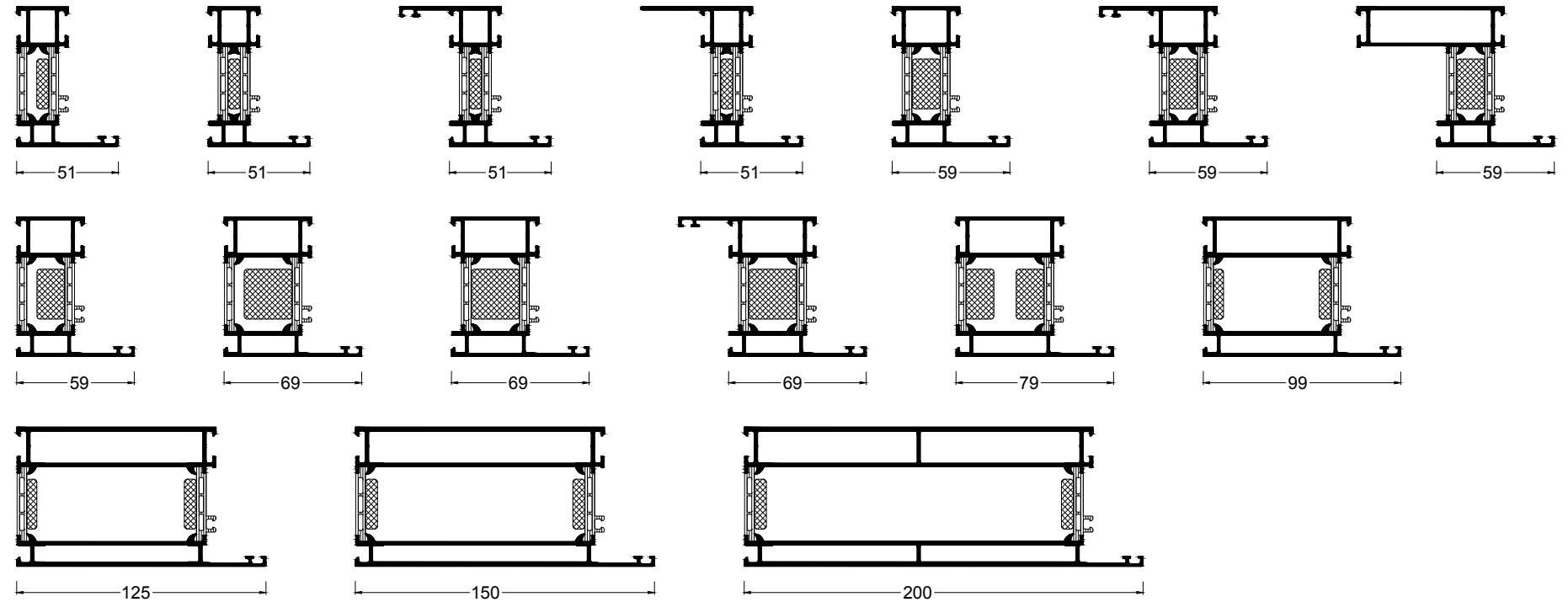
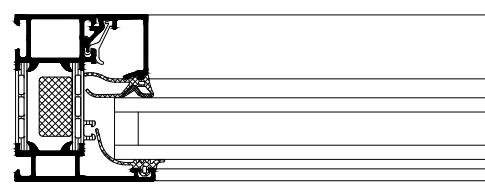
AB0000322

0100

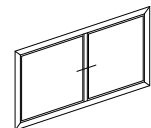
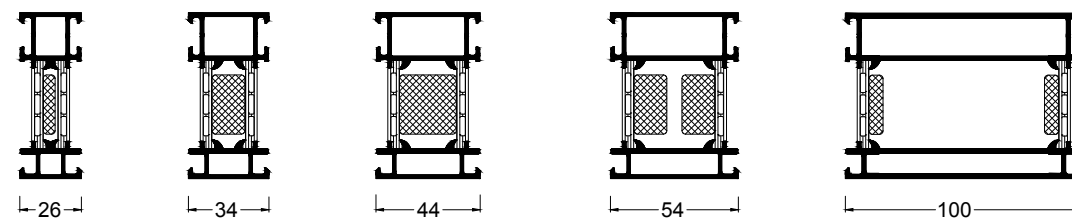
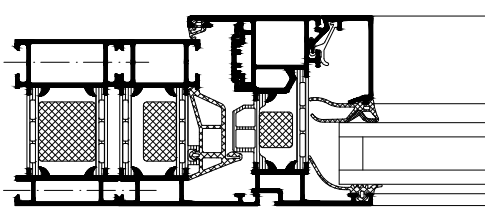
Schüco AWS 70.HI



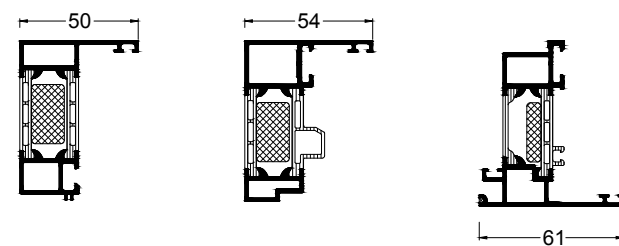
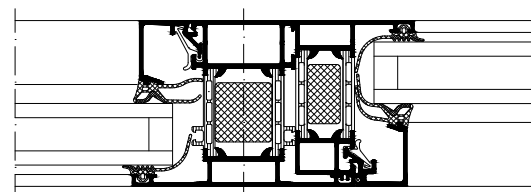
Blendrahmenprofil  
Outer frame profile



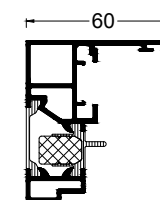
Blendrahmenverbreiterungsprofil  
Outer frame extension profile



Wechselprofil  
Reverse rebate profile



Wechselprofil Softline  
Softline reverse rebate profile

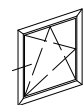


Profilsysteme - Innen öffnend  
Profile systems - Inward-opening

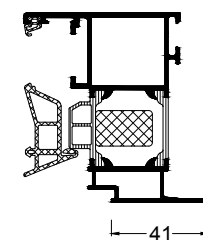
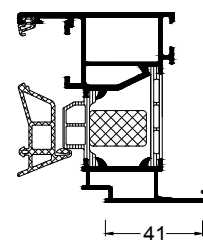
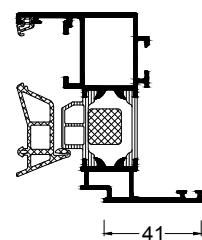
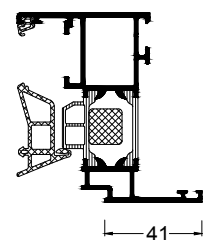
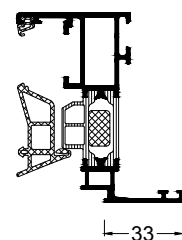
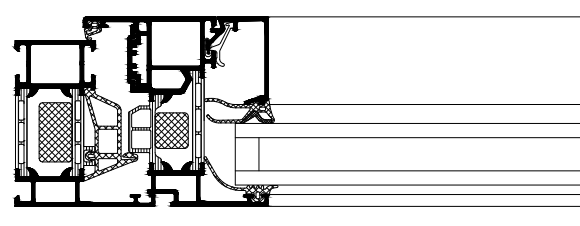
AB0000294

0201

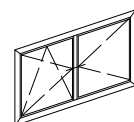
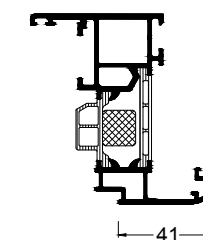
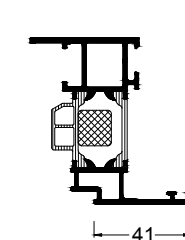
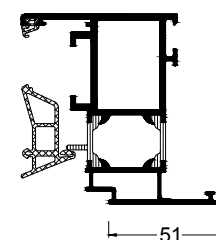
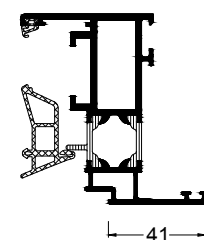
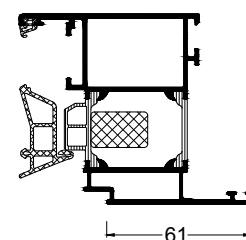
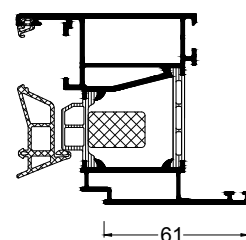
Schüco AWS 70.HI



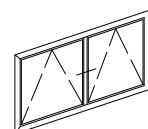
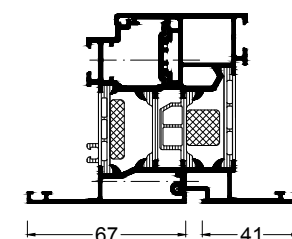
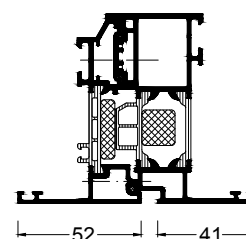
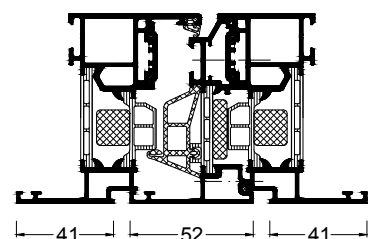
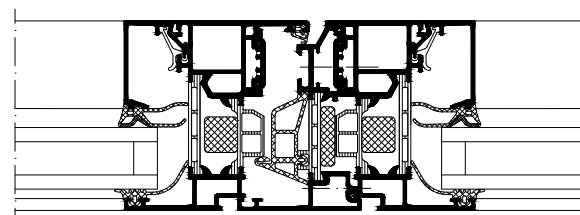
Flügelprofil  
Vent profile



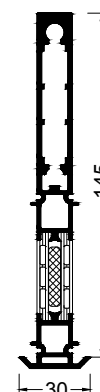
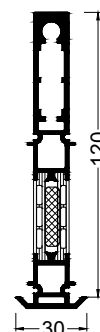
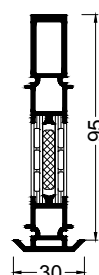
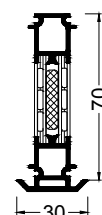
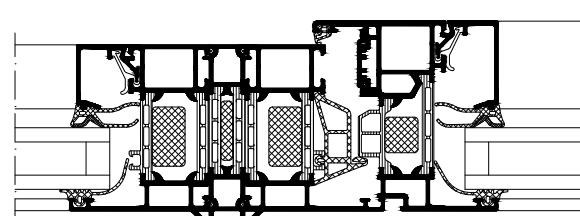
Flügel Softline  
Softline vent



Stulprofil und Stulpflügelprofil  
Double-vent profile and double-vent vent profile



Kopplungspfofen  
Coupling mullion

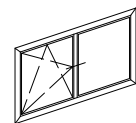


Profilsysteme - Innen öffnend  
Profile systems - Inward-opening

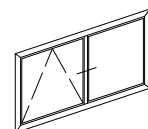
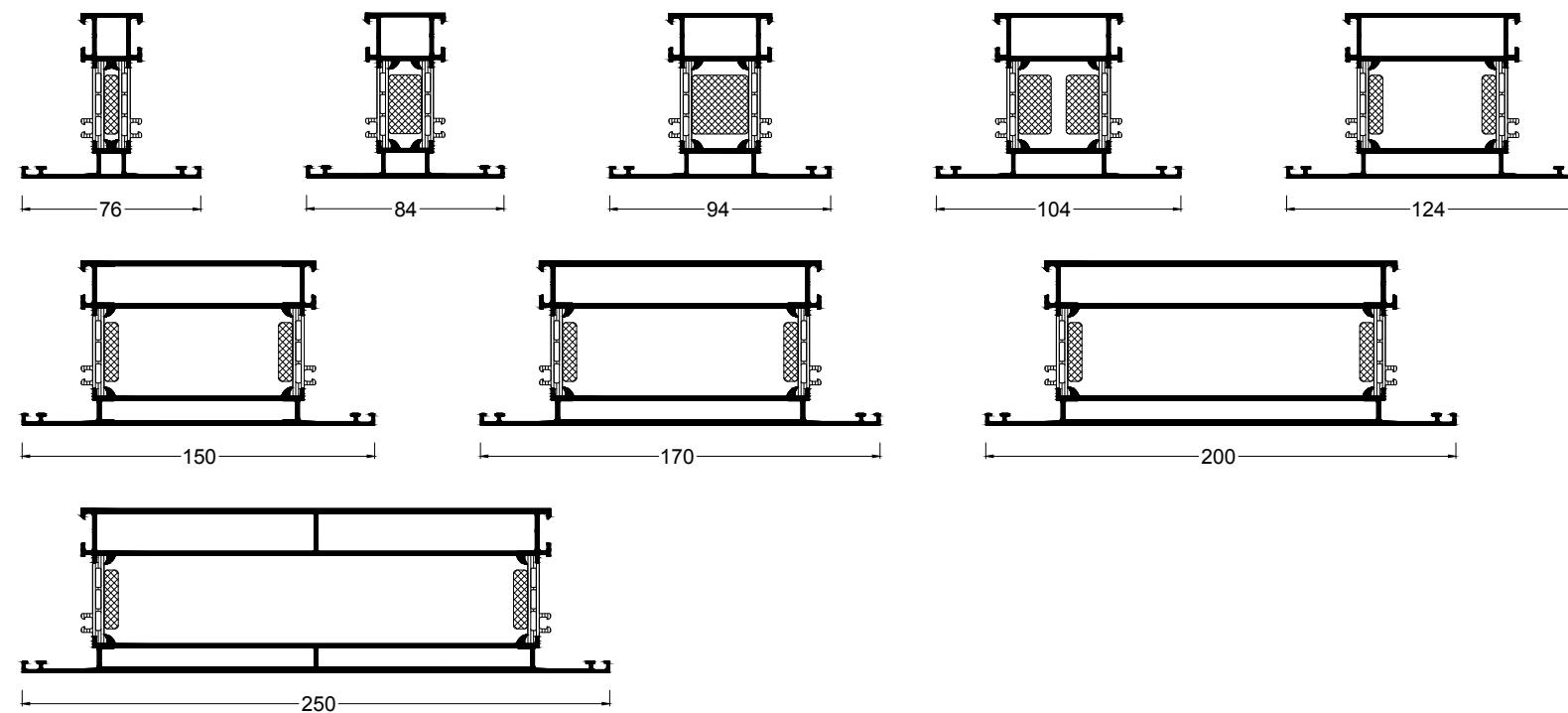
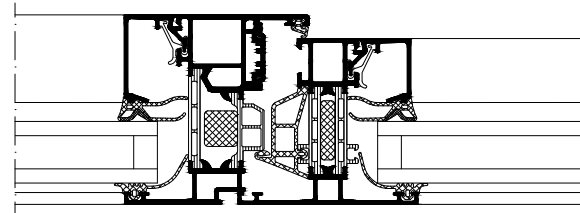
AB0000295

0201

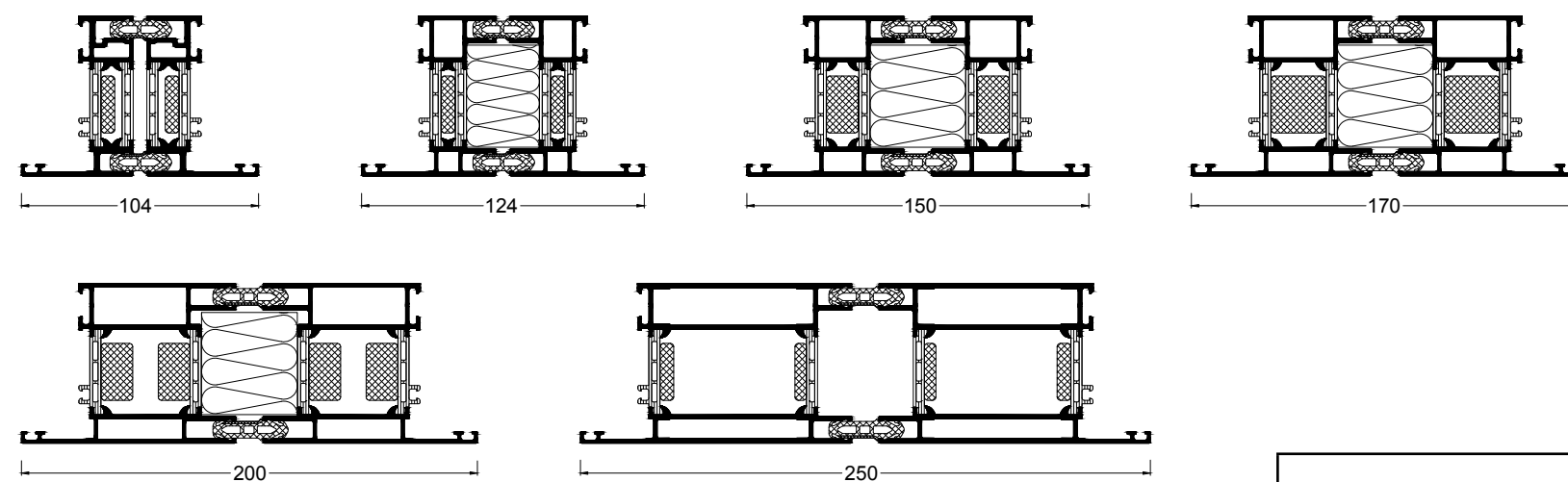
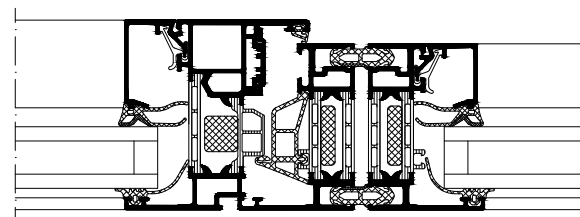
Schüco AWS 70.HI



Riegel / Pfosten  
Transom/mullion



Dehnungs- und Montagestoß  
Expansion and assembly joint

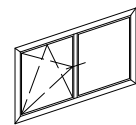


Profilsysteme - Innen öffnend  
Profile systems - Inward-opening

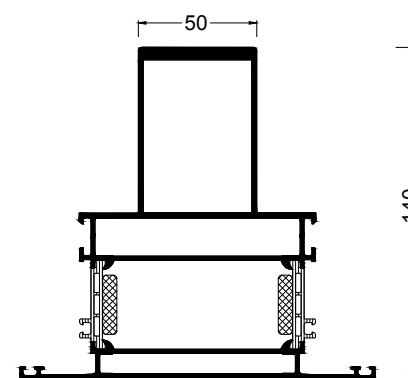
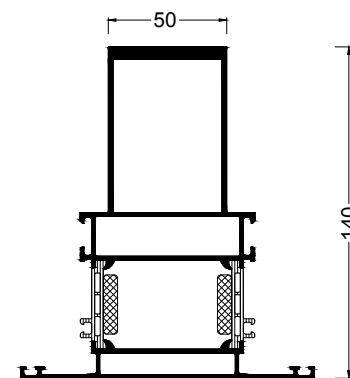
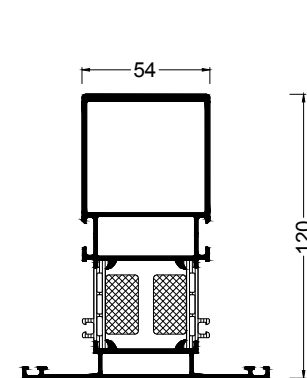
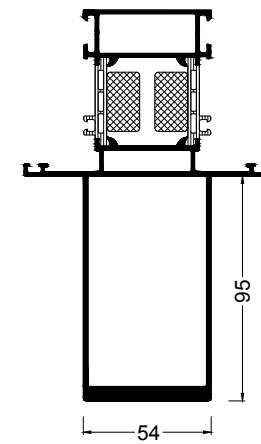
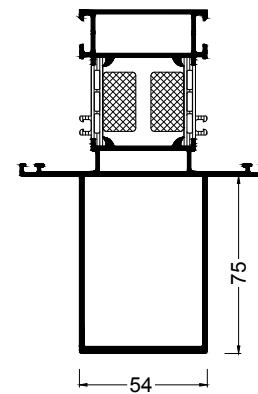
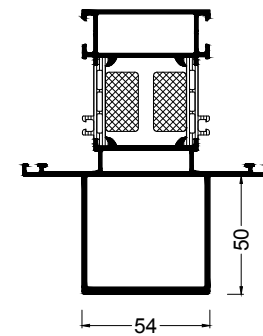
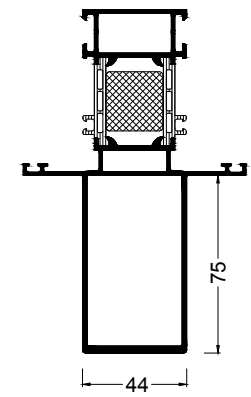
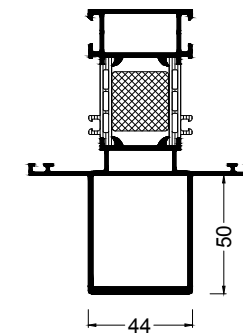
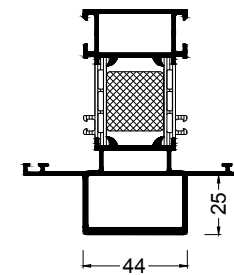
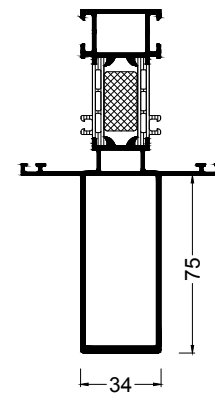
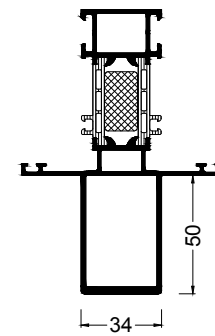
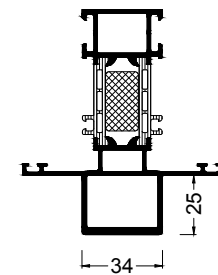
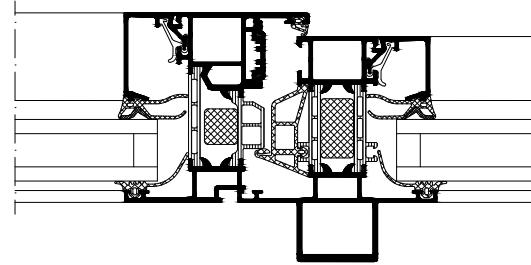
Schüco AWS 70.HI

AB0000296

0201



Statikpfosten  
Structural mullion



Profilsysteme - Innen öffnend  
Profile systems - Inward-opening

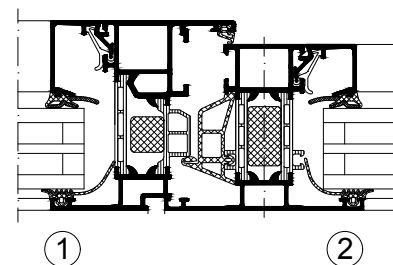
AB0000297

0201

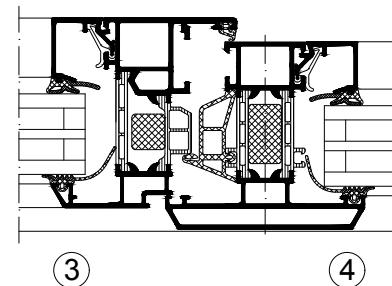
Schüco AWS 70.HI



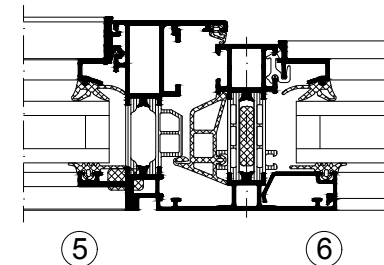
AWS 70.HI  
AWS 70.HI



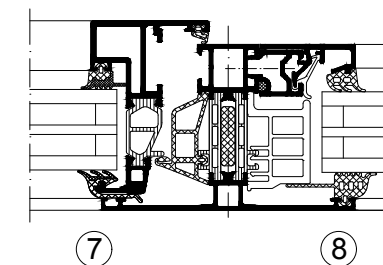
AWS 70 RL.HI  
AWS 70 RL.HI



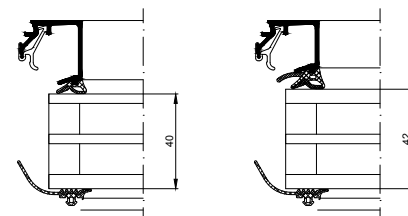
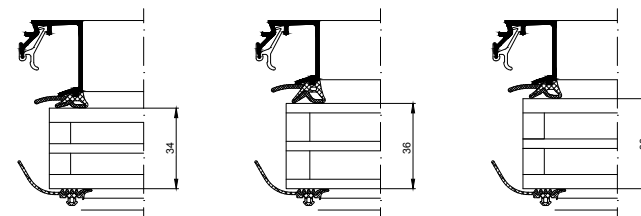
AWS 70 ST.HI  
AWS 70 ST.HI



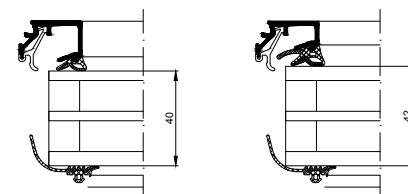
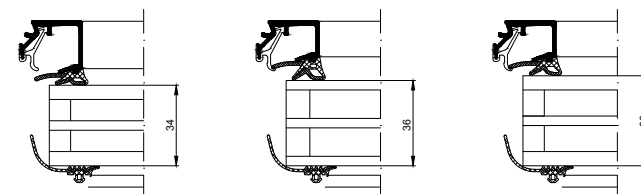
AWS 70 BS.HI  
AWS 70 BS.HI



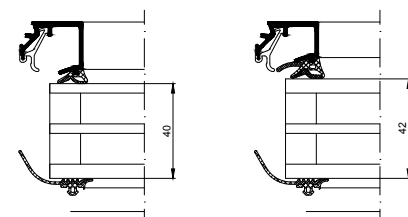
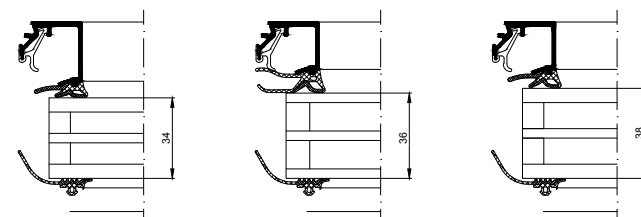
- ① \* 3-fach Verglasung - Flügel - AWS 70.HI  
Triple glazing - vent - AWS 70.HI



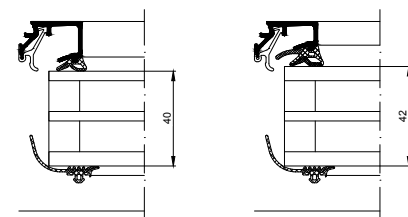
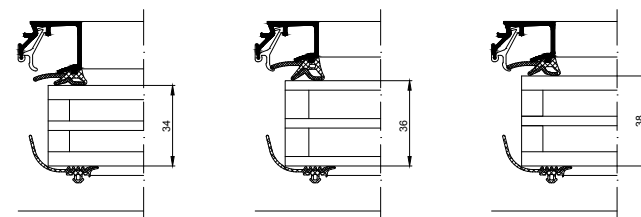
- ② \* 3-fach Verglasung - Pfosten / Blendrahmen - AWS 70.HI  
Triple glazing - mullion / outer frame - AWS 70.HI



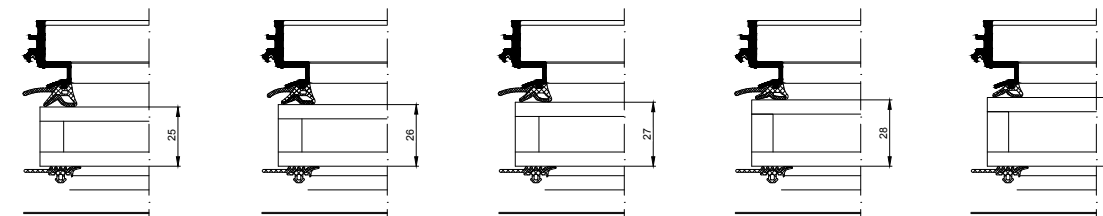
- ③ \* 3-fach Verglasung - Flügel - AWS 70 RL.HI  
Triple glazing - vent - AWS 70 RL.HI



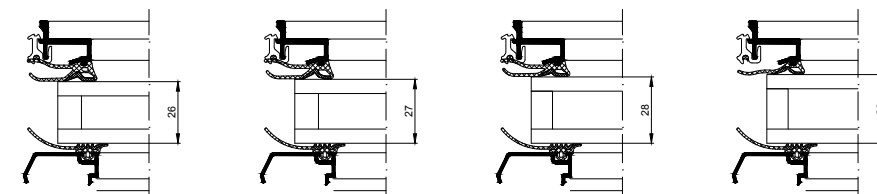
- ④ \* 3-fach Verglasung - Pfosten / Blendrahmen - AWS 70 RL.HI  
Triple glazing - mullion / outer frame - AWS 70 RL.HI



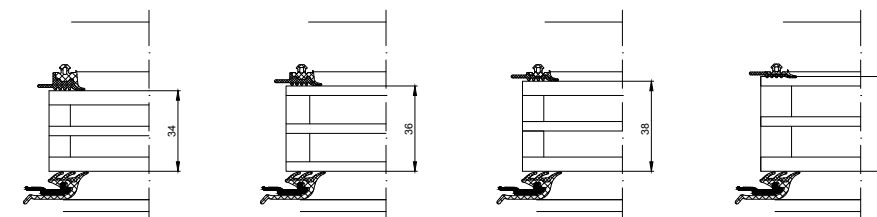
- ⑤ 2-fach Verglasung - Flügel - AWS 70 ST.HI  
Double glazing - vent - AWS 70 ST.HI



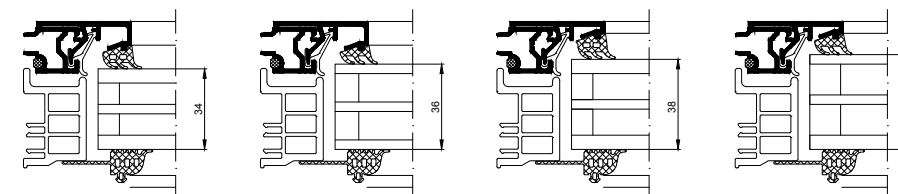
- ⑥ 2-fach Verglasung - Pfosten / Blendrahmen - AWS 70 ST.HI  
Double glazing - mullion / outer frame - AWS 70 ST.HI



- ⑦ 3-fach Verglasung - Pfosten / Blendrahmen - AWS 70 BS.HI  
Triple glazing - mullion / outer frame - AWS 70 BS.HI



- ⑧ 3-fach Verglasung - Pfosten / Blendrahmen - AWS 70 BS.HI  
Triple glazing - mullion / outer frame - AWS 70 BS.HI



- \* Alternative Glasleisten - Gestaltungsleisten  
\* Alternative glazing beads - feature glazing beads



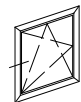
Profilsysteme - Verglasung  
Profile systems - Glazing

AB0000299

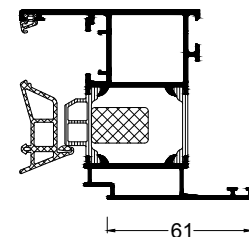
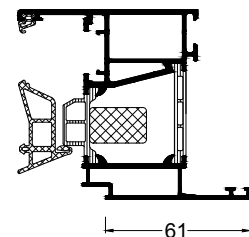
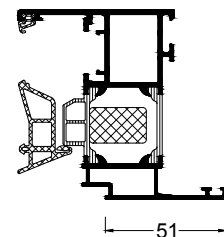
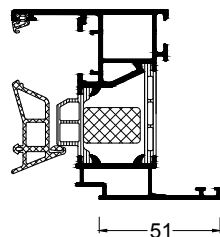
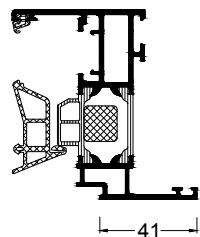
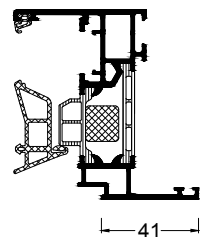
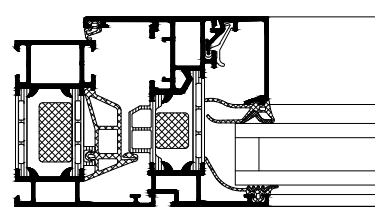
0302

Schüco AWS 70.HI





Flügelprofil TipTronic  
TipTronic vent profile



Profilsysteme - Innen öffnend  
- TipTronic  
Profile systems - Inward-opening  
- TipTronic

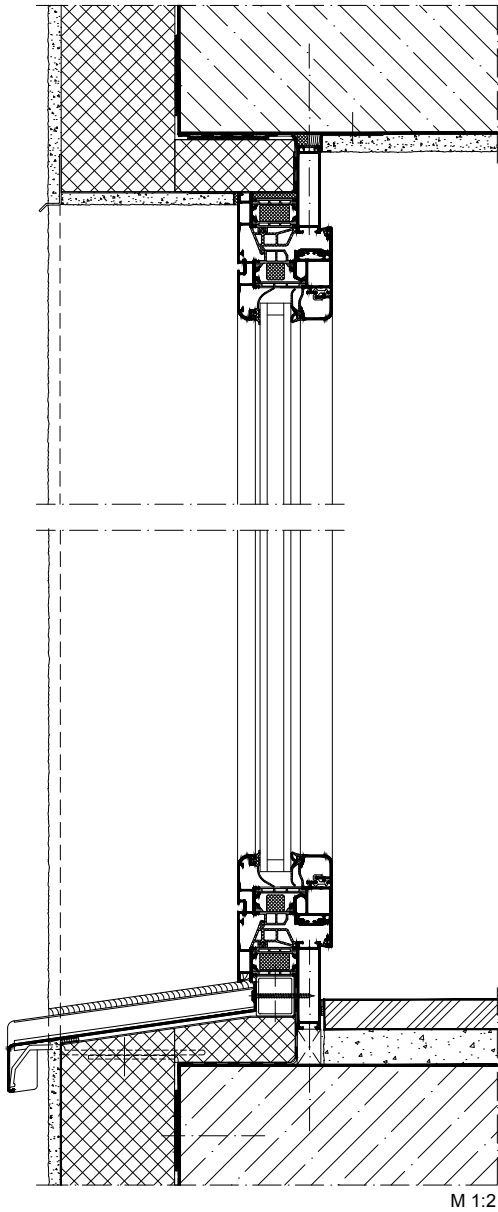
AB0000300

0201

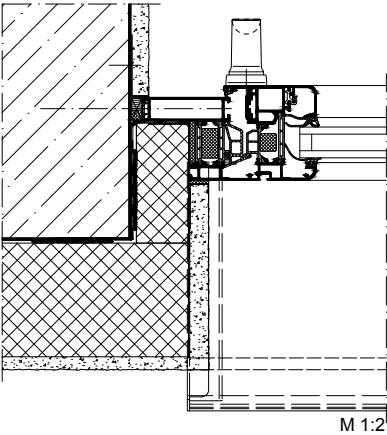
Schüco AWS 70.HI

Wand mit WDVS  
Wall with composite thermal insulation system

Oberer Anschluss  
Top attachment



Seitlicher Anschluss  
Side attachment

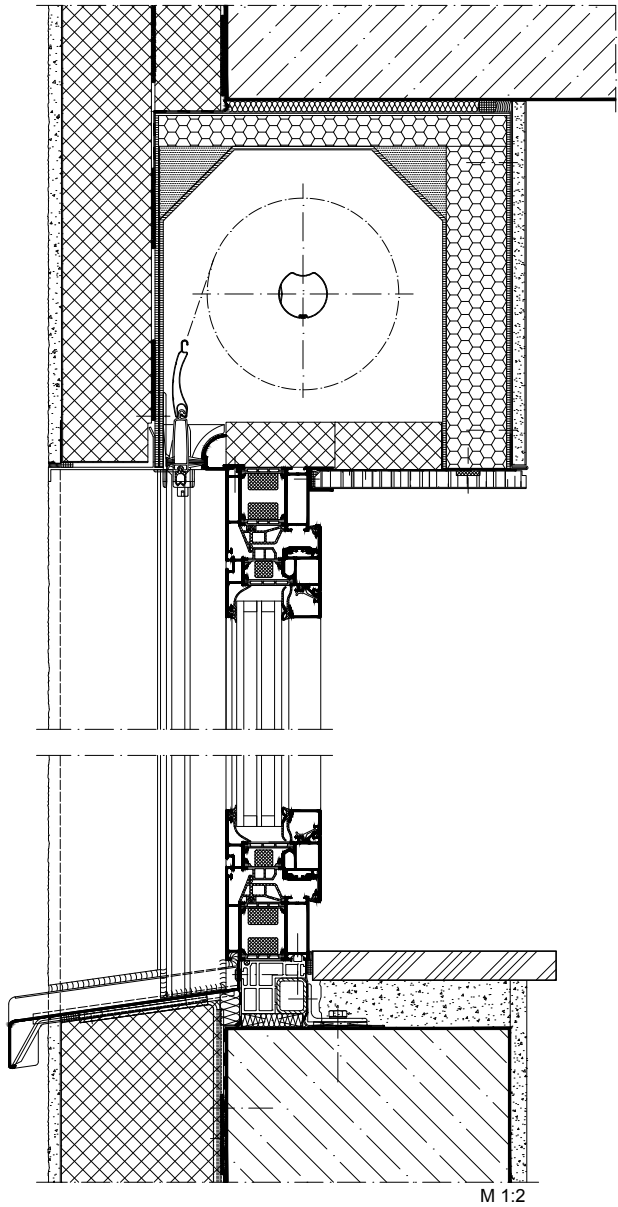


Unterer Anschluss  
Bottom attachment

Baukörperanschlüsse - Innen öffnend Attachments to building structure - Inward-opening	AB0000301
	0302
Schüco AWS 70.HI	

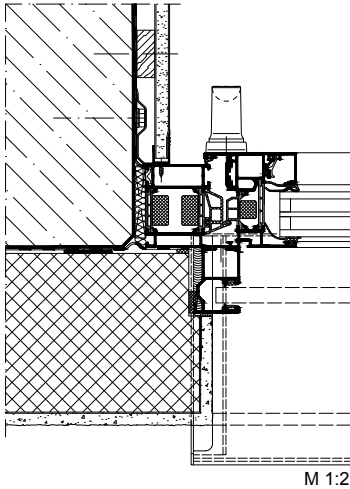
Wand mit WDVS - mit vorgesetztem Rolladenkasten  
Wall with composite thermal insulation system - with façade-mounted roller shutter box

Oberer Anschluss  
Top attachment



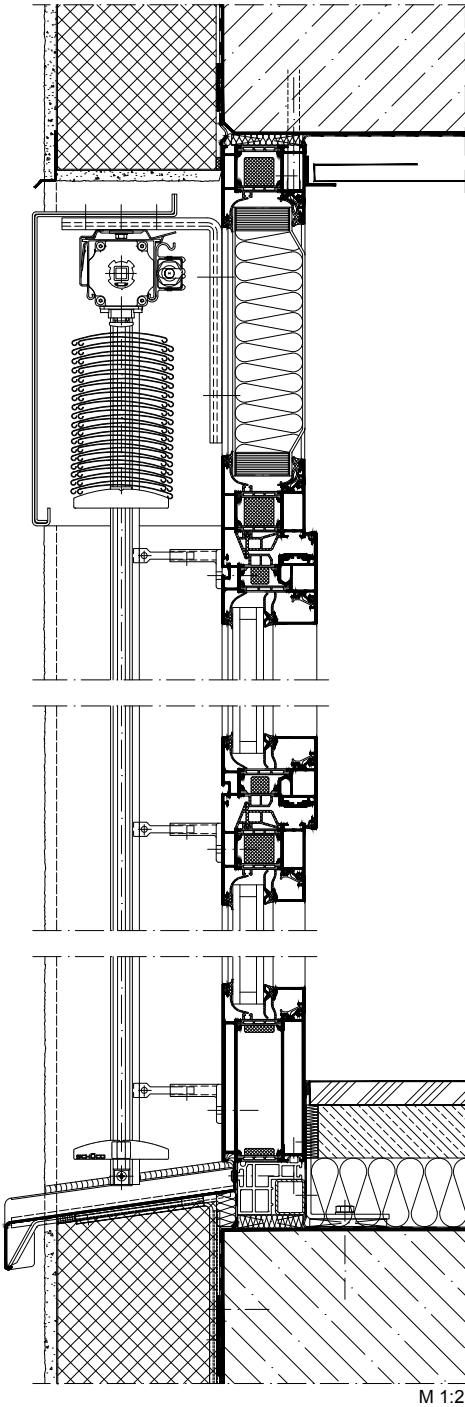
Unterer Anschluss  
Bottom attachment

Seitlicher Anschluss  
Side attachment

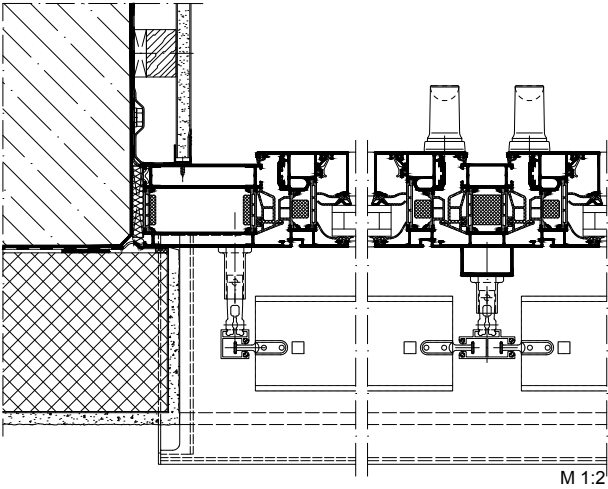


Wand mit WDVS und Sonnenschutz  
Wall with composite thermal insulation system and sun shading

Oberer Anschluss  
Top attachment



Seitlicher Anschluss  
Side attachment



Unterer Anschluss  
Bottom attachment

Baukörperanschlüsse  
- Innen öffnend  
Attachments to building structure  
- Inward-opening

AB0000302

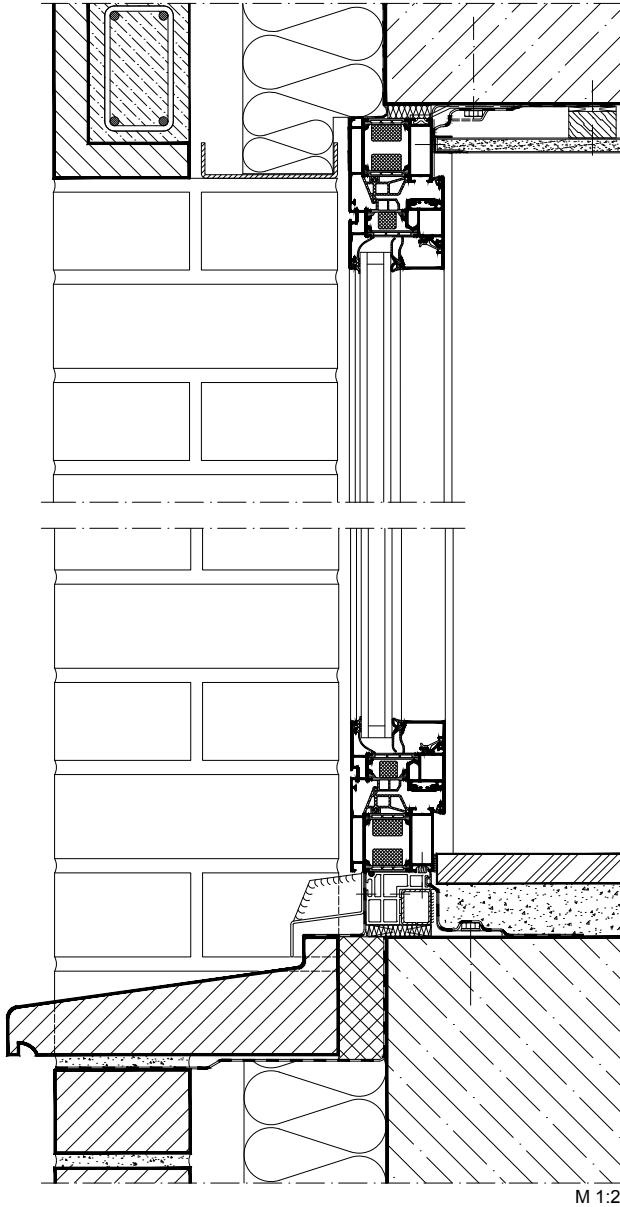
0201

Schüco AWS 70.HI

Zweischaliges Mauerwerk  
Double-skin masonry

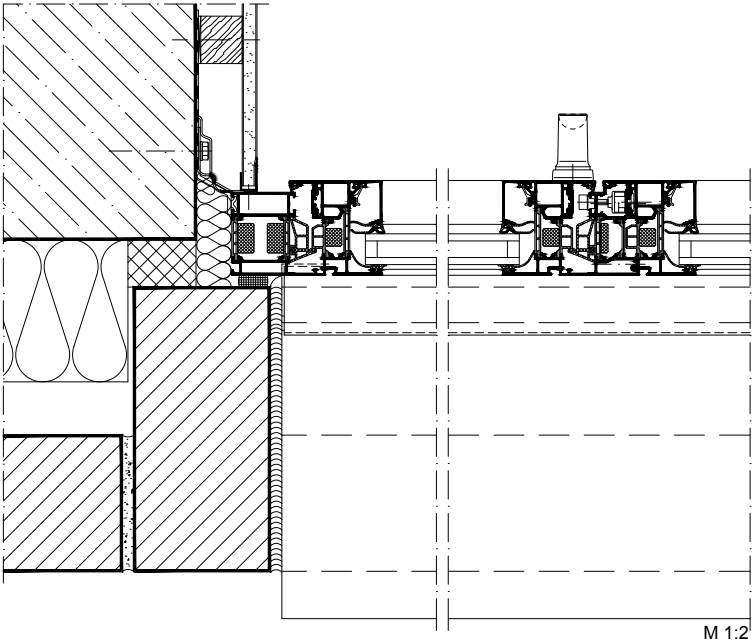
Oberer Anschluss  
Top attachment

Bauseitige Sperrfolie oberhalb des Sturzes berücksichtigen !  
Take on-site barrier film above the lintel into consideration.



Unterer Anschluss  
Bottom attachment

Seitlicher Anschluss  
Side attachment



Baukörperanschlüsse  
- Innen öffnend  
Attachments to building structure  
- Inward-opening

AB0000303

0201

Schüco AWS 70.HI